

© MASCHINE



NATIVE INSTRUMENTS

THE FUTURE OF SOUND

The information in this document is subject to change without notice and does not represent a commitment on the part of Native Instruments GmbH. The software described by this document is subject to a License Agreement and may not be copied to other media. No part of this publication may be copied, reproduced or otherwise transmitted or recorded, for any purpose, without prior written permission by Native Instruments GmbH, hereinafter referred to as Native Instruments.

“Native Instruments”, “NI” and associated logos are (registered) trademarks of Native Instruments GmbH.

Mac, Mac OS, GarageBand, Logic, iTunes and iPod are registered trademarks of Apple Inc., registered in the U.S. and other countries.

Windows, Windows Vista and DirectSound are registered trademarks of Microsoft Corporation in the United States and/or other countries.

All other trademarks are the property of their respective owners and use of them does not imply any affiliation with or endorsement by them.

Please note: The presets are delivered for demonstrational purposes, and "as is". Native Instruments cannot take over any warranty, and reserves the right to stop maintaining the presets. Native Instruments is not obliged to update them or to provide bug fixes or further presets in the future.

Document authored by: Steffen Dierolf, David Gover

Software version: 2.6 (02/2017)

NATIVE INSTRUMENTS GmbH

Schlesische Str. 29-30
D-10997 Berlin
Germany
www.native-instruments.de

NATIVE INSTRUMENTS North America, Inc.

6725 Sunset Boulevard
5th Floor
Los Angeles, CA 90028
USA
www.native-instruments.com

NATIVE INSTRUMENTS K.K.

YO Building 3F
Jingumae 6-7-15, Shibuya-ku,
Tokyo 150-0001
Japan
www.native-instruments.co.jp

NATIVE INSTRUMENTS UK Limited

18 Phipp Street
London EC2A 4NU
UK
www.native-instruments.co.uk



© NATIVE INSTRUMENTS GmbH, 2017. All rights reserved.

1 Installing MIDI CC Macro Presets

This document provides instructions on how to install MASCHINE MIDI Control Change Macro presets.

What are MIDI CC Macro Presets?

MIDI Control Change Macros allow you to define a set of macros in MASCHINE that can be used to control and modulate parameters on external MIDI devices using your MASCHINE software or hardware.

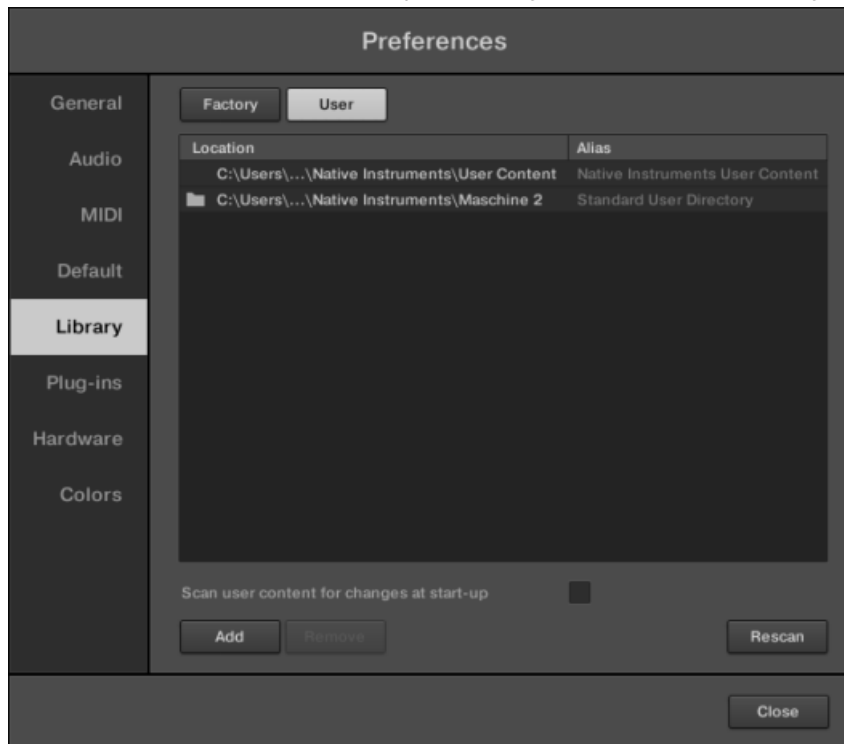
To save you the time of creating sets of Macro controller we have created a few readymade presets for popular devices which can be installed on your computer. Once installed the Macro presets appear in the Sound and Group categories of your MASCHINE Browser and can easily be used as part of your workflow. It is also possible to edit these presets or create new ones.

Installing the Presets

To install the MIDI CC Macro presets in MASCHINE:

1. Unzip the downloaded file named "MIDIPresetsForExternalDevices" and move the folder to any desired location on your computer.
2. Click *File > Preference...* in the MASCHINE software to open the [Preferences](#) panel.
3. Click the [Library](#) tab on the left and then click the [User](#) button at the top of the panel.

4. Click the [Add](#) button to add the presets to your MASCHINE Library.



5. Find the folder "MIDIPresetsForExternalDevices" in the location where you saved it and click [OK](#).
- ⇒ You can now see a new entry in the User Library list.
6. Click [Close](#) to exit the Preferences panel.
- In the MASCHINE Browser you can now find new [TYPES](#) within Groups and Sounds categories for your external MIDI devices.



For information on creating MIDI CC Macro presets refer to the MASCHINE Manual available from the *Help* menu.