

GUITAR RIG SESSION SETUP GUIDE

Please use the “Guitar Rig 3” installer to install the GUITAR RIG 3 XE software and the NI USB Audio hardware driver on your computer. Please connect the SESSION I/O interface to a USB 2.0 socket on your computer when asked during installation.

1

Connect your guitar or bass to the instrument input 1 of the SESSION I/O interface. Make sure the Line/Instrument switch is set to **Instrument**.

To use a microphone, connect it to the XLR input. Please refer to the SESSION I/O manual for more information. You will find the manual in the “Guitar Rig 3” application folder on your Mac and in the “Session IO” folder on your PC.



2

Connect your power amplifier, mixer or active speakers to the output 1/2 jacks on the back of the SESSION I/O.

NOTE: Please take notice of the output 1/2 level (volume) settings when doing this!

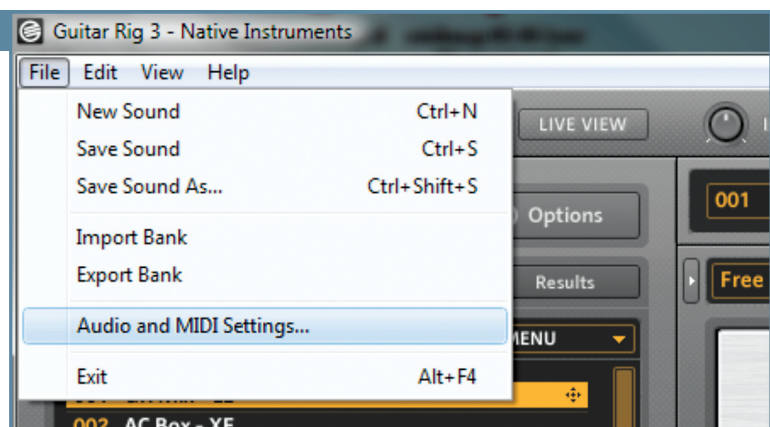


3

Start your GUITAR RIG 3 XE software.

4

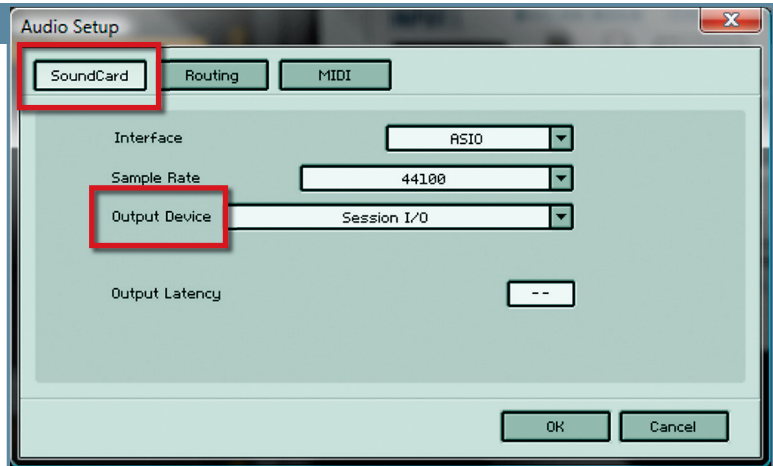
In GUITAR RIG 3 XE, go to **Audio and MIDI Settings** (PC) or **Preferences** (Mac®).



GUITAR RIG SESSION SETUP GUIDE

5

Click on **SoundCard** and select **Session I/O** as the output device. Please make sure **Interface** is set to **CoreAudio™** (Mac®) and **ASIO™** (PC) respectively.



6

Confirm your selection with a click on **OK**.

7

Increase the gain for input 1 to get a proper input signal in the software (the green LED on top of the interface indicates an incoming signal, the red LED indicates overload).



8

Load a GUITAR RIG 3 XE preset and have fun!

ADDITIONAL NOTES

If you plan to use your guitar amp in conjunction with the SESSION I/O, simply connect either one of the outputs of the SESSION I/O audio interface to your amp to run a “mono” setup. To get a true stereo setup, connect both SESSION I/O outputs to your amp.

If you experience ground loops or noise, a DI box between the SESSION I/O and your amp can help to alleviate this problem. Please check our Knowledge Base for further info on this topic.