



SESSION BASSIST

---

# ICON BASS



THE FUTURE OF SOUND

# Table of Contents

<b>1. Disclaimer</b>	<b>1</b>
<b>2. Welcome to ICON BASS</b>	<b>2</b>
Document Conventions	3
<b>3. Installation and Setup</b>	<b>4</b>
Installing via Native Access	4
Loading ICON BASS in KONTAKT	4
<b>4. About SESSION BASSIST - ICON BASS</b>	<b>5</b>
<b>5. Using ICON BASS</b>	<b>6</b>
Playing Melodies	6
Combining Melodies and Patterns	8
Pattern Selection and Playback	9
Loop and Single Note Pattern Types	9
Phrase and One Pitch Mode, MIDI Drag and Drop	10
Playing Dead Notes, Endings and Slides	11
Controlling the Dynamics of the Performance	12
Loading and Saving Sound Presets	12
Locking Parameters When Loading Snapshots or Songs	13
Resetting the Round Robin Counter	13
Defining the Downbeat after Signature Changes	13
Further MIDI Controllers	14
<b>6. Navigating ICON BASS</b>	<b>16</b>
The Pattern Inspector	16
The Song Browser	17
The Pattern Browser	18
The Bass Settings Page	21
The Amps & FX Page	22
The Playback Page	24
<b>7. Tips and Tricks</b>	<b>27</b>
Use the Melody Instrument to enhance the Pattern Playback	27
Create Natural Transitions	27
Combine Patterns Creatively	28
Create Custom Groove Variations	28
Use Authentic Humanization	28
Use the Impact Slider as a Drama Controller	29
<b>8. Credits</b>	<b>30</b>

# 1. Disclaimer

The information in this document is subject to change without notice and does not represent a commitment on the part of Native Instruments GmbH. The software described by this document is subject to a License Agreement and may not be copied to other media. No part of this publication may be copied, reproduced or otherwise transmitted or recorded, for any purpose, without prior written permission by Native Instruments GmbH, hereinafter referred to as Native Instruments.

“Native Instruments”, “NI” and associated logos are (registered) trademarks of Native Instruments GmbH.

Mac, macOS, GarageBand, Logic and iTunes are registered trademarks of Apple Inc., registered in the U.S. and other countries.

Windows and DirectSound are registered trademarks of Microsoft Corporation in the United States and/or other countries.

All other trademarks are the property of their respective owners and use of them does not imply any affiliation with or endorsement by them.

Document authored by Daniel Scholz, Samuel Dalferth

Software version: 1.0 (04/2023)

## 2. Welcome to ICON BASS

Thank you for purchasing SESSION BASSIST - ICON BASS, a classic bass sample library powered by KONTAKT. This document will provide you with instructions and advice on how to use the library, as well as additional information.

We hope that you will be truly inspired by using ICON BASS.





# Document Conventions


In this document the following formatting is used to highlight useful information:

<i>Italics</i>	Indicates paths to locations on your hard disk or other storage devices
<b>Bold</b>	Highlights important names, concepts, and software interface elements.
[Brackets]	References keys on a computer’s keyboard
►	Single item instructions are represented by a bullet icon.
→	Results in procedures are represented by an arrow icon.

The following three icons represent different types of information:

 The **light bulb** icon indicates a useful tip, suggestion, or interesting fact.

 The **information** icon highlights important information that is essential for the given context.

 The **warning** icon alerts you of serious issues and potential risks that require your full attention.

## 3. Installation and Setup

Before making music with ICON BASS, you must install and set up the necessary software. Follow these instructions to get started.

### Installing via Native Access

Native Access is where you will install the software for ICON BASS. If you are new to Native Instruments, you will first have to create your Native ID. To learn more about Native Access, visit our [support page](#).

1. Download and install Native Access [here](#).
2. Create a Native ID if you do not yet have one.
3. Login to Native Access using your Native ID.
4. Click the **Not installed** tab.
5. Click **INSTALL** for the following products:
  - ICON BASS
  - KONTAKT or KONTAKT PLAYER

→ The software is installed automatically.

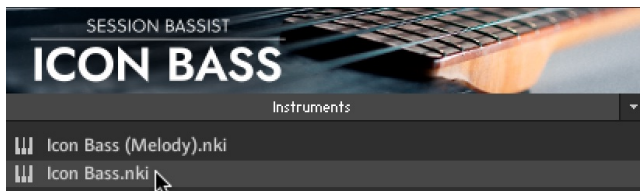


If the software is already installed, click the **Available updates** tab and check for new updates before proceeding.

### Loading ICON BASS in KONTAKT

Once installed, you can start using ICON BASS in KONTAKT. ICON BASS is not an independent plug-in, so you first need to open an instance of KONTAKT or KONTAKT PLAYER:

1. Open KONTAKT as a plug-in in your host software (DAW) or as a stand-alone application.
2. Locate ICON BASS in the Browser, on the left side of the user interface.
3. Click **Instruments** to open the product's content.
4. Double-click the **Icon Bass.nki** file to load the instrument.



If you are new to KONTAKT and want more information, visit [KONTAKT PLAYER](#) and [KONTAKT](#).



## 4. About SESSION BASSIST - ICON BASS

ICON BASS combines a pattern-based bass library with a sophisticated multisample set, designed to deliver authentic-sounding bass lines, patterns, and riffs for songwriting and music production. Its samples originate from a legendary 1989 electric solid-body bass guitar with active electronics. The instrument's active, 9V powered DI signal was recorded through the DI input of a vintage Universal Audio M-610 preamp. In addition to the pickup signal, two vintage dynamic microphones were used: The first was an AEA r84 ribbon mic pointing towards the picking hand of the player and then running through a Neve 1073 preamp. 2. The second was an Avantone CV-28 small diaphragm tube condenser mic pointing towards the headstock, running through the 2nd channel of the Neve 1073 preamp, then through an Empirical Labs EL8-X Distressor in Opto Mode. Both mic signals have been precisely phase-aligned and summed with a Phoenix Audio Nicerizer Jr. Summing Mixer.

The signals were converted by the SPL Madison analog-to-digital converter and fed into an RME MADIface XT via MADI, both externally clocked by an Antelope Audio 10MX Rubidium atomic clock.

A total of 208 loop patterns, single notes in many different articulations, round robin variants and velocities in multiple fret positions over the range of three octaves, and additional sample content were performed live by professional bassist Jakob Winterstein. The loops and phrases are grouped into 54 song presets, containing four to six patterns each, as well as a matching sound preset. You can select patterns via keyswitches and play them on your MIDI keyboard. Playback will always stay in sync with your host project. Phrases can also be dragged and dropped into the DAW for MIDI editing.

Regarding sound options, ICON BASS offers an authentic emulation of the real instrument's active 2-band boost EQ, providing both low-end punch and high-end clarity. Furthermore, the mic signal features an additional tone control and a built-in effects chain for further processing. An expanded selection of integrated effects and a carefully curated sound preset library provides for a truly versatile collection of sounds, suitable for a wide range of musical styles.

The key feature of ICON BASS is its revolutionary playback engine. You can seamlessly switch between different patterns, and also alter the dynamics in real-time, thus creating true-to-life musical performances. Because all the nuances of the original performance, such as exact timing and dynamics, have been preserved, you will notice that the instrument feels very natural and organic. All of the integrated patterns can be played over a wide tempo range in outstanding sound quality.

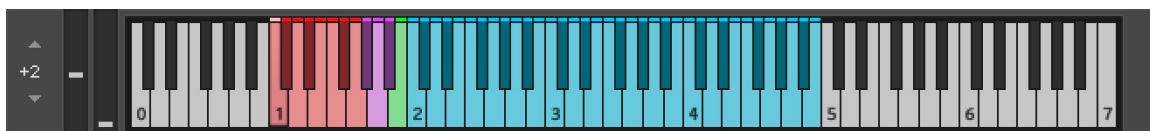
## 5. Using ICON BASS

Just like in other products of the SESSION GUITARIST series, the melody feature is provided in a separate **Melody** instrument. While the regular **Icon Bass.nki** is designed for the convenient playback of patterns, the melody instrument allows you to play your own bass lines and combine them with the included patterns within a single instrument.

The ICON BASS instruments are designed to be played using a MIDI keyboard. The patterns are triggered and selected via MIDI keyswitches, allowing for fast arranging.

Patterns will automatically sync to the master or host tempo. The patterns in this library can be played at any tempo from 60-65 bpm to 140 bpm and above. Since there is no time-stretching involved in the process, you will always hear the patterns in the highest possible quality.

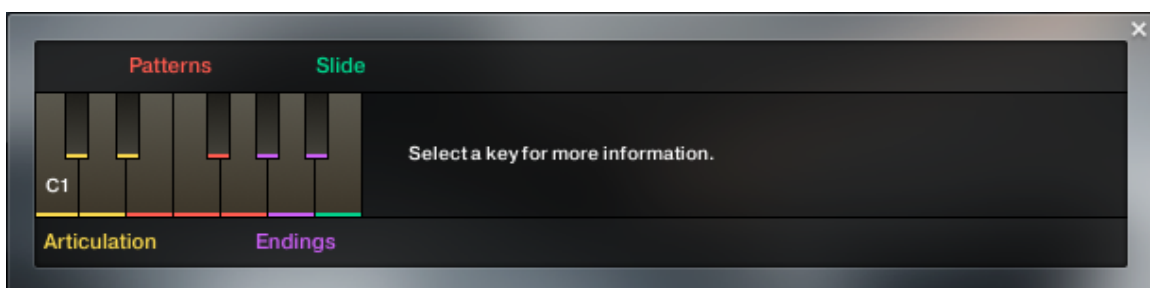
- i** The patterns are based on actual recordings by a professional studio musician, so they sound best in the typical tempo range for a given musical style.



*KONTAKT's on-screen keyboard, presenting the current keyboard layout.*

On KONTAKT's on-screen keyboard, all relevant keys and key ranges are color-coded: keyswitches for melody articulations (yellow), patterns (red), endings (purple), and slide (green). Melodies or patterns can be played in the blue key range.

- i** To view a detailed description of each key, you can open the Mapping Panel by clicking the small keyboard icon in the bottom right corner of the instrument.

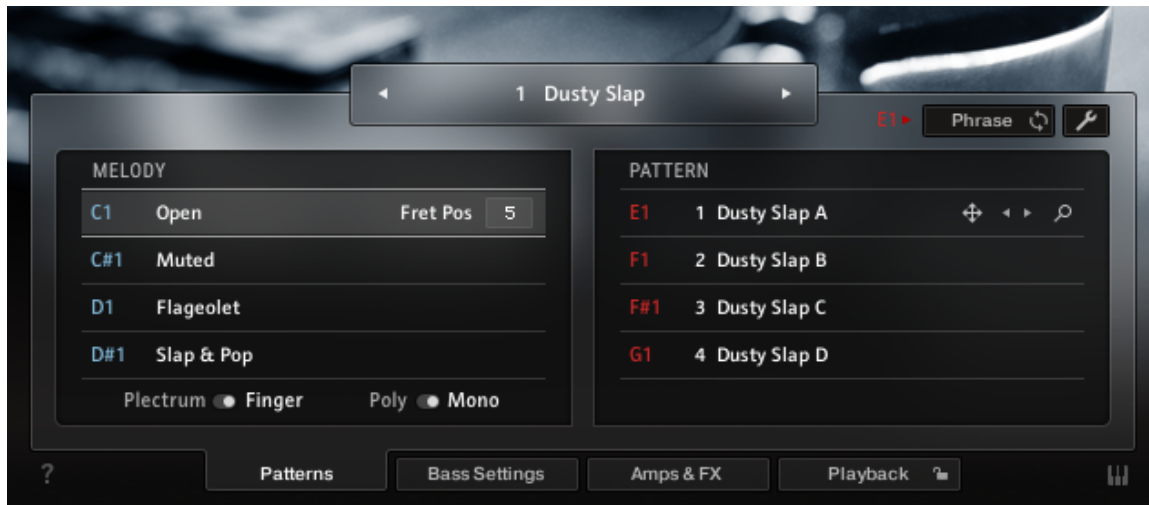


*The Mapping panel, which presents a more detailed graphical overview of the keyboard layout.*

### Playing Melodies

After loading the Melody instrument up, you are presented with a melody section on the left and a pattern section on the right. If the melody section is selected, the instrument will play the notes you press instead of sequencing a pattern. This enables you to play your own bass lines with ICON BASS.





*Melody and pattern sections in the melody instrument.*

- To **change melody articulations**, use the keyswitches from C1 to D#1 to switch between open, muted, flageolet, and slap & pop playing styles.
- The **Open articulation** is the most commonly used articulation: Plucking individual strings with either the fingers or a plectrum.
- The **Muted articulation** is created by resting the palm of the plucking hand on the strings, close to the bridge of the bass while plucking the strings. Muted hammer-ons and pull-offs can be triggered in the same manner as open hammer-ons and pull-offs.
- The **“Flageolet” articulation** is also called “harmonics”. It is created by dividing the string into sections of equal length by lightly touching the string at specific points. As a result, higher overtones are sounding instead of the original note. In this case, you will hear the octave above the played note, which is the first overtone.
- **Slap & Pop articulations:** To accommodate the different articulations needed for a typical slap performance using a single keyswitch, the instrument differentiates between briefly pressing the keyswitch and keeping the keyswitch pressed:
  - A short press on the D#1 keyswitch activates the slap articulation. This very bright sound is produced by hitting the string with the thumb, causing it to hit the frets of the bass.
  - Holding down the D#1 keyswitch while playing notes triggers the Pop articulation, which is produced by pulling the string away from the fretboard and letting it snap against the fretboard.
  - Releasing the D#1 keyswitch switches back to the Slap articulation.
  - Since every pop note is typically preceded by the characteristic sound of the playing hand touching the string, pressing this keyswitch triggers this percussive sound each time you press it.
- To **change the fret position value** of the selected melody articulation, adjust its **Fret Pos** value. Choose higher values to have the instrument perform notes in higher fret positions on lower strings, resulting in a more mellow tone. You can control the fret position in real-time for all melody articulations combined with the MIDI CC#114. For more information on MIDI controllers, refer to [Further MIDI Controllers](#).
- **Plectrum / Finger switch:** Below the articulation keyswitches, you can choose to play all of the above articulations with either **Plectrum** or **Finger**.
- **Poly / Mono switch:** The monophonic mode creates smooth transitions between notes, which helps to create realistic sounding solo lines and riffs. The polyphonic mode enables you to play multiple notes at the same time. Use this mode only if you intend to play multiple notes at the same time. In both modes, you can use the sustain pedal just like on a piano.

- To **apply vibrato or pitch bend**, use the pitch and modulation wheels of your keyboard.
  - When playing patterns, the pitch wheel doubles as an **Impact** controller, modifying the velocity and accent intensity of performed patterns (for more information, refer to [Controlling the Dynamics of the Performance](#)).
  - From the **Vibrato** drop-down menu, you can choose between three different vibrato styles.
  - The **Bend** drop-down menu offers the standard pitch bend mode (**All**), as well as a mode in which only specific notes (lowest, highest, softest, loudest, latest note) in a voicing are affected by the pitch bend. This enables the emulation of a specific playing technique by which only some of the played strings are bent and others, for example open strings, retain their original pitch.
- **Octave down:** Use the Octave down switch in the top left box to transpose the entire sample set down by an octave. This is not an insert effect like an octaver, but a powerful sound design feature, which works great for electronic and film music genres.



You can switch between the different vibrato speeds via MIDI CC#112 and choose between different pitch bend modes via MIDI CC#113. For more information on MIDI controllers, refer to chapter [Further MIDI Controllers](#).



When playing adjacent open notes, hammer-on and pull-off samples are added automatically if the velocity of the following note is significantly softer than the one previously played. This works only for overlapping (legato) notes up to an interval of a minor third. Monophonic mode is recommended, but not required to use this feature.

## Combining Melodies and Patterns

The melody instrument provides two different modes, namely the **Melody** mode and the **Pattern** mode. By default, it is in **Melody** mode.

- To **switch from melody to pattern**, hold down one of the pattern keyswitches from E1 to G1 with your left hand, while playing notes with your right hand. The instrument will temporarily perform those notes as a pattern. If a pattern is in **Phrase** mode (refer to [Phrase and One Pitch Mode, MIDI Drag and Drop](#)), triggering its keyswitch will cause the pattern to be played back using the notes contained in the phrase, transposed to the key of the note you play on the keyboard.
- To **switch back to melody**, release the pattern keyswitch with your left hand. If you still hold notes in your right hand at that moment, the instrument tries to sequence one more note that would have followed had you continued with the pattern playback. For example, if you release the pattern keyswitch shortly before the next downbeat while still holding notes with your right hand, the instrument will switch back to melody mode with one last note onto that downbeat.
- To **play patterns instead of melodies by default**: If you are mainly intending to use the melody instrument to play patterns, you can change the default mode from **Melody** to **Pattern** on the Playback page (refer to [The Playback Page](#)). When **Pattern** is selected as the default mode, holding down one of the **Melody** keyswitches (C1 to D#1) will engage the melody mode temporarily. However, the Pop articulation is not available when **Pattern** is selected as the default mode.



To achieve musically convincing results, it is advisable to use the instrument within your sequencer and to play along with its metronome.



The included pattern library is identical in the pattern instrument and the melody instrument, and the procedures to load, modify and play back patterns are similar. However, to accommodate the melody articulations, the number of pattern slots has been reduced from eight to four in the melody instrument.

## Pattern Selection and Playback

The following section describes the pattern instrument. While most of the information also applies to the melody instrument, refer to [Playing Melodies](#) and [Combining Melodies and Patterns](#) for detailed information about the features which are specific to the melody instrument.

- To **select a pattern**, press the corresponding keyswitch MIDI note or click on the pattern you wish to play.
- To **play a pattern**, play notes on your MIDI keyboard. After releasing the keys, playback will be stopped within a specified note duration (refer to Latch Mode in [The Playback Page](#)).
- To **end the playback at a precise point in time**, it is recommended to use the Bb1 keyswitch or one of the other **ending** keyswitches (refer to [Playing Dead Notes, Endings and Slides](#)).
- To **load a different pattern into a slot**, click on the magnifier icon in the current slot. This will open the Pattern Browser (refer to [The Pattern Browser](#)).
- To **load the next or previous pattern** of the pattern library, click on the little left or right arrow buttons in the current slot.
- To **remove a pattern (clear the slot)**, [Alt] + click on a slot.



It is recommended to play notes or pattern changes briefly ahead of the beat and avoid overlapping notes to give the playback engine time to anticipate the transition. This way, the engine has enough time to add fret noises and the transition will sound more natural. As the performance is bound to the metronome of the sequencer, the timing of incoming MIDI events has no effect on the timing of the performance. For more information, read [Tips and Tricks](#).



If available, **Chase Events** should be activated in your DAW settings. This will ensure that the engine gets proper note information on sequencer start or cycle jumps.

## Loop and Single Note Pattern Types

The playback engine creates patterns in one of two different ways: some of the patterns are based on recorded performances, while others are based on sequenced single note samples (referred to as single note patterns below).

- Recorded loops contain a little note icon next to their name in the Pattern Browser (refer to [The Pattern Browser](#)).

- Single note patterns have a little staircase icon next to their name in the Pattern Browser.
- The articulation and fret position of single note patterns can be adjusted in the Pattern Inspector (refer to [The Pattern Inspector](#)), and their velocity can be adapted over a wider range (refer to [Controlling the Dynamics of the Performance](#)).
- While being less flexible, patterns based on recorded performances might contain special articulations or timbres that would have been impossible to realize with single note samples.

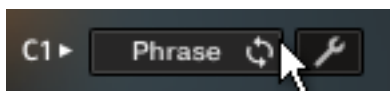


When playing single note patterns, you can trigger slides between different pitches by playing the newly added keys with a very high velocity: the next suitable note will start with a slide if it is being played with a velocity greater than 110. To use slides when playing melodies, hold down the B1 keyswitch while playing melody notes.

## Phrase and One Pitch Mode, MIDI Drag and Drop

A large number of the included patterns contain melodic phrases, while others are based on just one single pitch. To display phrase patterns only, click the Phrase button in the pattern browser.

- To **play the unaltered, original phrase**, press only one single key.
- To **adapt a specific phrase to a given scale, chord or interval**, play the required chord or interval, such as a third, a sixth, a seventh on your keyboard. The corresponding notes contained in the phrase will be adapted accordingly. This way, you can easily convert a major third to a minor third, or vice versa.
- To **toggle between Phrase mode and One Pitch mode**, select a phrase pattern, and then click on the **Phrase / One Pitch** toggle button.



In **One Pitch** mode, the rhythm of a phrase pattern will remain the same, but the melody is reduced to a single pitch. You can then play the pitches on your keyboard ahead of any new note position within the pattern's rhythm. Patterns which do not contain melodic phrases cannot be toggled, and for those patterns the **Phrase / One Pitch** toggle button is not active.

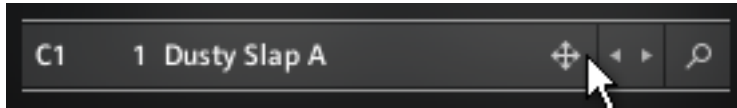


Just like regular patterns, phrase patterns can be based on either a recorded performance (note icon in pattern browser) or on sequenced single note samples (staircase icon in pattern browser). You can change the playing style and fret position of the latter type in the pattern inspector (refer to [The Pattern Inspector](#)).

- To **permanently switch all phrases to One Pitch mode**, press [alt] + click the **Phrase** button. Press [alt] + click again to switch back to Phrase mode. After that, the selected mode will be retained globally, even if you load new patterns or songs.

## MIDI Drag and Drop

- To **export a phrase into your DAW as a MIDI file**, drag and drop the arrow icon next to the selected pattern into a MIDI track. The root pitch will be based on the last pitch you played.



This will create a MIDI part containing the pitch progression of the respective phrase, with each MIDI note properly positioned ahead of the beat (refer to Create Natural Transitions in [Tips and Tricks](#)). Additionally, the MIDI part contains a keyswitch ensuring that the correct pattern is selected. Since the different MIDI notes of a phrase are now being sequenced by the DAW, the pattern will be automatically switched to One Pitch mode. Now, you can transpose the incoming MIDI notes to change the melodic line, retaining the original rhythmic structure.

**i** Since ICON BASS is based on two-bar patterns, make sure to drag the MIDI loop onto an uneven bar number (bar 1, bar 3, bar 5, bar 17 etc.). Please note that loading a different pattern, changing the pattern tempo (half time, double time), or adjusting the length or the start shift in the pattern inspector will render the corresponding MIDI part incompatible. In this case, delete the old MIDI part and drag the phrase into your DAW again.

## Playing Dead Notes, Endings and Slides

In addition to the actual patterns, ICON BASS provides a variety of endings, as well as slides and percussive sounds. The corresponding sets of keys are marked purple and green on the KONTAKT on-screen keyboard. The table below describes the functionality of each keyswitch for both the pattern instrument and the melody instrument:

	Pattern Instrument	Melody Instrument
G#1	Long ending	Slide up: End sounding notes with an upward slide. If there are no sounding notes, you will hear a regular slide. The speed of the slide depends on the incoming velocity.
A1	Slide down: End sounding notes with a downward slide. If there are no sounding notes, a long ending will be played and the slide will sound only when releasing the key.	Slide down: End sounding notes with a downward slide. If there are no sounding notes, you will hear a regular slide. The speed of the slide depends on the incoming velocity.
Bb1	Mute strings → Slap strings with thumb	Play dead notes based on the selected articulation. Holding down this key will allow you to play dead notes chromatically. Dead notes are velocity sensitive.
B1	Slide down. At high velocities, an up-down slide is performed.	Slide modifier: Hold this key to start melody notes with a slide. The slide interval and direction depends on the previous note.

## Controlling the Dynamics of the Performance

The patterns included in ICON BASS ignore the velocity information coming from your MIDI keyboard or DAW. Instead, you can continuously control the dynamics of the performance with the impact slider. As the melody instrument is velocity-sensitive while in melody mode, the pitch bend wheel doubles as a pitch bend controller when playing melodies.



*The Impact feature*

Use your MIDI keyboard's pitch wheel to control the Impact/pitch bend. It works as a bi-polar control to increase or decrease the playing intensity of the musician. The neutral default position is the center position which can also be recalled via [Cmd] + click.



The Impact feature can be used to smoothen transitions between patterns with differing overall dynamics.



While the velocity coming from your keyboard doesn't affect the dynamics of the performance, you can use it to trigger slide transitions when playing patterns. Try playing notes with a velocity greater than 110, a slide transition will be added at the next suitable position.

## Loading and Saving Sound Presets

With ICON BASS, you can easily customize the sound. Each sound preset includes all parameters of the **Amps & FX** page as well as some of the parameters of the **Bass Settings** page (refer to [The Amps & FX Page](#) and [The Bass Settings Page](#)). You can load sound presets from the Sound Preset drop-down menu in the top right corner of the instrument.



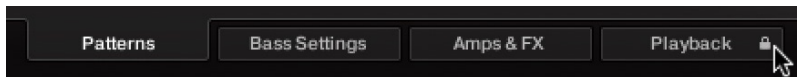
*The Sound Preset box in the top right corner of the instrument.*

- To **load a factory or user sound preset**, either select a preset from the drop-down menu, or cycle through all presets by clicking the little left and right arrow buttons.
- To **save a new user sound preset**, enter a preset name into the text field and click on the floppy disk icon. This will store the current sound settings into a new user preset.
- To **overwrite a user sound preset**, first load it and then make changes on the Bass Settings or Amps & FX page. Then click the floppy disk icon without changing the preset name. If you change the preset name before saving a preset, a new sound preset will be created instead of overwriting the existing one.
- To **delete a user sound preset**, select it from the drop-down menu, then click the circular Delete button.

- **Linking sound presets to Song presets:** If the **Link to Song** switch is activated, selecting a song preset (refer to [The Song Browser](#)) will also load its corresponding sound preset. Deselect it to change songs without altering your bass and effects settings.

## Locking Parameters When Loading Snapshots or Songs

Normally, when you load snapshots or songs (refer to [The Song Browser](#)) of the instrument, all parameters will be set accordingly. Therefore, snapshots and songs are stored and recalled globally. To prevent the Playback parameters from being changed by loading snapshots or songs, click the lock icon on the Playback tab.



*If the Playback parameters are locked, they will not be changed by snapshots or songs.*

## Resetting the Round Robin Counter

To enhance the realism of ICON BASS, the entire sample content employs a method which is called "Round Robin": Each sample was recorded multiple times and if the same pitch is being played with the same velocity multiple times in a row, ICON BASS automatically alternates between those different recorded samples of a given pitch and velocity. These variations are called "Round Robins". The result is repetitions that sound less mechanical and more like a performance by a real musician, as the tone varies ever so slightly. As the instrument is automatically cycling through the different Round Robins, the performance will slightly differ each time you're playing it back in your sequencer.

While this is beneficial to the overall realism, you might find that a certain Round Robin sample matches the required phrase better than another. You can reset the Round Robin counter by sending continuous controller 3 (CC#3) to the instrument at the beginning of a song section. This way, you will be hearing the exact same samples every time the section is being played back.



When exporting/bouncing your song, placing a CC#3 value at the beginning of your arrangement will lead to a deterministic result: Each bounce will be using the exact same samples, rather than a random constellation of Round Robins.

## Defining the Downbeat after Signature Changes

Since there is no way for the instrument to recognize signature changes or insertions of half a bar etc., present in your DAW session, its pattern playback would get out of sync in those cases. To solve this problem, you can use the global transport offset feature to compensate for a change of signature or bar length during playback.

→ To define a global transport offset in ticks, send MIDI CC#111.

The value you send (ranging from 0 to 127) will be multiplied by 80 ticks and added as an offset to the host transport. 80 Ticks is the length of a 32th triplet, which is the greatest common divisor for all note values available in the instrument. Twelve 32th triplets equal a quarter note. Therefore, to insert half a 4/4th bar (i.e. shift the playback by two quarters or  $2 \times 12$  32th triplets), you would need to send MIDI CC#111 with value 24, etc.

The following table shows typical values needed for common offsets:



Offset	CC#111 value
No offset	0
One quarter	12
Two quarters	24
Three quarters	36
Four quarters (= one 4/4 bar)	48
Five quarters	60
Six quarters	72
Seven quarters	84
Two 4/4 bars (= no offset)	96
Minus one quarter	84
Minus two quarters	72
Minus three quarters	60
One eighth note	6
One eighth triplet	4

## Further MIDI Controllers

**CC#112:** Set Vibrato speed. You can change the setting for the Vibrato speed by sending a continuous MIDI controller event to ICON BASS:

Offset	CC#112 Value
Slow	0–42
Medium	43–84
Fast	85–127

**CC#113:** Set Pitchbend Mode (only available in the "Melody" nki). In the melody instrument, you can change the Pitch Bend mode by sending a continuous MIDI controller event to ICON BASS:

Pitchbend Mode	CC#113 Value
All: Bend all notes	0–21
Low: Bend lowest note only	22–42
High: Bend highest note only	43–63
Soft: Bend softest note only	64–84
Loud: Bend loudest note only	85–105
Last: Bend latest note only	106–127

**CC#114:** Set Fret Position for all melody artics (only available in the "Melody" nki). In the melody instrument, you can change the Fret Position of all Melody articulations sending a continuous MIDI controller event to ICON BASS:

Fret position	CC#114 Value
0 ( = Open Strings included)	0–9

Fret position	CC#114 Value
1	10-19
2	20-29
3	30-39
4	40-49
5	50-59
6	60-69
7	70-79
8	80-89
9	90-99
10	100-109
11	110-119
12	120-127

## 6. Navigating ICON BASS

The following sections describe the different browsers and pages in ICON BASS. These include the Pattern Inspector, Song Browser, Pattern Browser, Bass Settings, Amps & Effects, and Playback pages.

### The Pattern Inspector

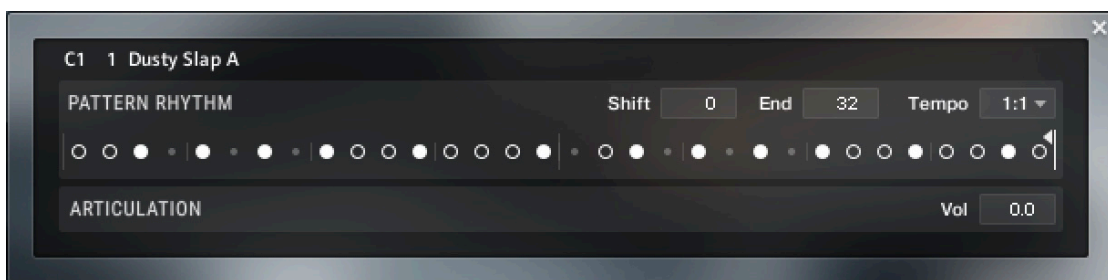
The Pattern Inspector provides access to various parameters that will modify the length, start position, volume, and tempo of any pattern. The values of the Pattern Inspector will always refer to the selected pattern. In other words, if you select a different pattern, the Pattern Inspector will adapt its content accordingly.

To **show or hide the Inspector Panel**:

- Click on the wrench icon button.



→ The Pattern Inspector opens.



The Pattern Inspector contains the following settings and controls:

- **Shift:** Edit this value to shift the selected pattern's start (entry) position. Alternatively, you can drag the pattern's rhythm display left or right.
- **End:** Edit this value to reduce the selected pattern's length so that it will loop earlier. Alternatively, you can drag the terminating flag left or right.



You can use the End Step feature very creatively. For example, you can trim a 4/4 signature pattern by eight 16th snippets, so that it will perfectly fit a 3/4 signature. You can also trim any pattern to odd signatures, such as 5/8 or 7/8. Combined with the Start Shift feature, you have very powerful tools to create whole new patterns and feels (e.g., start-shift a constant eighths pattern from on-beats to off-beats, etc.). Be creative!

- **Tempo:** With the three tempo choices in the drop-down menu, you can switch the selected pattern's tempo from normal (1:1) to half time (1/2) or double time (×2). Please note that there is also a global time scaling feature on the Playback page (refer to [The Playback Page](#)). Its tempo factor will be multiplied by each pattern's individual tempo factor.

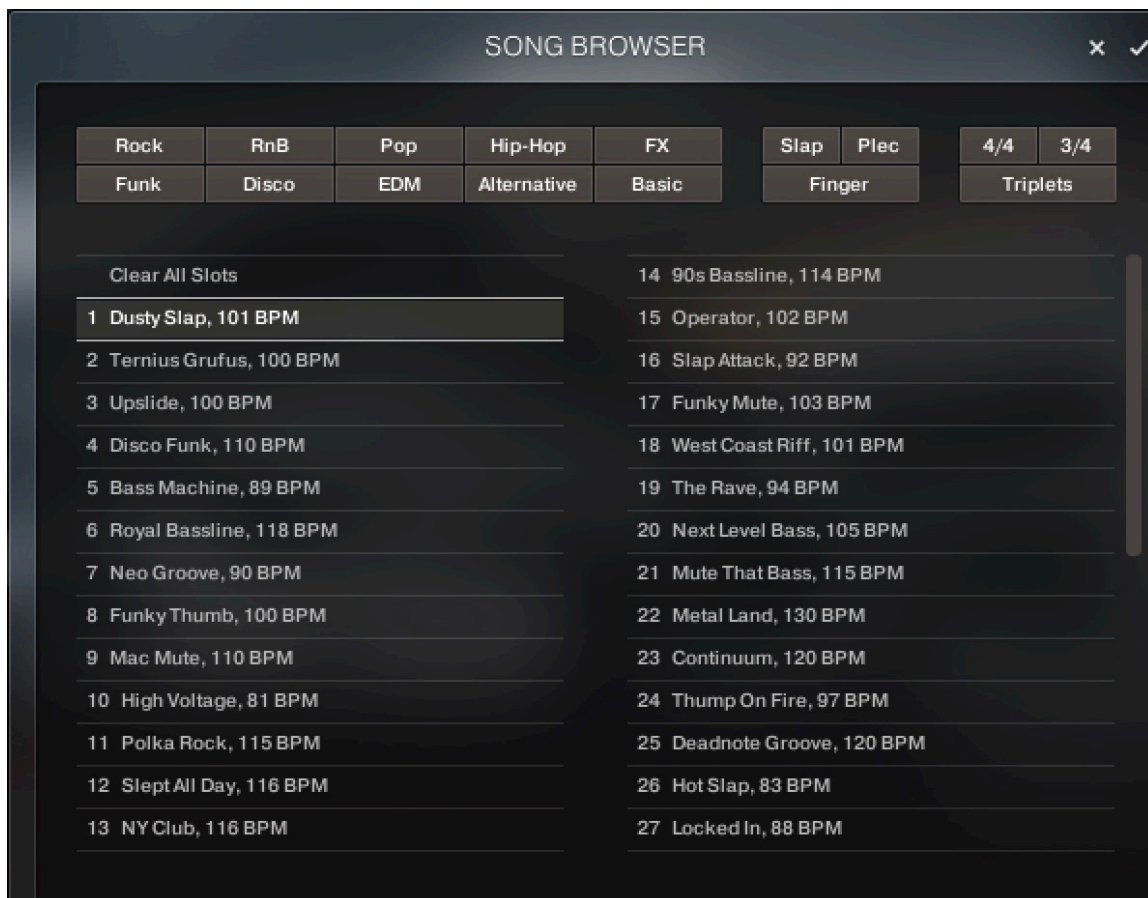


With slow host tempos, switching a pattern to half time may not work if the actual relative tempo falls below the limit of ca. 65 bpm.

- **Style** (available for patterns only): From this drop-down menu, you can select three different playing techniques: open, muted and flageolet, each played with fingers or plectrum. For some of the patterns, you can also choose a pre-defined mixture of them (**mixed**). Choose **Original** to hear the pattern in its original state.
- **Fret Pos** (available for patterns only): Change this value to make the virtual bassist play in higher fret positions, which typically results in a more mellow tone.
- **Vol:** Change this value to adjust the volume of the selected pattern, ranging from -24 dB up to +24 dB in 0.1 dB increments.

## The Song Browser

In ICON BASS, a Song is a preset that contains up to eight related patterns along with a factory sound preset as well as some settings of the Playback page. The patterns contained in a Song are loaded into the pattern slots.

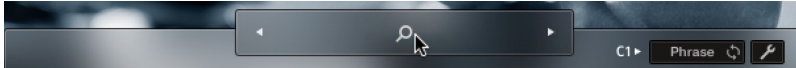


The Song Browser

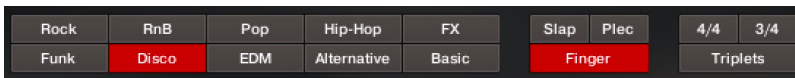
**i** If you want songs to apply their recommended sound settings, activate the **Link to Song** feature in the top right box. If you deactivate this feature, the current sound settings won't be changed when you load a song.

To **browse songs and then load a Song**:

1. Click on the current song name; this will open the Song Browser.



2. Use the attribute buttons at the top of the browser to filter the list of displayed Songs by various attributes or styles. To show all Songs, deselect all attribute buttons, which can also be accomplished by pressing [Alt] + clicking any button.



3. Clicking on the name of a song preset will play back an audio preview of the respective song and its sound preset. Unlike pattern prelisten, the prelisten tempo of a song will not follow the host sequencer. Instead, the pattern will be played back at its recommended tempo.
4. To load a Song, double-click its name or click on the tick button. If you wish to exit the Song Browser without changing anything, click on the **X** button instead.



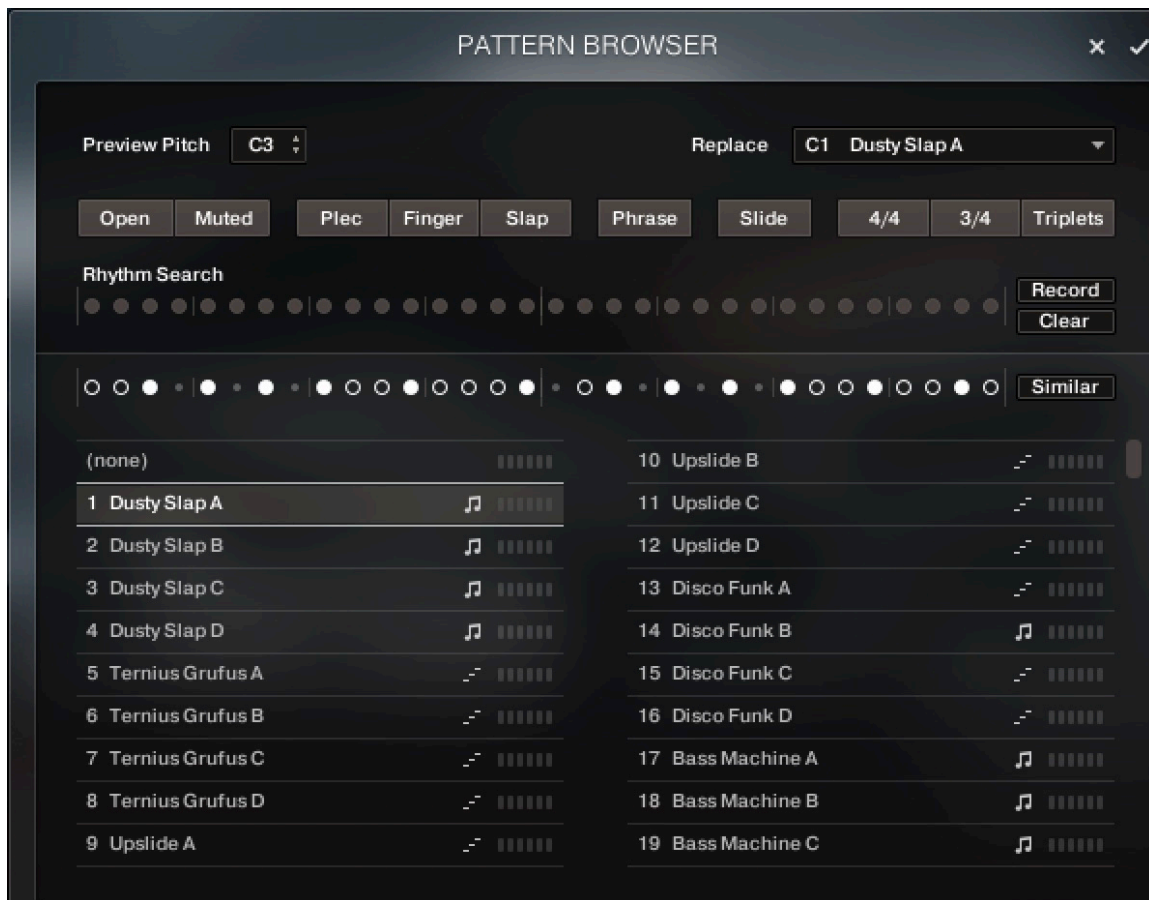
Alternatively, you can cycle through the included Songs, without entering the Song Browser, by clicking on the triangular arrows to the left and right of the current Song name.

## The Pattern Browser

Since a preset Song might not meet your exact needs, you might wish to change a slot's pattern, or load additional patterns into specific slots. Click on the magnifying glass icon right next to any pattern to open the Pattern Browser.



Clicking the magnifying glass icon will open the Pattern Browser.



The Pattern Browser

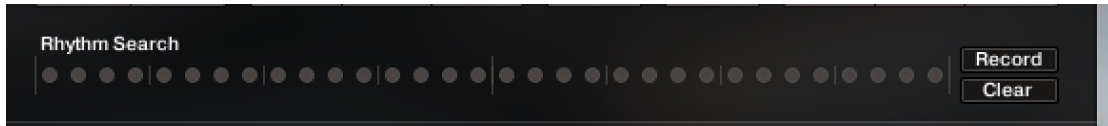
The top area of the Pattern Browser holds a series of buttons that you can use to refine your search, including a Rhythm Search strip, which is a very powerful tool for finding patterns that match your custom rhythm. The body of the Pattern Browser contains a list of all patterns matching the current search criteria. If the list is too long to fit the screen, you can scroll through the list by dragging the scroll handle on the right up or down.

**i** The Rhythm Search strip is merely a tool to find pre-recorded patterns in the pattern library. It is technically impossible to create your own patterns by entering a certain rhythm, so, despite its look, the Rhythm Search strip should not be confused with a step sequencer.

- To **search a pattern by attributes** (and not by rhythm), make sure the Rhythm Search strip is cleared. If it is not, click the Clear button next to the strip. Then refine your search by selecting any of the attributes, such as **Muted**, **Finger**, **4/4**, etc. If you want to bypass a category (such as **Plec/Finger/Slap**), deselect all attributes of that category. Consequently, you would need to deselect all attributes to display all patterns.



- To **search a pattern by attributes and rhythm**, first, select/deselect the desired attributes as described above. Then, enter the rhythm you are looking for into the Rhythm Search strip. With each new rhythm snippet that you enter, the pattern list will be refreshed in real-time, sorted by the similarity of the desired rhythm to the rhythm of all patterns available in the library, in descending order.



There is a powerful shortcut feature to quickly enter a repeating pattern into the Rhythm Search strip: enter the beginning of the pattern and then [Alt] + click on the position of the first repetition. Furthermore, if you [Alt] + click on the first snippet, all other snippets will be activated/deactivated.

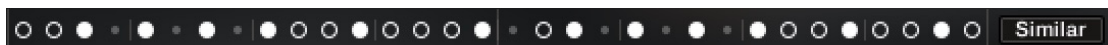
- To **'tap in' a rhythm**: first press the Record button and hear the metronome count-in. Then start playing a rhythm on your MIDI keyboard or click on the 'Tap' button. You can start at any time, so you can also start with a pickup beat. After 2 bars the recording will automatically stop, and the search results will be listed.

The rhythm search algorithm is very powerful. It will compare the rhythm defined in the Rhythm Search strip not only to the rhythm of the other patterns from start but also from any possible shifted starting position. This way, patterns with specific start shift offsets might be revealed as musically matching-patterns which otherwise would simply be overlooked. If the perfect start shift offset is different from 0, the value is appended to the pattern name. Upon loading a pattern, that offset will automatically be applied and entered into the Pattern Inspector (refer to [The Pattern Inspector](#)). Also, the Rhythm Search algorithm will rate accents higher than non-accentuated snippets. So, if you're searching for accents following a certain rhythm, try entering the accents only.



If you cannot find the desired rhythm straight away, chances are that you can create that particular rhythm by separately searching for the first and second half of the rhythm of a desired pattern, loading the two halves into two different slots, and combining them during playback. Alternatively, you can load the same pattern into two different slots and adjust the Start Shift of one of them, in order to shift accents to the desired positions.

- To **search for patterns similar to the selected one**, you would need to search for patterns with a rhythm similar to the selected pattern's rhythm. Instead of entering and copying the rhythm manually, you can simply transfer the rhythm of the selected pattern into the Rhythm Search strip by clicking on the Similar button.



- This will start a search and put the selected pattern at the very top of the listed results, since that pattern matches its own rhythm a 100 percent, of course. Rhythmically similar patterns will be listed subsequently.
- To **play a preview of a pattern**, click on any of the listed patterns. This will also display the pattern's rhythm structure in the second strip. The preview playback will sync to the host tempo and transport position if the transport is running. However, only one selectable pitch can be previewed. Incoming MIDI notes will be ignored.



- To **stop the preview playback**, simply click on the playing pattern again or, if the host transport is running, stop it.
- To **change the preview pitch**, select a pitch in the top drop-down menus or value dragger.



- To **load a pattern**, simply double-click the pattern or click the tick button. (If you want to cancel the process, click the **X** button instead.)



- To **load a pattern to a different slot** than the currently selected one, choose one of the eight available pattern slots from the drop-down menu in the upper right corner. Confirm by clicking the tick button, or double-click the respective pattern.



- The selected pattern will now be loaded into the selected slot; a previous pattern of that slot will be replaced. The pattern browser will be closed.

## The Bass Settings Page

Click on the Bass Settings tab (at the bottom of the instrument) to display the Bass Settings page. This page provides controls that you can use to adjust the sound of the bass itself, whereas the Amps & FX page provides virtual effects, such as EQ or reverb. This page is divided into several sections, each of which is described below.



*The Bass Settings Page*

- **D.I. SIGNAL - Volume:** Use the Volume control to adjust the volume level of the D.I. signal.
- **D.I. SIGNAL - Tone:** Use the Tone control to adjust the equalizer response of the D.I. signal. Turning the control to the right produces the high-frequency clarity and low-frequency punch of the original instrument's equalizer. Turning the knob to the left produces a mid-frequency focus.

- **MIC - On/Off Button:** Use the On/Off button (red square symbol) to mute the microphone signal.
- **MIC - Volume:** Use the Volume control to adjust the volume level of the acoustic microphone signal, adding clarity and impact to the sound.
- **MIC - Tone:** Use the Tone control to adjust the equalizer response of the microphone signal. Turning the control to the right produces the high-frequency clarity and low-frequency punch of the original instrument's equalizer. Turning the knob to the left produces a mid-frequency focus.
- **DAMPING - Decay:** You can set the decay time of notes by adjusting the Decay control. To adjust the decay in real-time, right-click to assign a MIDI controller to this knob. This way, it is possible to emulate continuous progressions from very short notes to a gradually longer decay or vice versa.
- **NOISE - Frets:** Use this knob to adjust the volume of fret noises, which are automatically added upon changing pitches. When playing melodies or pattern pitch changes, the instrument emulates fingering noises and the ringing of the section of the strings between the saddle and the left hand of the bassist.
- **NOISE - Noise Floor:** Use this knob to raise the noise floor. The noise floor is switched off while the instrument is not playing.
- **TUNING:** Use this knob to detune the bass.



Moderate levels of noise floor, fret noises, and detune can help add realism and create a more tangible bass sound.

## The Amps & FX Page

Clicking on the **Amps & FX** tab (at the bottom of the instrument) will open a page where you can apply several studio effects to the signal.



*The Amps & Effects Page*

The effects chain displays the currently loaded effects. Clicking an effect icon displays its settings in the inspector section below.

- To **change the order of the effects**, simply drag and drop the respective icon in the effects chain left or right.
- To **bypass an effect**, click the yellow square button next to its name.
- To **bypass the entire effects chain**, click on the yellow square to the left of the Amps & Effects page title. Please consider that the effects still require processing power, unless the effects chain is cleared.
- To **clear the entire effects chain**, click on the **Clear All** button in the upper right corner and confirm.



If you want to process the unaltered recorded signal with external effect plugins, you can save CPU resources by clearing the entire effects chain instead of just bypassing it.

- To **remove an effect**, click on the **Clear Slot** button on the right-hand side.



- To **load a different effect into the current slot**, click the magnifier icon next to the inspector heading or click the magnifier icon that appears when hovering the name of an effect slot. This will open the AMPS & FX BROWSER. In that browser, click on the desired effect to load it into the selected slot. If the effect slot wasn't empty, the loaded effect will automatically replace the previously loaded one.



*The Amps & Effects Browser*

## The Playback Page

Clicking on the **Playback** tab (at the bottom of the instrument) will open the **Playback** page. This page contains settings that affect the way the patterns are played back. This page is divided into several sections, each of which is described below.

To exclude the Playback settings from Songs or snapshots, click the lock icon on the Playback tab at the bottom of the instrument (refer to [Locking Parameters When Loading Snapshots or Songs](#)).



The Playback Page

- **Humanize:** Use the Humanize knob to set the amount of quantization added to all patterns. In the right position, the timing of the original performance will remain unaltered. At the left position, the performance will be fully quantized.
- **Swing:** Use the Swing knob to set the amount of swing added to each pattern. You can select between a 16th note or a 8th note base via the switch below.
- **Feel:** Use the Feel control to shift accents in a pattern from the downbeat to the offbeat and vice versa. Make sure the correct time base is selected (16th or 8th notes).

**i** If the Swing or Feel knobs don't affect the playback, it is very likely that either a triplet pattern is selected, or the respective time base has to be changed from 16th to 8th notes.

- **Timing Shift:** Increase the offset for a laid back feel or decrease the offset to have the virtual bass play ahead of the beat.
- **Latch Mode:** After you have released all keys, the pattern playback will automatically stop within the note duration specified in the **Latch Mode** drop-down menu.

**💡** The slightly delayed stopping of the playback enables the engine to perform smooth transitions from one pitch to the next, even if the incoming MIDI notes are not played as a seamless legato performance. However, if you want to stop the performance at a specific position in the arrangement, e.g., to perform a break, it is advisable to trigger one of the "ending keys" (G#1, A1, Bb1) at the desired position.

- **Pattern Sync:** Use the drop-down menu to select one of two available sync modes.
  - **Sync to host:** With this mode selected, pattern playback will start in sync with your host sequencer. As ICON BASS is based on two-bar patterns, make sure to start your song on bar one or any other uneven bar number (e.g. bar 3, bar 5, bar 17).
  - **Start on a key:** With this mode selected, pattern playback will start from the beginning as soon as the first note is being played, ignoring the current host playback position. As long as the playback does not get interrupted (refer to LATCH MODE above), this shifted performance will be retained even if you subsequently play notes.
- **Default Mode (melody instrument):** In the melody instrument, you can combine melodic playing and pattern playback into one cohesive performance. When set to **Melody**, you can play melodies by default, and holding down a pattern keyswitch will temporarily trigger a pattern. When set to **Pattern**, the instrument will perform patterns by default, and holding down one of the melody keyswitches will temporarily allow you to play melodies (for more information, refer to [Combining Melodies and Patterns](#)).
- **Tempo:** Here, you can select between three tempo ratios 1/2 (half time), 1:1 (normal time), or x2 (double time), which will globally affect the pattern playback speed relative to the host tempo. Please note that there is also a local time scaling feature available for each pattern (refer to [The Pattern Inspector](#)). The individual patterns' tempo factors will each be multiplied by the global tempo factor.



With slow host tempos, switching the global tempo to half time may not work if the actual relative tempo falls below the limit of around 65 bpm.

## 7. Tips and Tricks

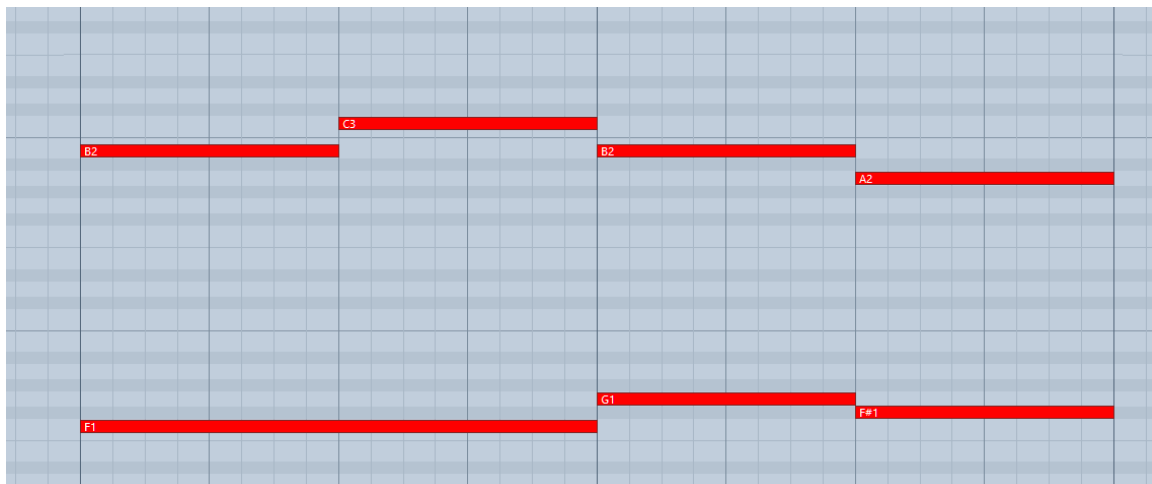
Last, but not least, the developers would like to share a couple of tips to help you get the most out of ICON BASS:

### Use the Melody Instrument to enhance the Pattern Playback

The melody feature makes it possible to add melodic fills to spice up an otherwise repetitive performance: Load the Melody.nki and switch the default mode on the Playback page to **Pattern**. Now, you can perform patterns just like in the regular instrument, but holding down a melody keyswitch will enable you to add monophonic or polyphonic fill-ins or variations to the pattern performance. The instrument will create smooth transitions between patterns and melody notes whenever possible.

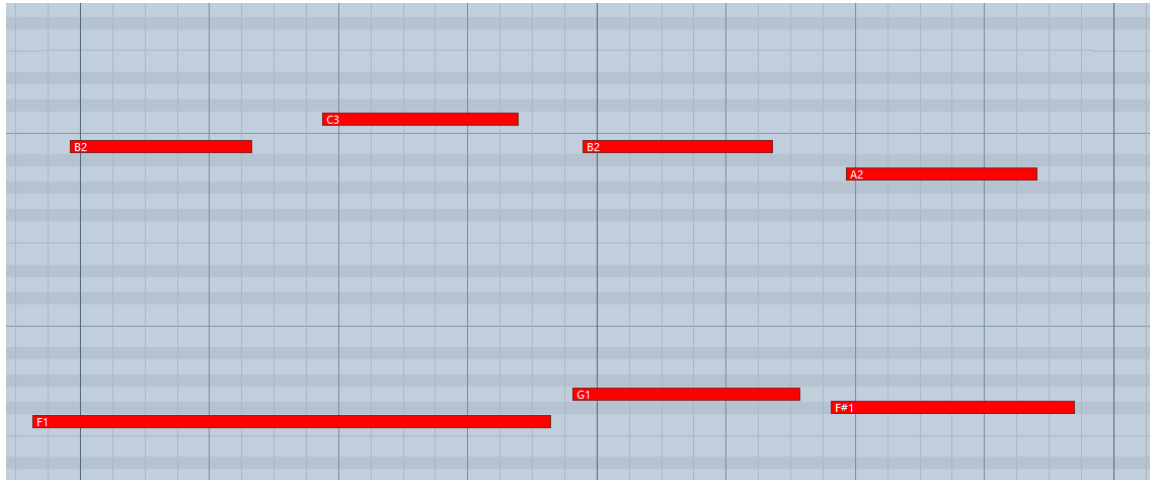
### Create Natural Transitions

To create realistic sounding transitions between different pitches or patterns, do not quantize your keyboard performance. Instead, make sure that all pitch and pattern changes are played slightly ahead of the beat. This way, ICON BASS can anticipate that a pitch or pattern change or pattern change is about to take place and perform the transition in the most natural way. Depending on the note progression, an appropriate fret noise is added automatically. These natural transitions would be impossible if you quantized your MIDI data. Triggering the patterns before the beat will not make the performance sound out of time, as the timing is bound to the internal metronome of your sequencer. Also make sure that notes do not overlap, because an overlap would technically mean that two pitches are played at the same point in time.



*Bad: Quantized MIDI data will cause the pitch changes to happen too late for the fret noises to be played back; this will not create realistic transitions.*





*Good: MIDI notes placed ahead of the quantized position will result in realistic sounding transitions. Note that the keyswitches are triggered slightly before the actual notes.*

## Combine Patterns Creatively

We spent a lot of time making transitions between patterns and notes as smooth and natural as possible. Therefore, if you switch between patterns that have a similar playing style but different rhythms, the transitions will very likely sound as smooth as if the resulting rhythm would have actually been performed this way. So instead of sticking to a single repetitive pattern for a long time, you can enhance realism by switching back and forth between patterns to add variations here and there. In most cases, adding minor rhythmical changes at the end of the second bar does the trick.

## Create Custom Groove Variations

If you'd like to add variations to spice up a pattern using the technique described above, you might find yourself in a situation where the beginning of a pattern contains the bit of rhythmical variation you'd like to use at the end of another pattern. You can move the variation into place by clicking the wrench button (refer to [The Pattern Inspector](#) for more information) to open the Pattern Inspector and shift the pattern to the desired position. Another way to get there is to use the **End Step** feature: shorten the pattern to e.g. 8 steps (two quarter notes). Although the resulting pattern will be very short and thus will sound pretty repetitive in itself, it will contain a predictable rhythm that you can use to add a variation to another pattern.

## Use Authentic Humanization

The **Humanize** knob on the Playback page does not simply add random offsets to approximate realism. Instead, it recreates the actual timing of the bassist when performing the patterns during the recording session. Even if subtle, the **Original** setting sounds more akin to a real bassist playing the instrument. Adding small amounts of **Shuffle**, slightly increasing the **Timing Shift**, and shifting the accentuation of patterns towards the downbeat or backbeat with the **Feel** control can greatly improve how the groove of the bass fits in with the other instruments of an arrangement.

## Use the Impact Slider as a Drama Controller

When moving towards a quiet passage in your song, move the impact slider to the left. As you approach the chorus, slowly move it to the right. If applied correctly, this makes the virtual musician play towards a certain musical event, e.g. the chorus or a break. You can also use the pitch wheel to smoothen the transition between patterns which are played at different volumes.

## 8. Credits

**Product Concept & Design:** Samuel Dalferth, Daniel Scholz, Sebastian Müller

**UI/UX:** Irene Dahlmann, Samuel Dalferth, Barbara Klein

**KSP Scripting:** Daniel Scholz

**Product Management:** Grant Smith

**Project Management:** Simon Janssen, Grant Smith

**Bassist:** Jakob Winterstein

**Recording Engineer:** Jonas Roßner

**Sample Post Production:** Peter Scholz, Daniel Scholz, Simon Janssen, Jonas Roßner, Samuel Dalferth

**Documentation:** Daniel Scholz, Samuel Dalferth, Jan Ola Korte, Jonas Körwer

**Library Concept:** Jonas Roßner, Simon Janssen, Sebastian Müller, Samuel Dalferth, Flo Naegeli, Aurid Gjini, Jakob Winterstein, Gwenael Damman

**Sound Presets:** Samuel Dalferth, Jonas Roßner, Luke Batterbury, Sebastian Müller, Chas Hunter, Angelos Liaros, Tommaso De Donatis, Daniel Scholz

**Quality Assurance:** Elad Twito

**Marketing:** Maxime Donnet, Geoff Wright, Lucy Crouch, Maik Siemer, Alastair Oloo, Samuel Hora

**Finalization & Encoding:** Elad Twito