



TRAKTOR SCRATCH PRO 2

SOFTWARE AND TIMECODE KIT

SETUP GUIDE



The information in this document is subject to change without notice and does not represent a commitment on the part of Native Instruments GmbH. The software described by this document is subject to a License Agreement and may not be copied to other media. No part of this publication may be copied, reproduced or otherwise transmitted or recorded, for any purpose, without prior written permission by Native Instruments GmbH, hereinafter referred to as Native Instruments.

“Native Instruments”, “NI” and associated logos are (registered) trademarks of Native Instruments GmbH.

Mac, Mac OS, GarageBand, Logic, iTunes and iPod are registered trademarks of Apple Inc., registered in the U.S. and other countries.

Windows, Windows Vista and DirectSound are registered trademarks of Microsoft Corporation in the United States and/or other countries.

All other trade marks are the property of their respective owners and use of them does not imply any affiliation with or endorsement by them.

Document authored by: Native Instruments GmbH

Software version: 2.5.0 (07/2012)

Special thanks to the Beta Test Team, who were invaluable not just in tracking down bugs, but in making this a better product.

Germany

Native Instruments GmbH
Schlesische Str. 29-30
D-10997 Berlin
Germany
www.native-instruments.de

USA

Native Instruments North America, Inc.
6725 Sunset Boulevard
5th Floor
Los Angeles, CA 90028
USA
www.native-instruments.com



© Native Instruments GmbH, 2012. All rights reserved.

Table of Contents

1	Welcome	8
1.1	About this Setup Guide	8
1.2	Document Conventions	8
1.3	What Is Included In the Box?	9
1.4	Hardware Requirements	9
1.5	Overview of Setups	10
2	Setup A: Audio Interface – DJ Mixer – Turntables	14
2.1	Connecting the Audio Interface to Your DJ Mixer	15
2.2	Connecting Headphones to Your DJ Mixer	17
2.3	Connecting an Amplification System to Your DJ Mixer	18
2.4	Connecting Turntables to Your Audio Interface	19
2.4.1	Connect the Left Turntable (L)	20
2.4.2	Connect the Right Turntable (R)	21
2.5	Connecting CD Players to Your Audio Interface	23
2.5.1	Connect the Left CD Player (L)	23
2.5.2	Connect the Right CD Player (R)	24
3	Setup B: Certified Mixer – Turntables	25
3.1	Connecting Headphones to Your Certified Mixer	26
3.2	Connecting an Amplification System to Your Certified Mixer	27
3.3	Connecting Turntables to your Certified Mixer	27
3.3.1	Connect the Left Turntable (L)	28
3.3.2	Connect the Right Turntable (R)	29
3.4	Connecting CD Players to your Certified Mixer	31
3.4.1	Connect the Left CD Player (L)	31
3.4.2	Connect the Right CD Player (R)	32

4	Setup C: TRAKTOR KONTROL S4 – Turntables	33
4.1	Connecting Headphones	34
4.2	Connecting an Amplification System	35
4.3	Connecting Turntables	37
4.3.1	Connect the Left Turntable (L)	38
4.3.2	Connect the Right Turntable (R)	40
4.4	Connecting CD Players	43
4.4.1	Connect the Left CD Player (L)	43
4.4.2	Connect the Right CD Player (R)	44
5	Software Installation	46
5.1	Installation on Mac OS X	46
5.1.1	Locate and Start the Installation Program	46
5.1.2	Select the Components to Install	46
5.1.3	Enter Your Password	49
5.1.4	Complete the Installation	49
5.2	Installation on Windows	51
5.2.1	Locate and Start the Installation Program	51
5.2.2	Confirm the Features to Install	51
5.2.3	Confirm the Application Installation Path	53
5.2.4	Select Your Hardware Drivers	54
5.2.5	Complete the Software Installation	54
6	Product Activation	56
6.1	Activating Your Product Online	56
6.1.1	Start Service Center	56
6.1.2	Log In Into Your User Account	57
6.1.3	Activate the Product	58
6.1.4	Finish the Online Activation	59
6.2	Updating Your Product	60

6.2.1	Select Updates	60
6.2.2	Download the Updates	61
6.2.3	Open Your Download Folder	62
6.2.4	Install Updates	63
6.3	Activating Your Product Offline	63
6.3.1	Start the Offline Activation	64
6.3.2	Create the Activation Request File	65
6.3.3	Enter the Serial Number	66
6.3.4	Transfer the Activation Request File	67
6.3.5	Open the Activation Return File	68
6.3.6	Finish the Offline Activation	69
7	Final Preparations	71
7.1	Connect Your Hardware to Your Computer	71
7.2	Put On a Control Vinyl or Insert a Control CD	71
7.3	Switch On Your Devices	71
7.4	Start the TRAKTOR Software	72
7.5	Using the Setup Wizard to Configure Your TRAKTOR SCRATCH PRO System	73
7.5.1	Select your Hardware	74
7.5.2	Select a Deck Setup	75
7.5.3	Check the Setup	76
7.6	Enabling TRAKTOR's Decks	78
7.7	Calibrating TRAKTOR for Timecode Control	82
8	Upgrade from Earlier TRAKTOR SCRATCH PRO / DUO Systems	84
8.1	Backup	84
8.2	Software Installation	85
8.3	Importing Your Data	85
9	Documentation Resources	86
9.1	PDF Manuals	86

9.2	Video Tutorials	86
10	Support	87
10.1	Knowledge Base / Readme / Online Support	87
10.2	Forum	88
10.3	Updates	88
11	Troubleshooting and FAQ	89
11.1	Installation Folder Not Found by an Update Installer	89
11.2	User Account Control and Internet Security	89
11.3	Audio Clicks and Drop-outs When Playing Tracks	90
11.4	More Troubleshooting Resources	90

1 Welcome

Thank you for buying the TRAKTOR SCRATCH PRO 2 SOFTWARE & TIMECODE KIT! This product upgrades your bundled TRAKTOR software to a TRAKTOR SCRATCH PRO 2 version. Additionally, the timecode media provided with this kit enable you to control TRAKTOR via turntables / CD players, which makes your DJ setup a fully functional TRAKTOR SCRATCH PRO system!

1.1 About this Setup Guide

This document provides instructions for setting up TRAKTOR SCRATCH PRO 2 in combination with various NI audio interfaces, NI controllers, and TRAKTOR SCRATCH Certified mixers using the TRAKTOR SCRATCH PRO 2 SOFTWARE & TIMECODE KIT. After reading it, you will be able to start using TRAKTOR SCRATCH PRO 2 with your specific hardware setup.

1.2 Document Conventions

This section introduces you to the signage and text highlighting used in this document. This document uses particular formatting to point out special facts and to warn you of potential issues. The icons introducing these notes let you see what kind of information is to be expected:



Whenever this exclamation mark icon appears, you should read the corresponding note carefully and follow the instructions and hints given there if applicable.



This light bulb icon indicates that a note contains useful extra information. This information may often help you to solve a task more efficiently, but does not necessarily apply to the setup or operating system you are using; however, it's always worth a look.

Furthermore, the following formatting is used:

- Text appearing in (drop-down) menus (such as *Open...*, *Save as...* etc.) and paths to locations on your hard drive or other storage devices is printed in *italics*.

- Text appearing elsewhere (labels of buttons, controls, text next to checkboxes etc.) is printed in **blue**. Whenever you see this formatting applied, you will find the same text appearing somewhere on the screen.
 - Important names and concepts are printed in **bold**.
 - References to keys on your computer's keyboard you'll find put in square brackets (e.g., "Press [Shift] + [Return]").
- Single instructions are introduced by this play button type arrow.
- Results of actions are introduced by this smaller arrow.

Naming Conventions

Due to the diversity of supported audio interfaces, this document provides generic instructions where applicable, so the generic term "audio interface" will be used throughout. The specific devices will be addressed individually where necessary.

1.3 What Is Included In the Box?

The TRAKTOR SCRATCH PRO 2 SOFTWARE & TIMECODE KIT contains the following items:

- A DVD with the TRAKTOR SCRATCH PRO 2 software installer
- A registration flyer with your TRAKTOR SCRATCH PRO 2 software serial number
- Two Control Vinyls
- Two Control CDs
- A TRAKTOR sticker sheet

1.4 Hardware Requirements

For setting up a TRAKTOR SCRATCH PRO system using this kit, you need a TRAKTOR-supported (NI) **audio interface**, a **TRAKTOR SCRATCH Certified Mixer**, or a **TRAKTOR KONTROL S4** controller (and turntables or DJ CD players).

- The following audio interfaces from Native Instruments are supported:
- Audio 4 DJ
- Audio 8 DJ
- TRAKTOR Audio 6
- TRAKTOR Audio 10

If you want to use a TRAKTOR SCRATCH Certified Mixer, it must come with this certification:



TRAKTOR SCRATCH CERTIFIED logo.



Third party audio interfaces and mixers without this certification are not supported and will not work with the TRAKTOR SCRATCH PRO 2 SOFTWARE & TIMECODE KIT.

Depending on your desired setup, the following DJ equipment is needed:

- Two turntables (or two CD players)
- a pair of headphones
- an amplification system
- a DJ mixer (if using an audio interface)
- one pair of RCA cables (if using a Certified Mixer)
- two pairs of RCA cables (if using an audio interface and a DJ mixer)

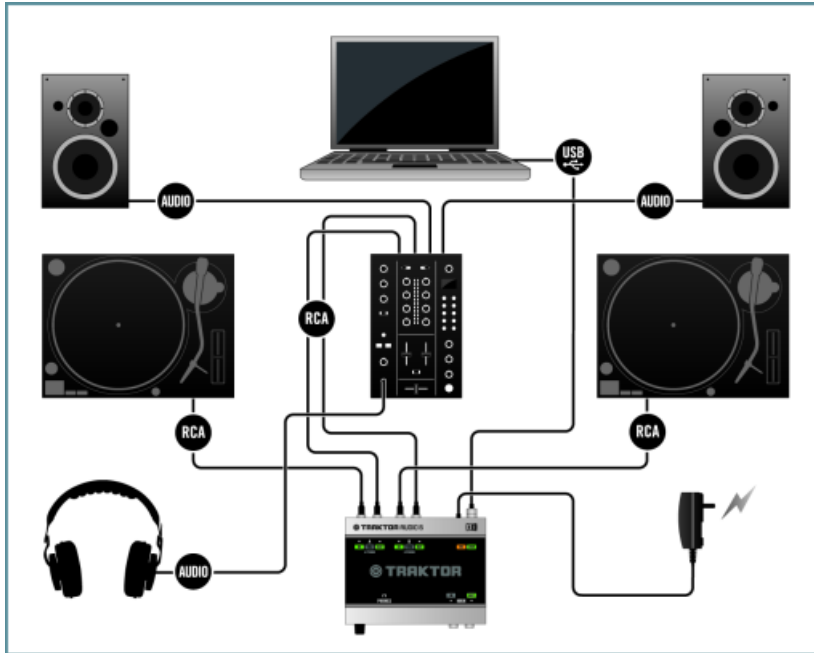
1.5 Overview of Setups

This section provides an overview of the various setup and upgrade scenarios as further explained in the subsequent chapters.

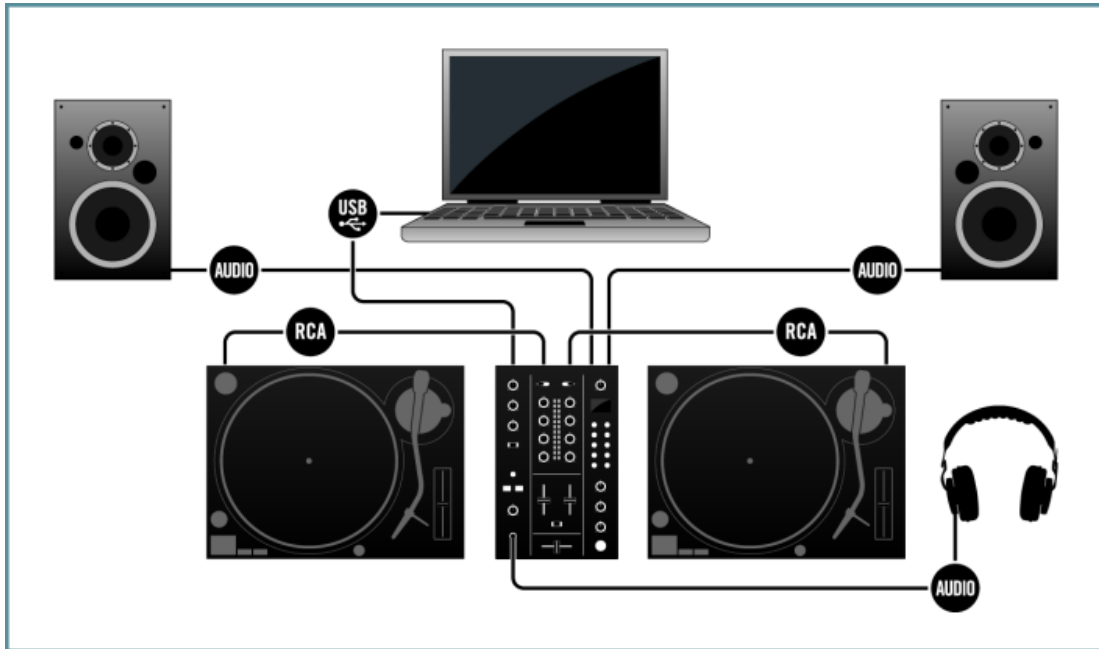


Whenever referring to turntables, the setup also applies to CD players.

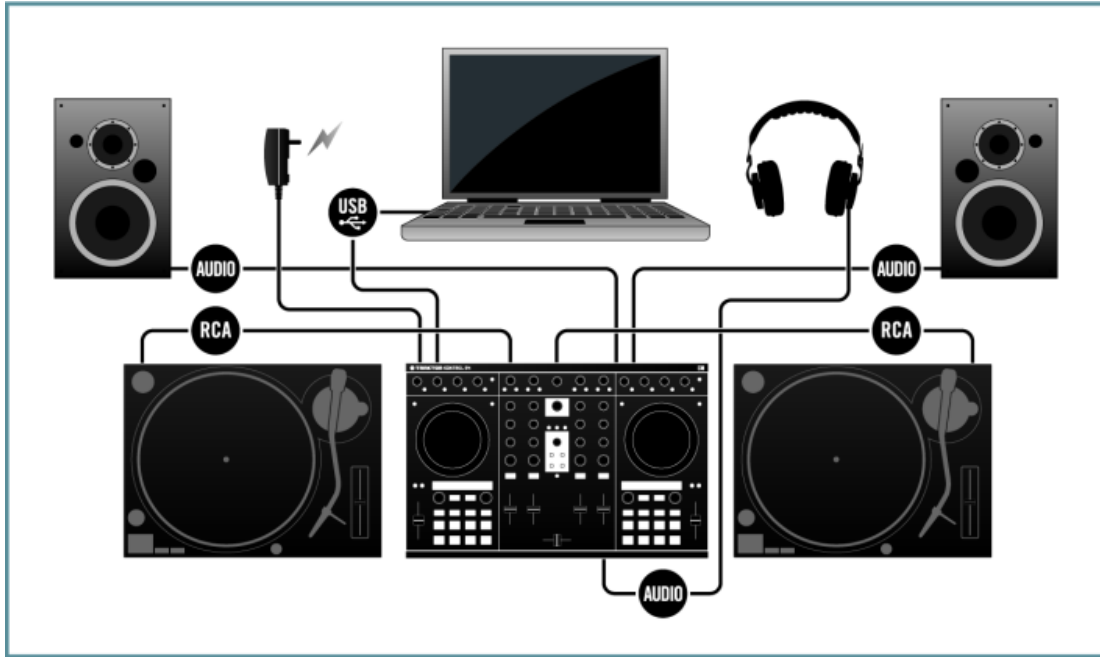
- [↑2, Setup A: Audio Interface – DJ Mixer – Turntables](#): This chapter explains how to connect a DJ mixer and two turntables to your audio interface. This is the common digital DJing setup, including an audio interface for streaming the timecode signal from the Control Vinyls into your computer.



- [↑3, Setup B: Certified Mixer – Turntables](#): This chapter explains how to connect your TRAKTOR Certified Mixer with two turntables. Your Certified Mixer also acts as audio interface and streams the timecode signal from the Control Vinyls into your computer.



- [↑4, Setup C: TRAKTOR KONTROL S4 – Turntables](#): This chapter explains how to connect two turntables to your TRAKTOR KONTROL S4. The controller acts as audio interface and streams the timecode signal from the Control Vinyls into your computer.



- [↑8, Upgrade from Earlier TRAKTOR SCRATCH PRO / DUO Systems](#): It is also possible to upgrade former versions to TRAKTOR SCRATCH PRO 2 without any change of the running hardware system. The following products can be upgraded:
 - TRAKTOR SCRATCH PRO (AUDIO 8 DJ incl. Multicore Cables)
 - TRAKTOR SCRATCH DUO (AUDIO 4 DJ incl. Multicore Cables)

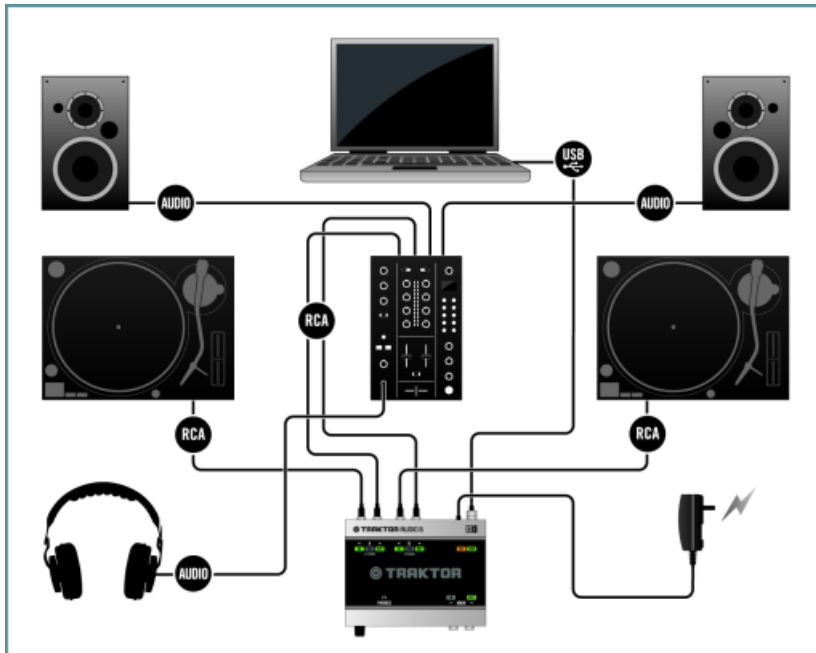
2 Setup A: Audio Interface – DJ Mixer – Turntables

This chapter explains how to connect a DJ mixer and two turntables or CD players to your audio interface. This is the common digital DJing setup, including an audio interface for streaming the timecode signal from the Control Vinyls/CDs into your computer.



The following description for setting up the TRAKTOR SCRATCH PRO 2 setup is explained using the TRAKTOR AUDIO 6 audio interface. This description is also valid for the TRAKTOR AUDIO 10, the AUDIO 4 DJ, and the AUDIO 8 DJ.

See an overview of the possible setup below.



Setup A: Audio interface – DJ mixer – turntables.



The DC power supply is not mandatory for operating the TRAKTOR AUDIO 6 (if not operated without a computer), but it is for the TRAKTOR AUDIO 10. The AUDIO 4 DJ and the AUDIO 8 DJ do not use a power supply at all.



In case you use a TRAKTOR AUDIO 10, we assume that you have already connected it to a power outlet via its DC power supply. For further information please read the manual of your TRAKTOR AUDIO 10.

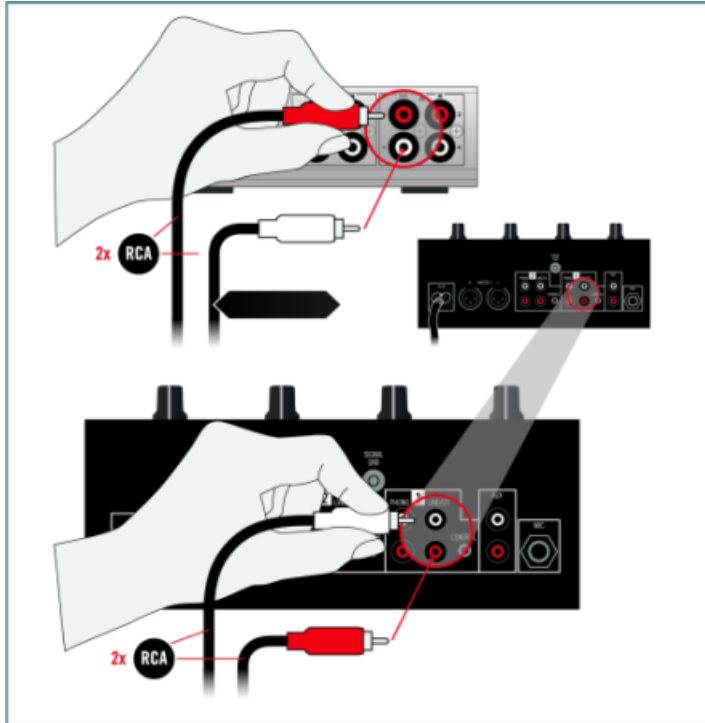
2.1 Connecting the Audio Interface to Your DJ Mixer

In order to play back and mix your tracks using TRAKTOR, you need to connect a DJ mixer to the audio interface. Before you proceed:

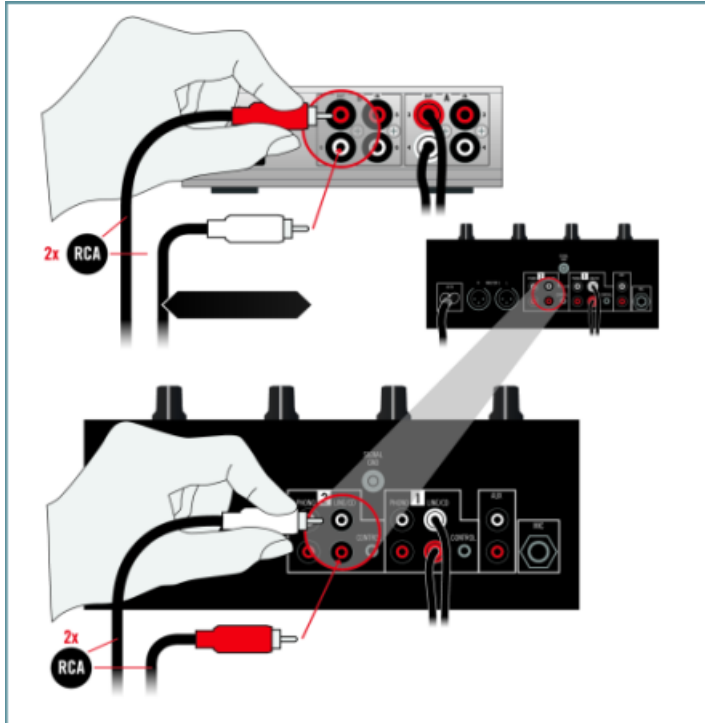
- We assume you have not yet connected your audio interface to your computer.
- We also assume that you have connected your DJ mixer to a power outlet, but did not switch it on yet. If your DJ mixer is switched on, switch it off before proceeding.
- Your DJ mixer may look different from the model depicted here, and it may have different connectors and controls. If you need assistance with regard to the operation of your DJ mixer, please consult your DJ mixer's documentation.
- We assume that you have installed the hardware driver of your audio interface on your computer!

To connect your audio interface to your DJ mixer:

1. Connect the audio outputs of channel **A** (labeled OUT) on the rear panel of the audio interface to the inputs of a Line/CD channel on your DJ mixer, using one pair of the RCA cables.



2. Connect the audio outputs of channel **B** (labeled OUT) on the rear panel of the audio interface to the inputs of a Line/CD channel on your DJ mixer, using a second pair of RCA cables.

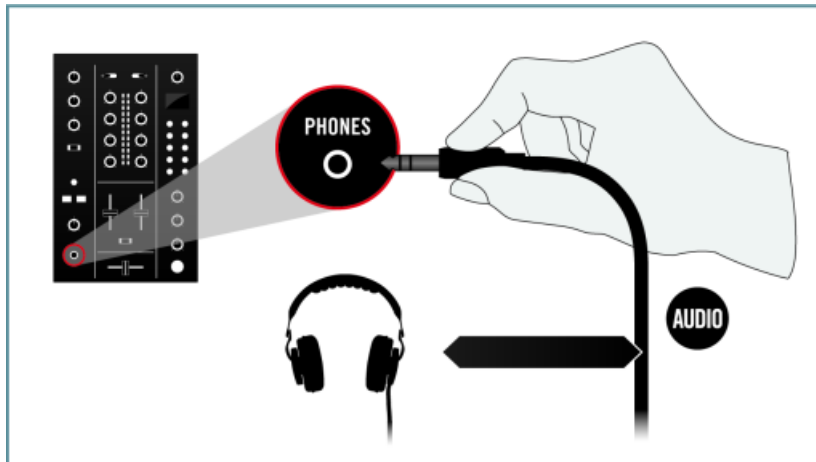


3. Switch the DJ mixer channels connected to the audio interface to Line input mode (in case of switchable input modes).

2.2 Connecting Headphones to Your DJ Mixer

To connect your headphones to your DJ mixer:

- ▶ Connect your headphones to the DJ mixer's headphones socket (most often labeled "Headphones" or "Phones").



Before putting on headphones, always make sure the headphone volume control is set to minimum! Later on, while music is playing, slowly increase the headphone volume until it reaches the desired listening level.

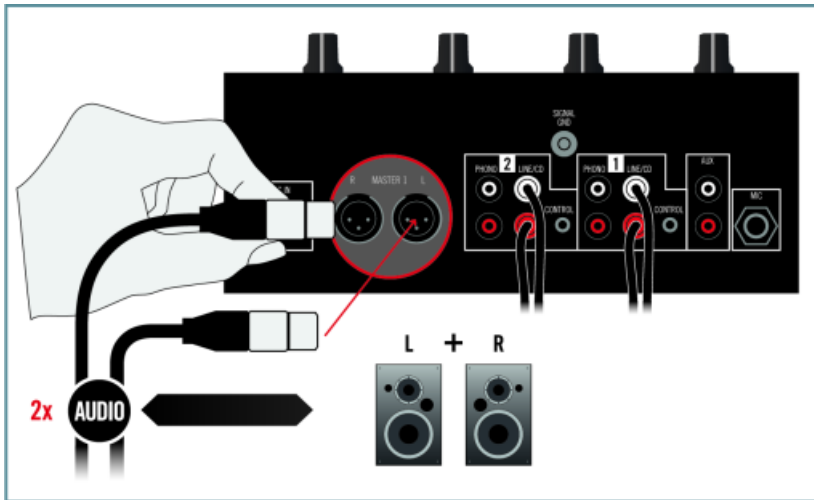
2.3 Connecting an Amplification System to Your DJ Mixer



Switch off your amplification system (active speakers or power amplifier) before you proceed.

To connect your amplification system (or active speakers) to your DJ mixer:

- Connect the Main (or Master) outputs of the DJ mixer to the inputs of the amplification system using matching cables.



2.4 Connecting Turntables to Your Audio Interface



If you want to use CD players instead of turntables, you can skip this chapter and continue reading in chapter [↑2.5, Connecting CD Players to Your Audio Interface](#).

If you want to use the specific Control Vinyls to control your tracks playing in TRAKTOR, you need to connect your turntables to the audio interface as described below. Before you start:

- We assume that, when viewed from the DJ's position, one turntable is placed on the left of your DJ mixer, while the other turntable is placed on the right. Therefore, in this Setup Guide, the left and right turntables are labeled L and R, respectively.
- We assume that you have already connected your turntables to power outlets, but did not switch them on yet. If your turntables are switched on, switch them off before proceeding.
- Some turntables offer line-level outputs or other connectors in addition to the standard phono outs. In this Setup Guide we assume that you are using the standard phono outputs to connect your turntable to the audio interface.

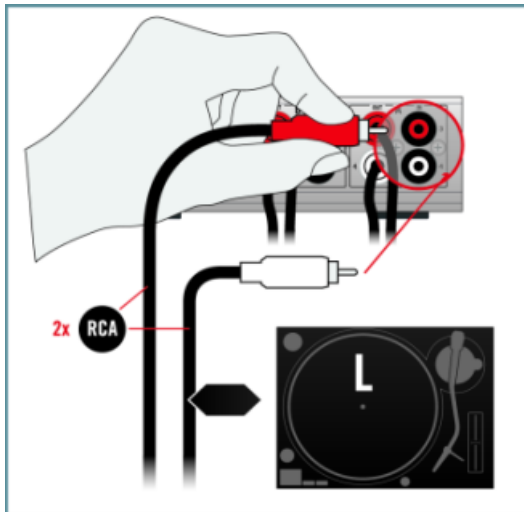
2.4.1 Connect the Left Turntable (L)



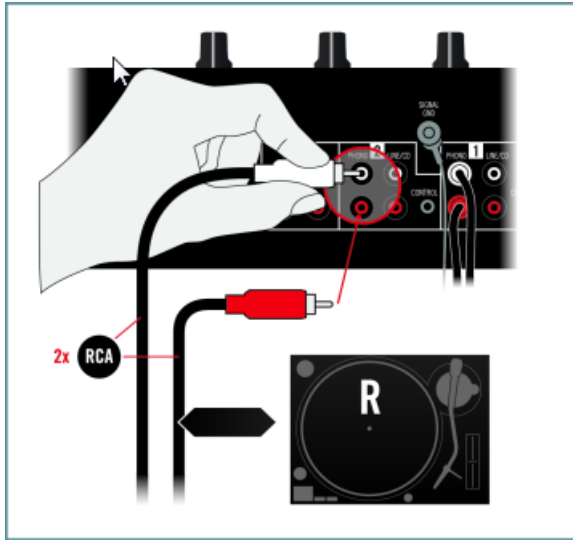
On most turntables, the audio cables and ground wire are inseparably connected to the device.

To connect the left turntable:

1. Connect the left and right audio output cables of the left turntable (L) to **inputs A** on the back panel of the audio interface.



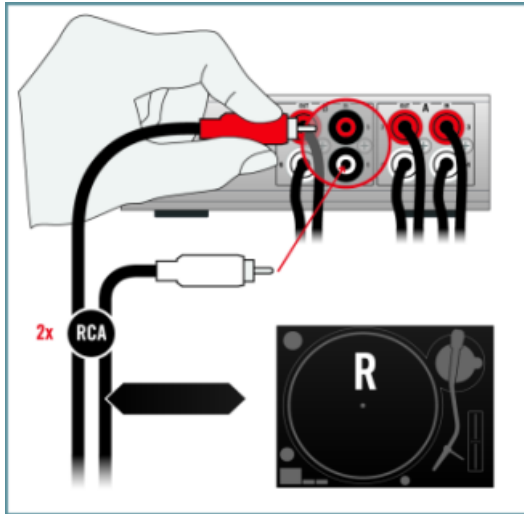
2. Attach the ground wire of turntable L to the ground screw on the DJ mixer.



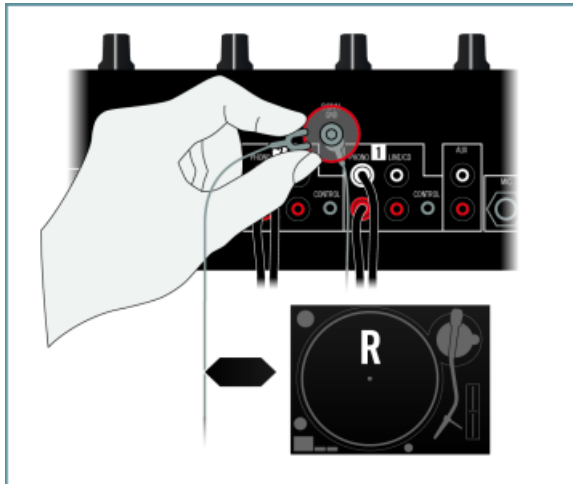
2.4.2 Connect the Right Turntable (R)

To connect the right turntable:

1. Connect the left and right audio output cables of the right turntable (R) to **inputs B** on the back panel of the audio interface.



2. Attach the ground wire of turntable R to the ground screw on the DJ mixer.



You can connect both ground wires to the same ground screw.

→ Your TRAKTOR SCRATCH PRO 2 hardware setup is complete.

- Proceed with the TRAKTOR software installation in chapter [↑5, Software Installation](#).

2.5 Connecting CD Players to Your Audio Interface

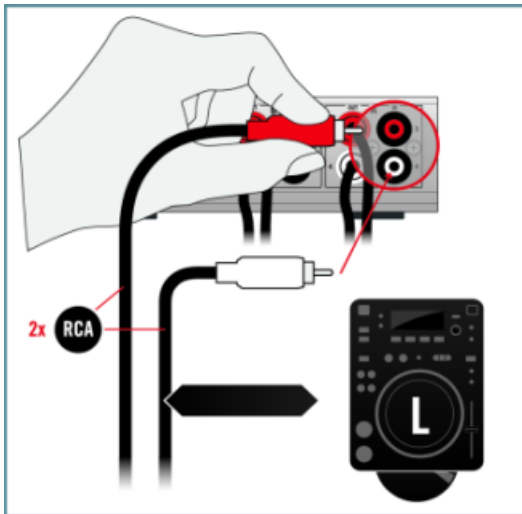
If you want to use the specific Control CDs to control your tracks playing in TRAKTOR, you need to connect your CD players to the audio interface as described below. Before you proceed:

- We assume that, when viewed from the DJ's position, one CD player is placed on the left of your DJ mixer, while the other CD player is placed on the right. Therefore, in this Setup Guide, the left and right CD players are labeled L and R, respectively.
- We assume that you have already connected your CD players to power outlets, but did not switch them on yet. If your turntables are switched on, switch them off before proceeding.

2.5.1 Connect the Left CD Player (L)

To connect the left CD player:

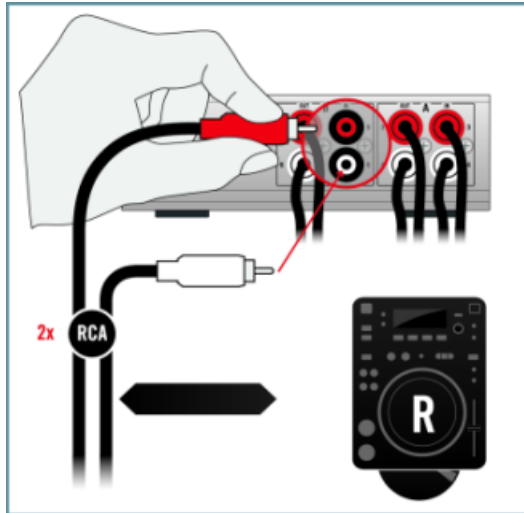
- Connect the left and right audio output sockets on the left CD player (L) to **inputs A** on the back panel of the audio interface.



2.5.2 Connect the Right CD Player (R)

To connect the right CD player:

- ▶ Connect the left and right audio output cables of the right CD player (R) to **inputs B** on the back panel of the audio interface.



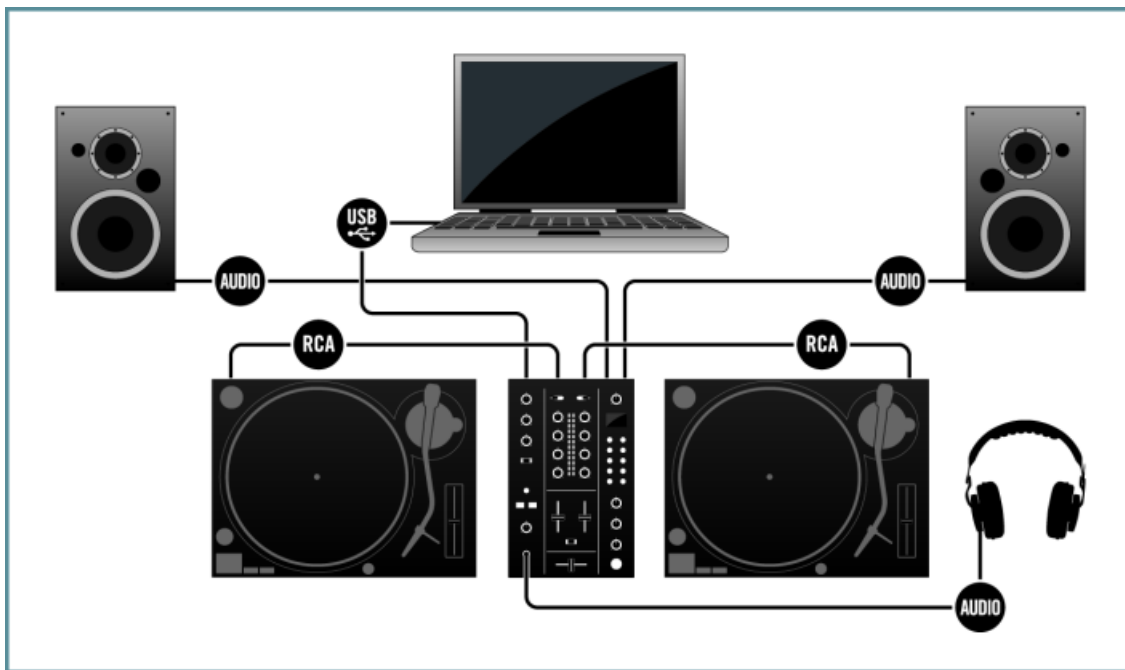
→ Your TRAKTOR SCRATCH PRO 2 hardware setup is complete.

- ▶ Proceed with the TRAKTOR software installation in chapter [↑5, Software Installation](#).

3 Setup B: Certified Mixer – Turntables

This chapter explains how to connect your TRAKTOR Certified Mixer with two turntables or CD players. Your Certified Mixer also acts as the audio interface and streams the timecode signal from the Control Vinyls/CDs into your computer.

The picture below shows the overview of the Certified Mixer – turntables setup.



Setup B: Certified Mixer – turntables.

In order to play back and mix your tracks using TRAKTOR SCRATCH PRO 2, you need to connect your Certified Mixer to your turntables. Before you proceed:

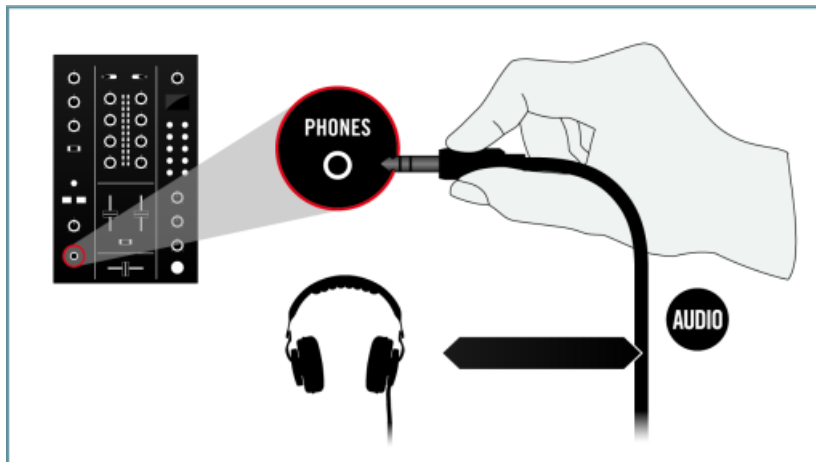
- We assume that you have already connected your certified mixer to a power outlet, but did not switch it on yet. If your Certified Mixer is switched on, switch it off before proceeding.
- We also assume that you have not yet connected your Certified Mixer to your computer.

- Your Certified Mixer may look different from the model depicted here, and may have different connectors and controls. If you need assistance with regard to the operation of your mixer, please consult your Certified Mixer's documentation.
- Make sure that you have installed the hardware driver of your Certified Mixer on your computer!

3.1 Connecting Headphones to Your Certified Mixer

To connect headphones to your mixer:

- ▶ Connect your headphones to your Certified Mixer's headphones socket (most often labeled "Headphones" or "Phones").



Before putting on headphones, always make sure the headphone volume control is set to minimum! Later on, while music is playing, slowly increase the headphone volume until it reaches the desired listening level.

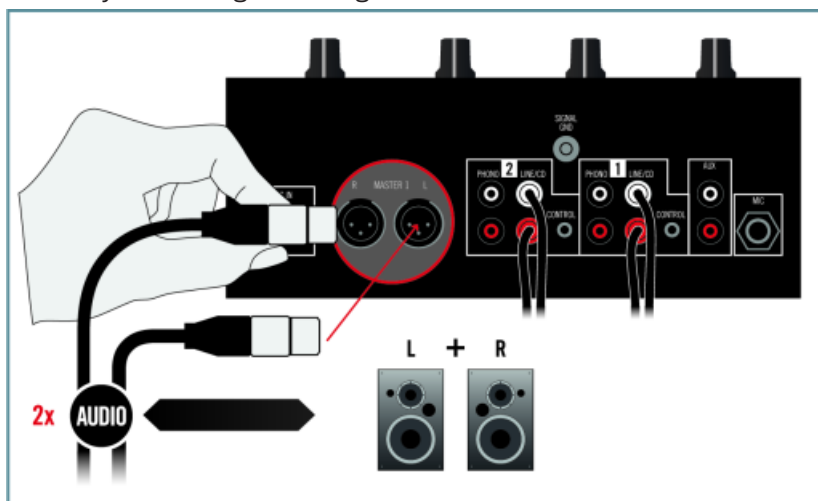
3.2 Connecting an Amplification System to Your Certified Mixer



Switch off your amplification system (active speakers or power amplifier) before you proceed.

To connect the amplification system (or active speakers) to your system:

- Connect the Main (or Master) outputs of your Certified Mixer to the inputs of your amplification system using matching cables.



3.3 Connecting Turntables to your Certified Mixer



If you want to use CD players instead of turntables, you can skip this chapter and continue reading in chapter [13.4, Connecting CD Players to your Certified Mixer](#).

If you want to use the specific Control Vinyls to control your tracks playing in TRAKTOR, you need to connect your turntables to the Certified Mixer as described below. Before you proceed:

- We assume that, when viewed from the DJ's position, one turntable is placed on the left of your Certified Mixer, while the other turntable is placed on the right. Therefore, in this Setup Guide, the left and right turntables are labeled L and R, respectively.
- We assume that you have already connected your turntables to power outlets, but did not switch them on yet. If your turntables are switched on, switch them off before proceeding.
- Some turntables offer line-level outputs or other connectors in addition to the standard phono outs. In this Setup Guide we assume that you are using the standard phono outputs to connect your turntable to the mixer.

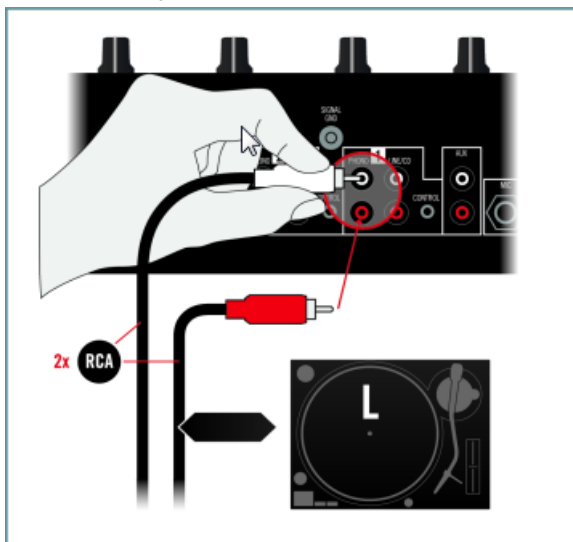
3.3.1 Connect the Left Turntable (L)



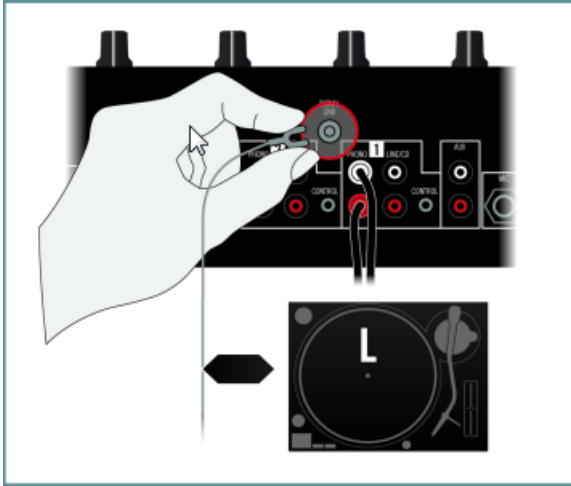
On most turntables, the audio cables and ground wire are inseparably connected to the device.

To connect the left turntable:

1. Connect the left and right audio output cables of the left turntable (L) to **inputs A or CH1** on the back panel of the Certified Mixer.



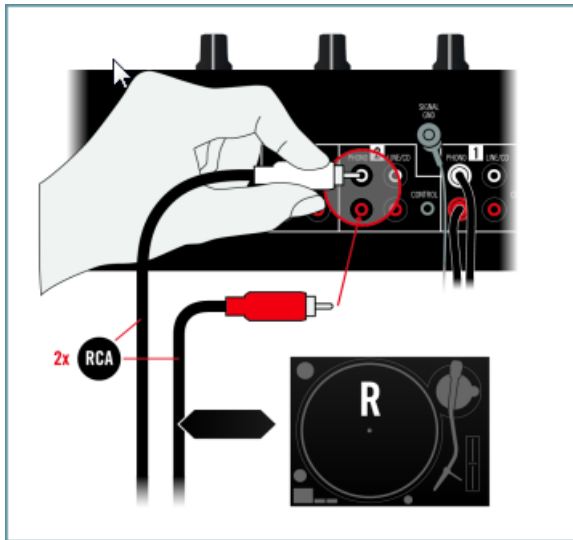
2. Attach the ground wire of turntable L to the ground screw on the Certified Mixer.



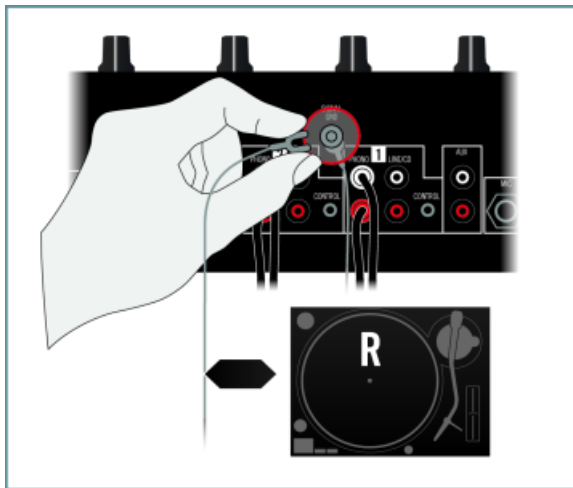
3.3.2 Connect the Right Turntable (R)

To connect the right turntable:

1. Connect the left and right audio output cables of the right turntable (R) to **inputs B or CH2** on the back panel of the Certified Mixer.



2. Attach the ground wire of turntable R to the ground screw on the Certified Mixer.



You can connect both ground wires to the same ground screw.

→ Your TRAKTOR SCRATCH PRO 2 hardware setup is complete.

- Proceed with the TRAKTOR software installation in chapter [↑5, Software Installation](#).

3.4 Connecting CD Players to your Certified Mixer

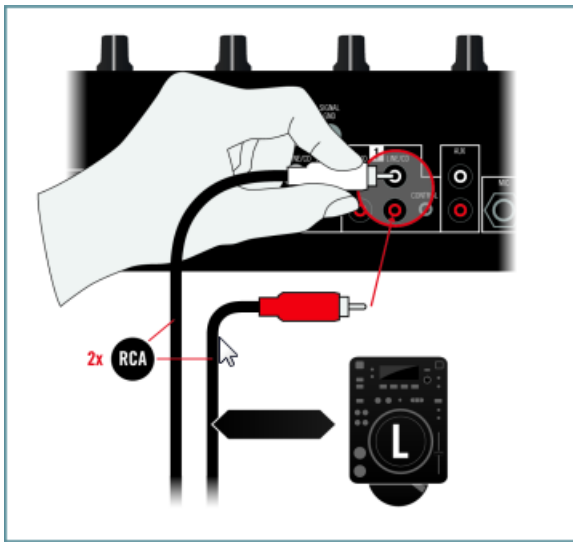
If you want to use the specific Control CDs to control your tracks playing in TRAKTOR, you need to connect your CD players to the Certified Mixer as described below. Before you proceed:

- We assume that, when viewed from the DJ's position, one CD player is placed on the left of your mixer, while the other CD player is placed on the right. Therefore, in this Setup Guide, the left and right CD players are labeled L and R, respectively.
- We assume that you have already connected your CD players to power outlets, but did not switch them on yet. If your turntables are switched on, switch them off before proceeding.

3.4.1 Connect the Left CD Player (L)

To connect the left CD player:

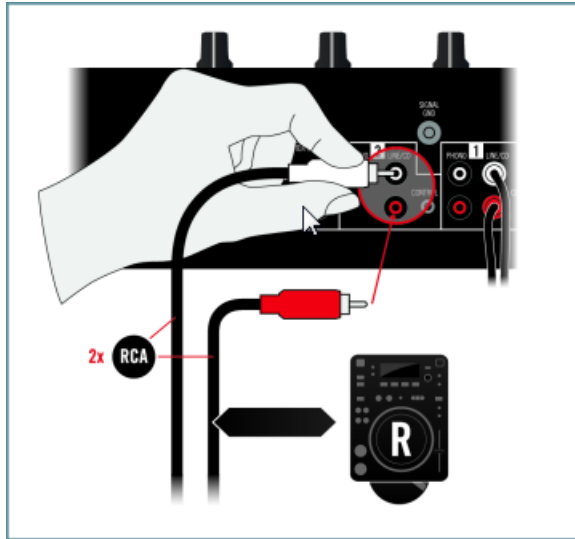
- Connect the left and right audio output sockets on the left CD player (L) to **inputs A or CH1** on the back panel of the certified mixer.



3.4.2 Connect the Right CD Player (R)

To connect the right CD player:

- ▶ Connect the left and right audio output cables of the right CD player (R) to **inputs B or CH2** on the back panel of the certified mixer.



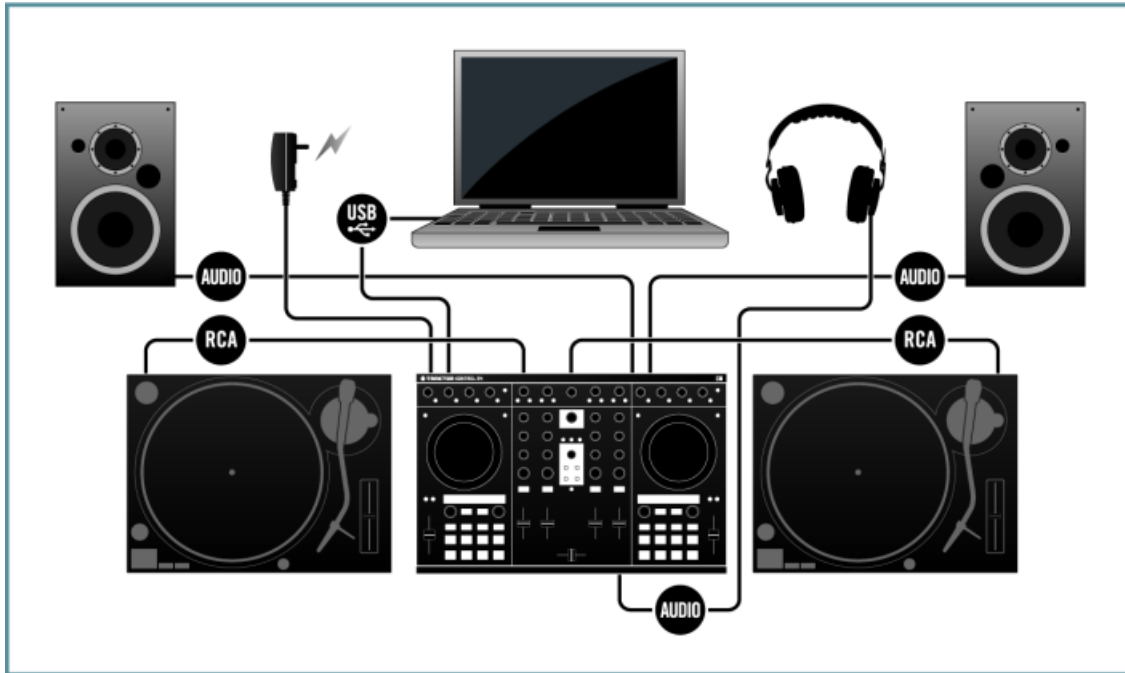
→ Your TRAKTOR SCRATCH PRO 2 hardware setup is complete.

- ▶ Proceed with the TRAKTOR software installation in chapter [↑5, Software Installation](#).

4 Setup C: TRAKTOR KONTROL S4 – Turntables

This chapter explains how you connect your TRAKTOR KONTROL S4 with two turntables or CD players. In the end, you will have a DJ setup where the KONTROL S4 acts as audio interface and streams the timecode signal from the Control Vinyls or Control CDs into your computer.

The picture below shows the overview of the TRAKTOR KONTROL S4 – turntables setup.



Setup C: TRAKTOR KONTROL S4 – turntables.

Before you proceed:

- We assume that you have already connected your TRAKTOR KONTROL S4 to a power outlet. For further information or instructions please read the manual of your TRAKTOR KONTROL S4.

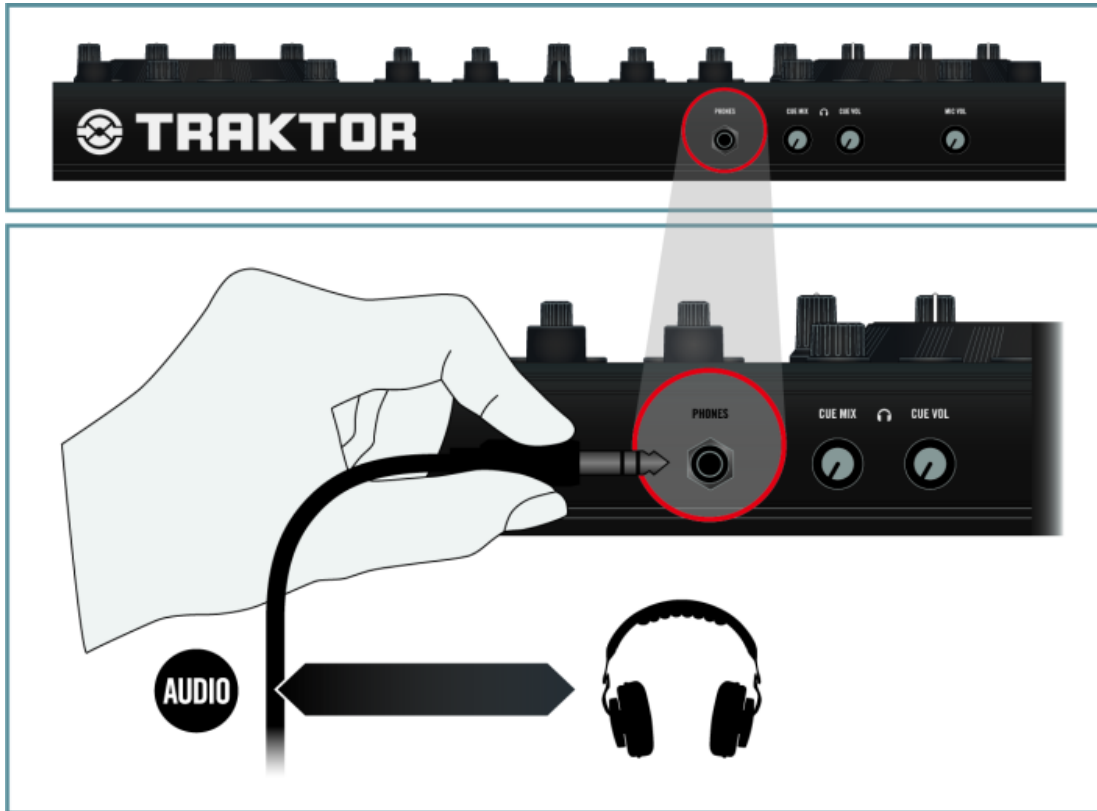
- We also assume that you have not yet connected your TRAKTOR KONTROL S4 to your computer.
- ▶ Make sure that you have installed the TRAKTOR KONTROL S4 hardware driver before you connect the controller to your computer!
- ▶ Attach the TRAKTOR KONTROL S4 controller directly to a USB 2.0 port on your computer. If connected to a USB hub, the device may not work correctly!

4.1 Connecting Headphones

To connect headphones:

1. Turn the CUE VOL control knob on the front panel to the left end stop to set the output volume to minimum.

2. Connect your headphones to the headphones socket (PHONES).



With DC power unplugged and USB connected, the controller will already transmit a signal to the main and headphone outputs. Be aware that plugging in DC power will boost the controller's headphone output signal significantly. It is therefore strongly advised to adjust the output level with DC power plugged in.

4.2 Connecting an Amplification System

Switch off your amplification system (active speakers or power amplifier) before you proceed.

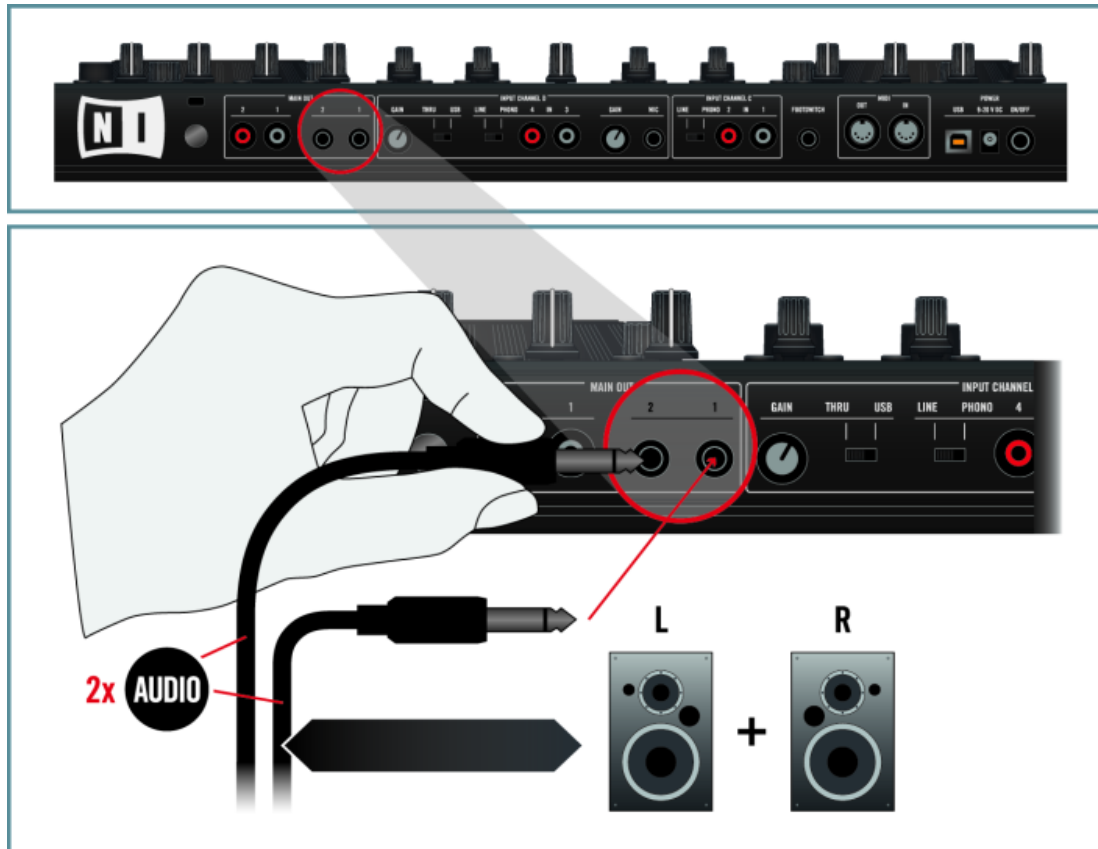
To connect the amplification system (or active speakers):

1. On the top panel of the S4, turn the MAIN LEVEL knob fully counter-clockwise.



2. Connect Main Output socket 1 (MAIN 1) on the rear panel of your TRAKTOR KONTROL S4 controller to the left channel of your amplification system and Main Output 2 (MAIN 2) to the right channel. Depending on the connector types your amplification sys-

tem is equipped with, you can choose to connect it to either the RCA (unbalanced), or 1/4" (balanced) output sockets on the S4.



4.3 Connecting Turntables



If you want to use CD players instead of turntables, you can skip this chapter and continue reading in chapter [4.4, Connecting CD Players](#).

If you want to use the specific Control Vinyls to control your tracks playing in TRAKTOR, you need to connect your turntables to the TRAKTOR KONTROL S4 as described below. Before you proceed:

- We assume that, when viewed from the DJ's position, one turntable is placed on the left of TRAKTOR KONTROL S4, while the other turntable is placed on the right. Therefore, in this Setup Guide, the left and right turntables are labeled L and R, respectively.
- We assume that you have already connected your turntables to power outlets, but did not switch them on yet. If your turntables are switched on, switch them off before proceeding.
- Some turntables offer line-level outputs or other connectors in addition to the standard phono outs. In this Setup Guide we assume that you are using the standard phono outputs to connect your turntable to the TRAKTOR KONTROL S4.

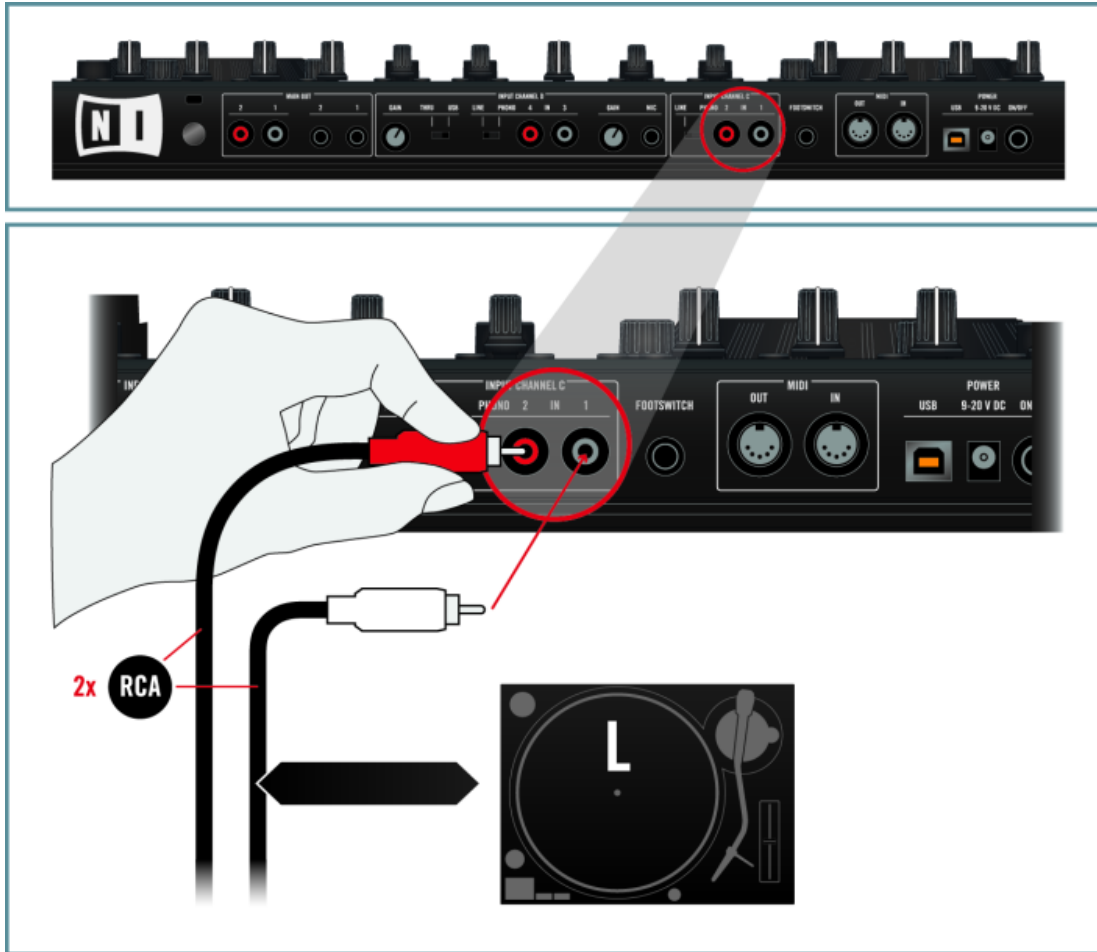
4.3.1 Connect the Left Turntable (L)



On most turntables the audio cables and ground wire are inseparably connected to the device.

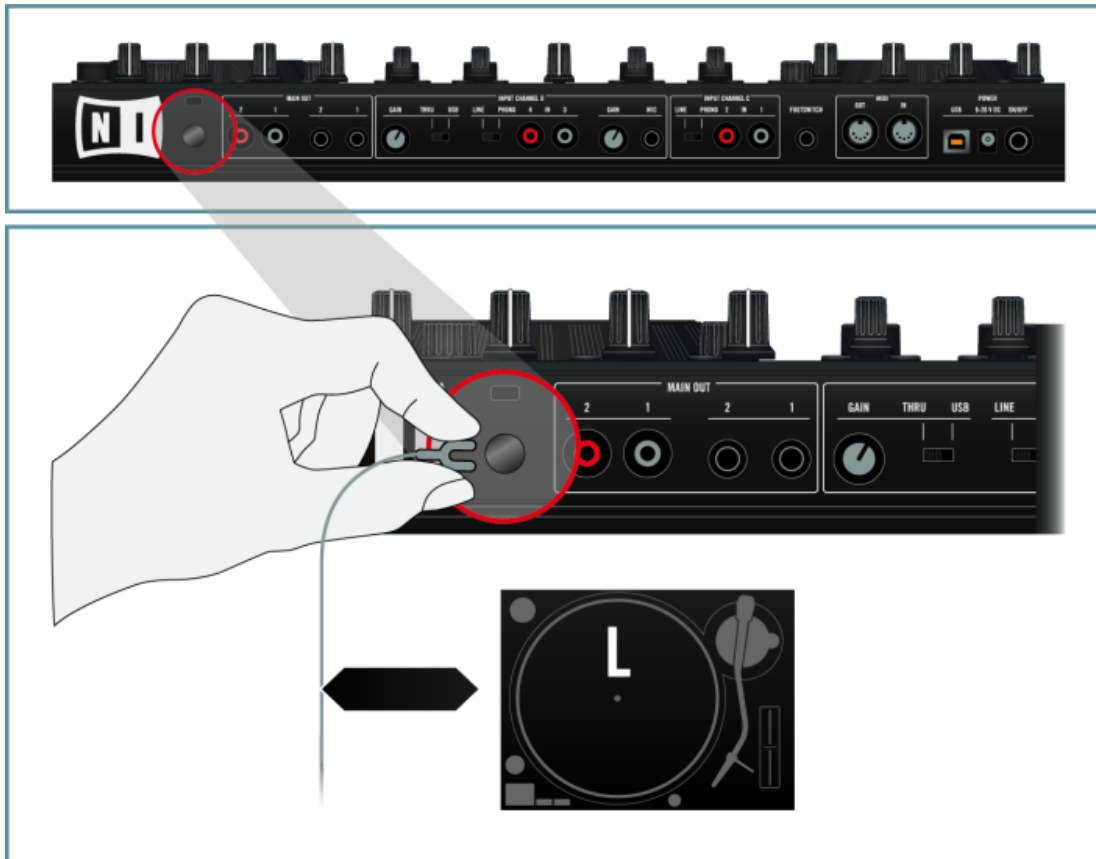
To connect the left turntable:

1. Connect the left and right audio output cables of the left turntable (L) to **input Channel C** on the back panel of the TRAKTOR KONTROL S4.



2. Set the LINE/PHONO switch to phono.

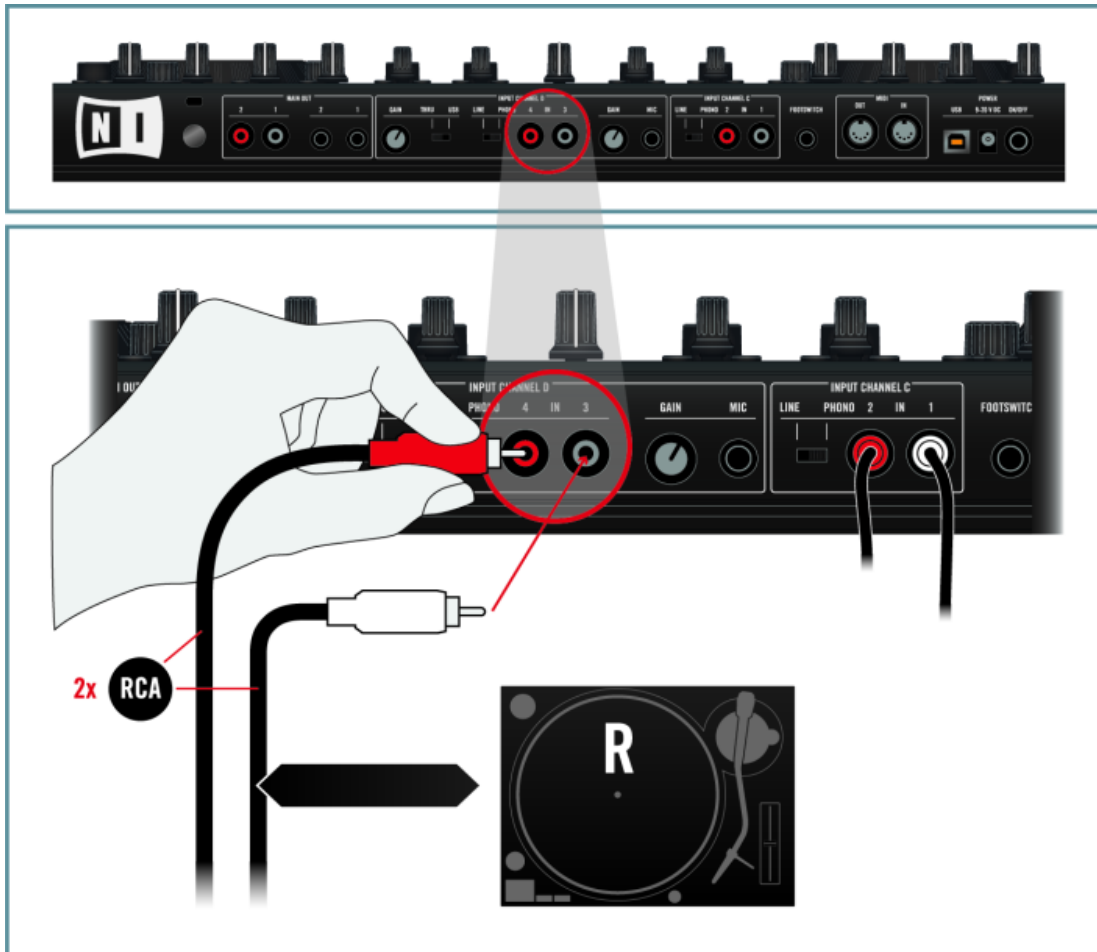
3. Attach the ground wire of turntable L to the ground screw on the TRAKTOR KONTROL S4.



4.3.2 Connect the Right Turntable (R)

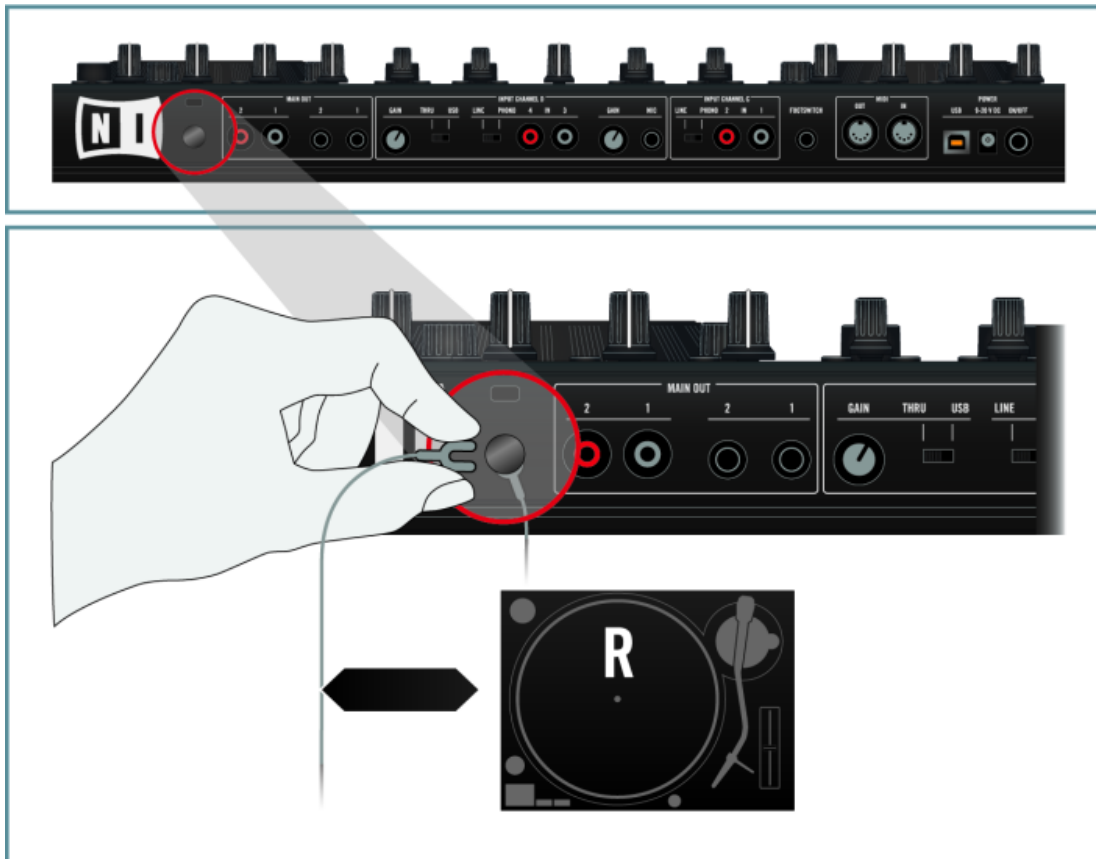
To connect the right turntable:

1. Connect the left and right audio output cables of the right turntable (R) to **input Channel D** on the back panel of the TRAKTOR KONTROL S4.



2. Set the LINE/PHONO switch to phono.

3. Attach the ground wire of turntable R to the ground screw on the TRAKTOR KONTROL S4.



You can connect both ground wires to the same ground screw.

→ Your TRAKTOR SCRATCH PRO 2 hardware setup is complete.

► Proceed with the TRAKTOR software installation in chapter [↑5, Software Installation](#).

4.4 Connecting CD Players

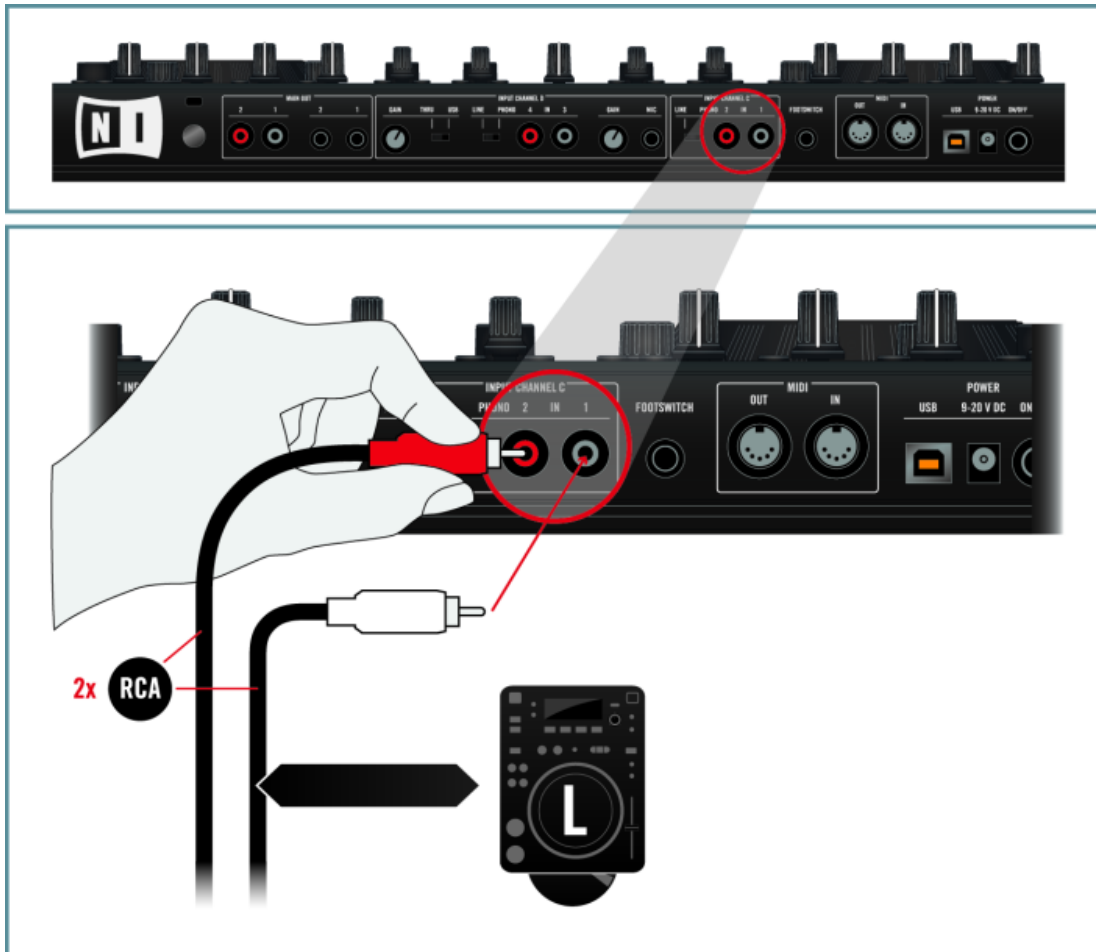
If you want to use the specific Control CDs to control your tracks playing in TRAKTOR, you need to connect your CD players to the TRAKTOR KONTROL S4 as described below. Before you proceed:

- We assume that, when viewed from the DJ's position, one CD player is placed on the left of your TRAKTOR KONTROL S4, while the other CD player is placed on the right. Therefore, in this Setup Guide, the left and right CD players are labeled L and R, respectively.
- We assume that you have already connected your CD players to power outlets, but did not switch them on yet. If your turntables are switched on, switch them off before proceeding.

4.4.1 Connect the Left CD Player (L)

To connect the left CD player:

1. Connect the left and right audio output sockets on the left CD player (L) to **input Channel C** on the back panel of the TRAKTOR KONTROL S4.

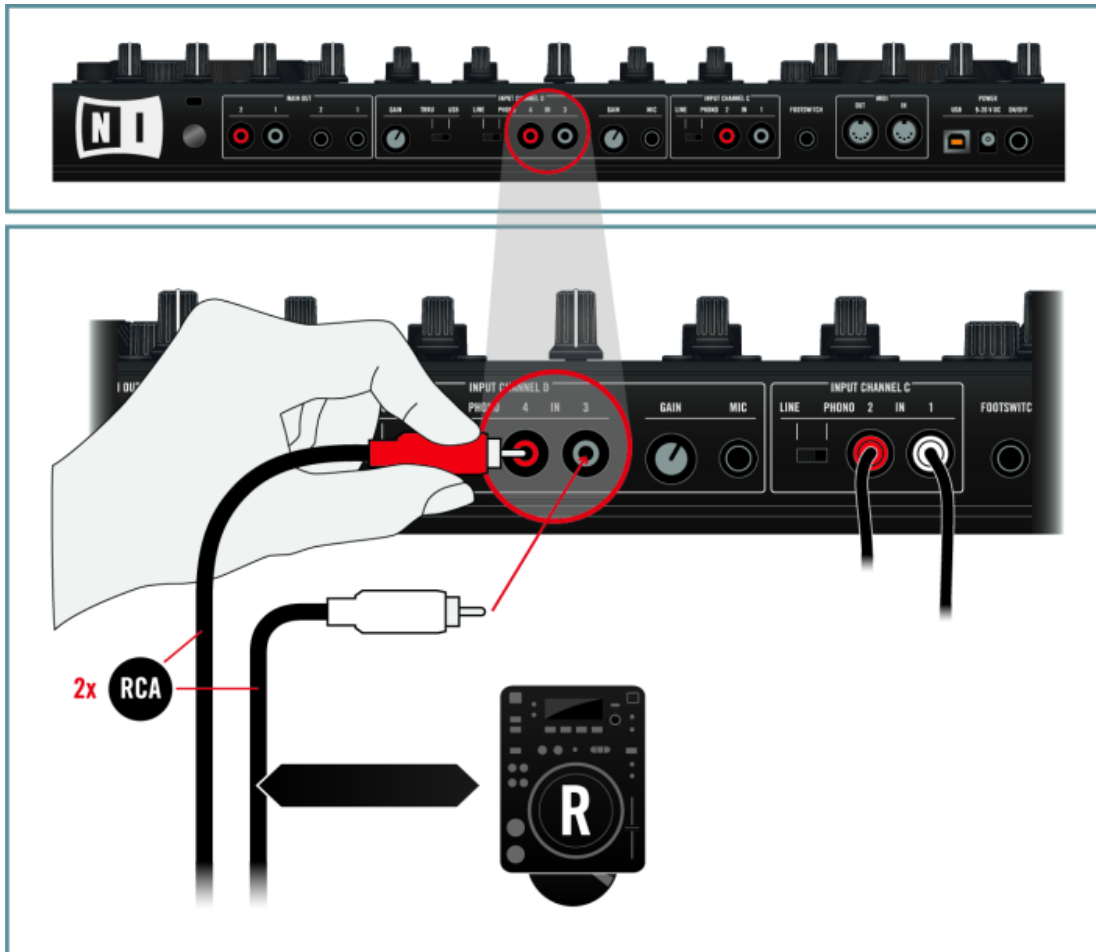


2. Set the LINE/PHONO switch to Line.

4.4.2 Connect the Right CD Player (R)

To connect the right CD player:

1. Connect the left and right audio output cables of the right CD player (R) to **input Channel D** on the back panel of the TRAKTOR KONTROL S4.



2. Set the LINE/PHONO switch to Line.
 → Your TRAKTOR SCRATCH PRO 2 hardware setup is complete.
 ► Proceed with the TRAKTOR software installation in chapter [↑5, Software Installation](#).

5 Software Installation

- Please carefully review the installer screens and the suggested installation paths in order to avoid that any unwanted folders are created on your hard disk.
- **Moving** installation **folders** related to Native Instruments software **after installation is not recommended**. Future software updates rely on the directory locations set during initial installation.

5.1 Installation on Mac OS X



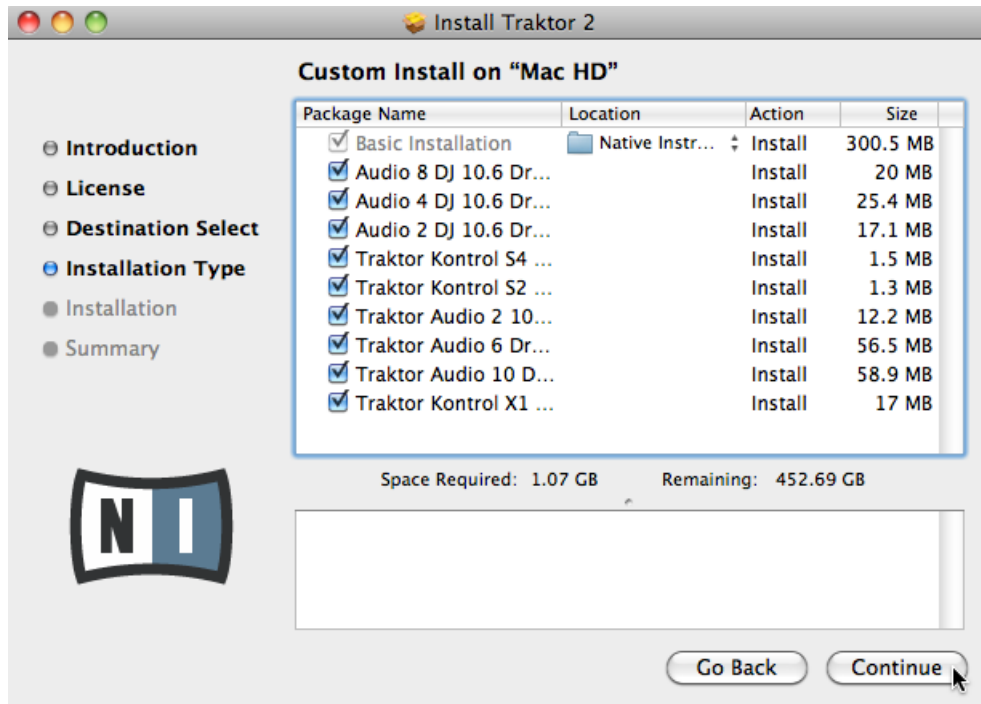
At the end of the installation process you will need to restart your computer. Please save your work and close all applications before proceeding.

5.1.1 Locate and Start the Installation Program

1. Insert the TRAKTOR Software DVD into the CD/DVD-ROM drive of your computer.
2. Locate the **Traktor 2.5.0 Installer Mac.mpkg** file on the DVD.
3. Double-click the **Traktor 2.5.0 Installer Mac.mpkg** file to start the installation procedure.
4. Follow the on-screen instructions.

5.1.2 Select the Components to Install

After you have accepted the software license agreement, the installer window displays the components available for installation. This installer screen also contains information about how much disk space the individual components will use.



The components selection screen of the installation program.



It is recommended to keep all features selected unless you have a specific reason to deselect a feature (such as if this feature is already installed on your computer, or you know for sure you will not use the device).

Basic Installation: This installs the TRAKTOR software along with its documentation. This component cannot be deselected. It also installs the Service Center application (required for activation of your product) and the Controller Editor application, which allows you to configure the controller's MIDI assignments for using the controller with other applications than the included software.

Audio 8/4/2 DJ Drivers: This installs drivers for the AUDIO 8 DJ, AUDIO 4 DJ and AUDIO 2 DJ audio interfaces by Native Instruments. If you do not intend to use any of these audio interfaces, you can deactivate the checkboxes.

Traktor Kontrol S4: This installs the driver for the TRAKTOR KONTROL S4 controller. If you do not intend to use a TRAKTOR KONTROL S4 controller on your computer, you can deactivate the checkbox.

Traktor Kontrol S2: This installs the driver for your TRAKTOR KONTROL S2 controller. If you do not intend to use a TRAKTOR KONTROL S2 controller on your computer, you can deactivate the checkbox.

Traktor Audio 2/6/10 Drivers: This installs drivers for the TRAKTOR AUDIO 2, TRAKTOR AUDIO 6 and TRAKTOR AUDIO 10 audio interfaces by Native Instruments. If you do not intend to use any of these audio interfaces, you can deactivate the checkboxes.

Traktor Kontrol X1: This installs the driver for the TRAKTOR KONTROL X1 DJ controller. If you do not intend to use a TRAKTOR KONTROL X1 controller on your computer, you can deactivate the checkbox.

Background Components

These components are not displayed in the installer window, but are installed depending on your system configuration:

Controller Editor: The Controller Editor application allows you to configure your Native Instruments hardware controller (e.g., TRAKTOR KONTROL S4 or X1) for use as a MIDI controller with applications other than the TRAKTOR software. This component will automatically be installed if you install one of the controller drivers (unless a newer version of Controller Editor already exists on your computer).

Service Center: The Service Center application is required for activation of the TRAKTOR software. It will be installed independent of the selected drivers (unless a newer version of Service Center already exists on your computer).

Control Panel: The Control Panel is an audio settings configuration tool, installed with the driver of your NI audio interface. Most of its settings can too be controlled from the TRAKTOR software user interface, so you probably won't need the Control Panel when using TRAKTOR. For more information on the Control Panel, please refer to the manual of your NI audio interface.



It is strongly recommended to install the TRAKTOR software to the default location. If you still need to change the install location, click on the folder icon in the [Location](#) column and select the desired folder.

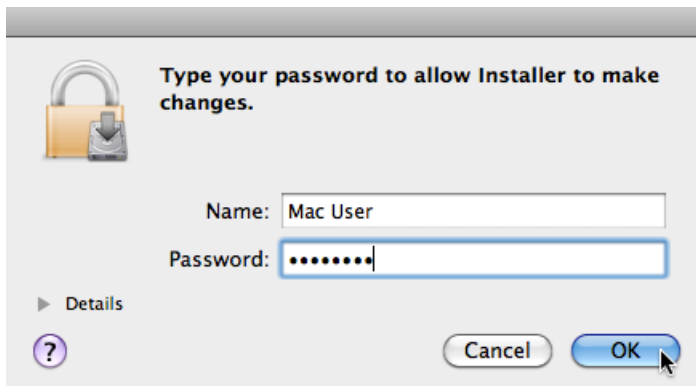
- After you have customized the installation as required, click [Continue](#) and then follow the on-screen instructions.

5.1.3 Enter Your Password

Before installing the selected components, the installer will prompt you to enter your Mac OS X password. This is a standard behavior on Mac OS X that makes sure you are aware of the changes the installer is about to make.



The Mac OS X user account you are using needs to have Administrator privileges.

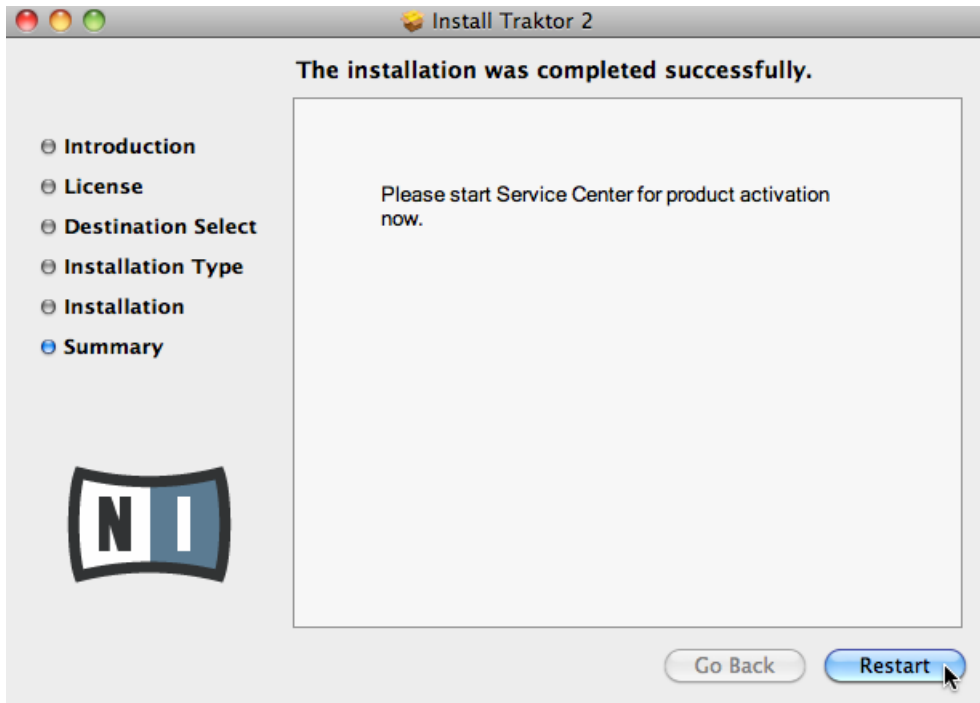


The Mac OS X password prompt.

- To proceed, enter your password and click [OK](#).
- The selected components will be installed.

5.1.4 Complete the Installation

After the components have been installed, you need to restart your computer.



The final screen of the installation program.

- ▶ On the last screen of the installation program, click [Restart](#) to restart your computer and complete the software installation.
- Your computer will immediately restart.
- ▶ After your computer has restarted, continue reading in chapter [↑6, Product Activation](#) of this Setup Guide for information about product activation.

5.2 Installation on Windows



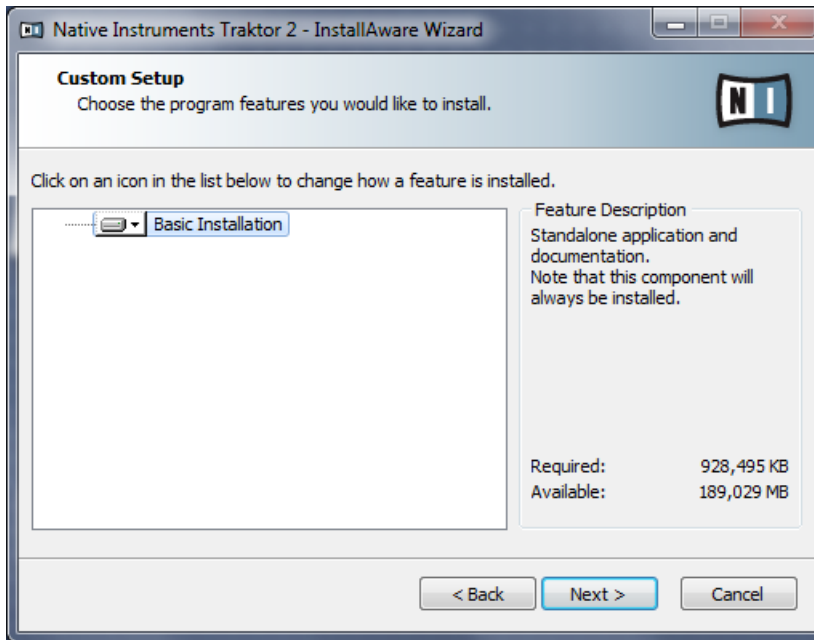
If you are installing the TRAKTOR software on Windows Vista or Windows 7, you may need to turn off Windows User Account Control (UAC) before you can proceed. See chapter [↑11.2, User Account Control and Internet Security](#) in this Setup Guide for detailed information on how to turn off UAC. In addition to this, it may be necessary to disable your anti-virus software during installation.

5.2.1 Locate and Start the Installation Program

1. Insert the TRAKTOR Software DVD into the CD/DVD-ROM drive of your computer.
2. Locate the **Traktor 2.5.0 Setup PC.exe** file on the DVD.
3. Double-click the **Traktor 2.5.0 Setup PC.exe** file to start the installation procedure.
4. Follow the on-screen instructions.

5.2.2 Confirm the Features to Install

After you have accepted the software license agreement, the installer window displays the features available for installation.



The components selection screen of the installation program.

Basic Installation: This is the dedicated TRAKTOR software for your TRAKTOR SCRATCH PRO 2 system, along with its documentation. This component cannot be deselected.

Background Components

These features are not displayed in the installer window, but are installed depending on your system configuration:

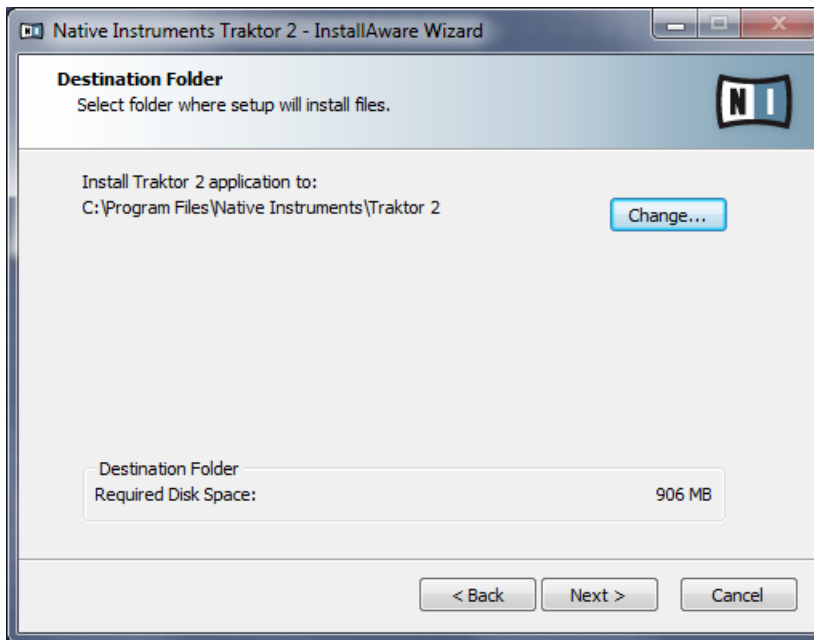
Controller Editor: The Controller Editor application allows you to configure your Native Instruments hardware controller (e.g., TRAKTOR KONTROL S4 or X1) for use as a MIDI controller with applications other than the TRAKTOR software. This component will automatically be installed if you install one of the controller drivers (unless a newer version of Controller Editor already exists on your computer).

Service Center: The Service Center application is required for activation of the TRAKTOR software. It will be installed independent of the selected drivers (unless a newer version already exists on your computer).

Control Panel: The Control Panel is an audio settings configuration tool, installed with the driver of the audio interfaces. Most of its settings can too be controlled from the TRAKTOR user interface so you probably won't need the Control Panel when using TRAKTOR. For more information on the Control Panel, please see the manual of your audio interface.

- Click [Continue](#) and then follow the on-screen instructions.

5.2.3 Confirm the Application Installation Path



The software installation path screen of the installation program.



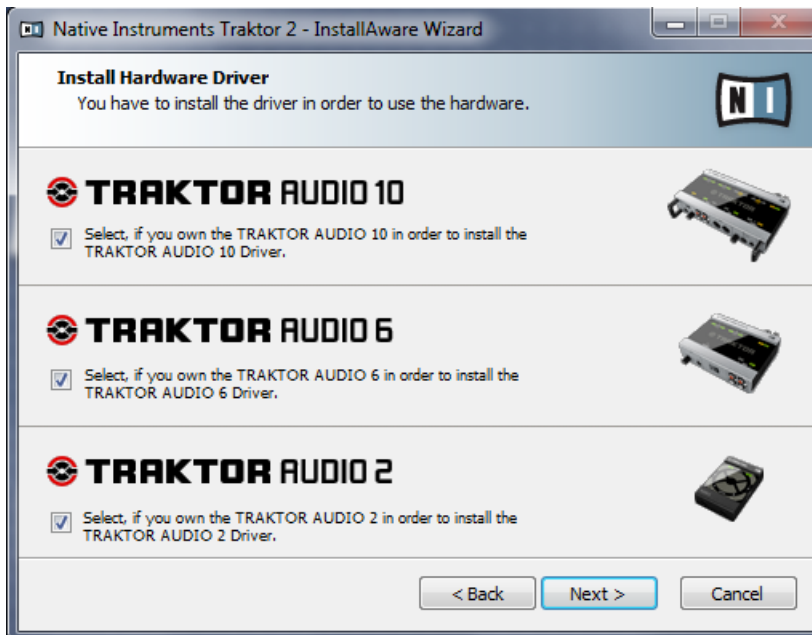
It is strongly recommended to install the TRAKTOR software to the default location. If you still need to change the install location, click [Change](#) to open a Folder Selection dialog and select the desired destination folder.

You will be asked to select and confirm an installation path for the TRAKTOR software.

- Click [Next](#) to proceed.

5.2.4 Select Your Hardware Drivers

The following screens of the installation program let you select hardware drivers for audio interfaces and controllers.

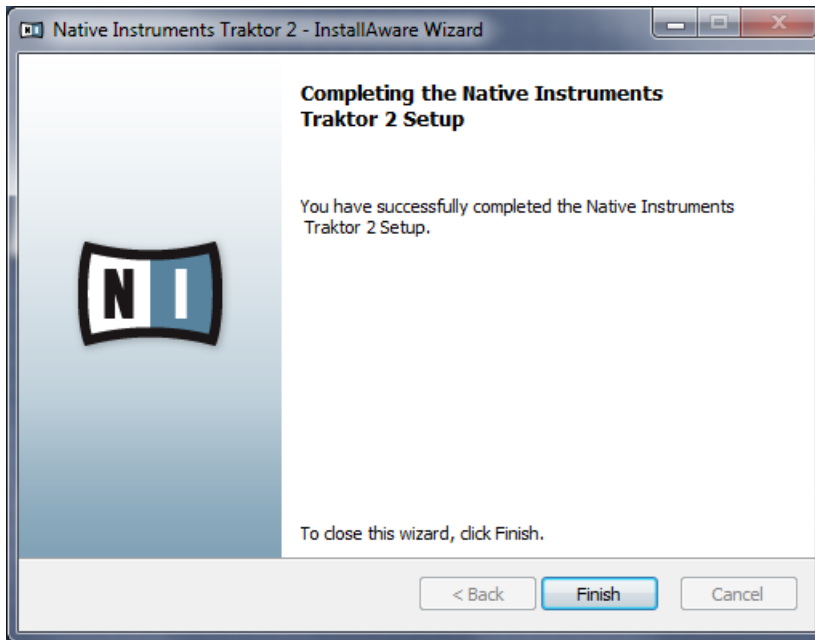


The hardware driver selection screen of the installation program.

1. On the following screens, activate the checkboxes of hardware devices you want to use on your computer. If you do not want to use any of the hardware devices, leave the checkboxes unchecked.
2. Click [Next](#) to proceed.

5.2.5 Complete the Software Installation

Once you have selected the required driver(s) and confirmed your selection, you will be forwarded to the last screen of the installation program.



The final screen of the installation program.

- ▶ On the last screen of the installation program, click [Finish](#) to complete the installation and exit the installation program.
- ▶ Continue reading in chapter [↑6, Product Activation](#) of this Setup Guide for information about product activation.

6 Product Activation



This section uses a placeholder name ("NI Product") on all screenshots. The relevant section on your screen will display the name of the Native Instruments product you are activating.

6.1 Activating Your Product Online



Skip to chapter [↑6.3, Activating Your Product Offline](#) if your computer is not connected to the Internet.

6.1.1 Start Service Center

1. Locate the Service Center application on your hard disk. During installation, a folder labeled **Native Instruments** was created in the Applications (Mac OS X) / Program Files (Windows) folder. Within this folder, a subfolder labeled **Service Center** holds the corresponding application.
2. Double-click the Service Center application to start the activation procedure.



It is necessary to activate your Native Instruments product in order to use its full functionality.

6.1.2 Log In Into Your User Account

SERVICE CENTER

Log in

Please log in using your e-mail address and password.

E-mail address

Password

☐ Log me in automatically on next startup

› Forgot your password?

› Create new User Account

▶ Log in

Status:
Online

The log-in screen of Service Center.

- ▶ Log in with your e-mail address and Native Instruments password.
- ▶ If you do not have a Native Instruments account yet, click on [Create new User Account](#). Fill in the address form. The password will be sent to you via e-mail.

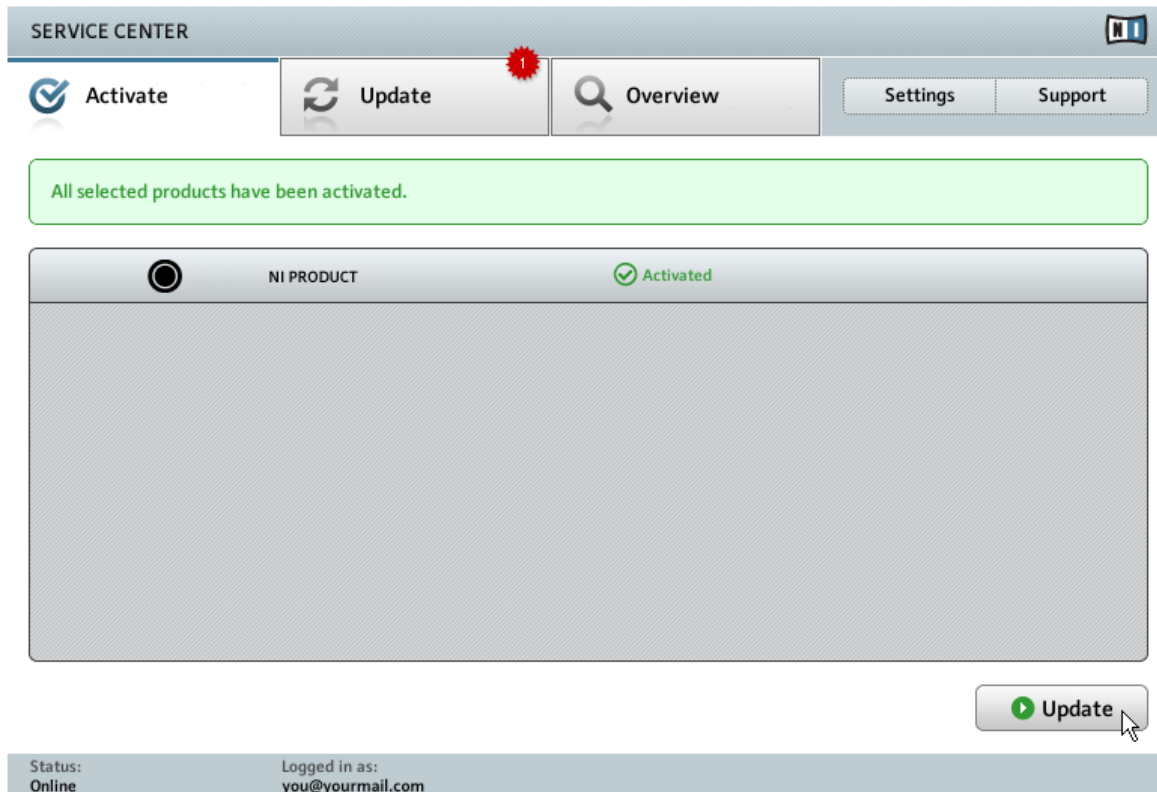
6.1.3 Activate the Product

The screenshot shows the 'SERVICE CENTER' interface. At the top, there's a navigation bar with 'Activate' (highlighted with a checkmark icon), 'Update' (refresh icon), 'Overview' (magnifying glass icon), 'Settings', and 'Support'. Below this is a yellow instruction box: 'Enter the serial numbers for the products you want to activate.' The main area contains a window titled 'NI PRODUCT' with a header bar showing a power button, the title, and three input fields (the first contains '12345', the second '67890', and the third is empty). To the right of the input fields are two empty boxes and a shopping cart icon. The main body of the window is a large grey rectangle. At the bottom right of the window is an 'Activate' button with a green checkmark icon. A mouse cursor is pointing at this button. The footer bar shows 'Status: Online' and 'Logged in as: you@yourmail.com'.

The product activation screen of Service Center.

1. Enter the software serial number in the number field. The software serial number is located on the registration flyer supplied with your product box.
2. Click [Activate](#) to proceed.

6.1.4 Finish the Online Activation



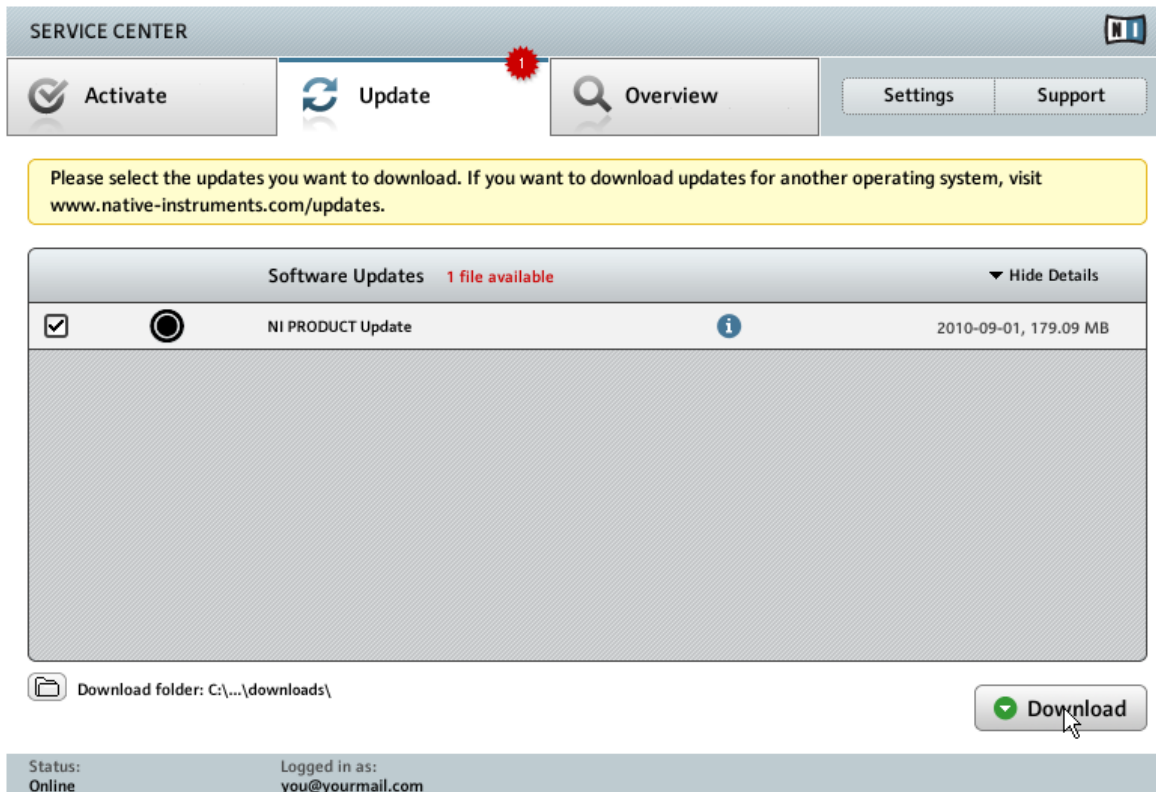
Service Center confirming the product activation.

Service Center confirms that the product has been activated successfully. A search for updates will start automatically.

- If updates for any of the activated products are available, the button in the bottom right corner of the screen reads [Update](#). To download the updates, click the [Update](#) button and proceed with chapter [↑6.2, Updating Your Product](#).
- If no updates are available, the button in the bottom right corner of the screen reads [Exit](#). You can click it to close Service Center.

6.2 Updating Your Product

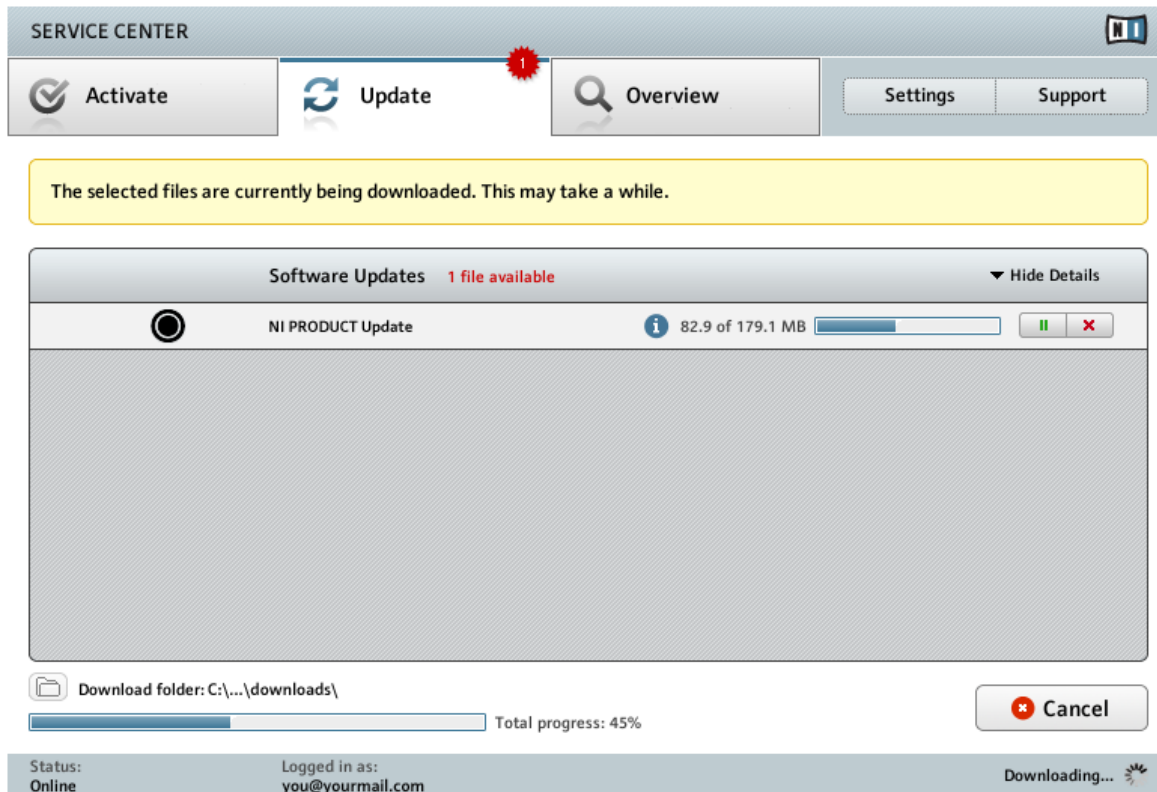
6.2.1 Select Updates



The product update screen of Service Center.

1. In Service Center, click the [Update](#) tab to view a list of available updates.
2. Select the updates you want to download by checking the checkboxes on the left. We recommend downloading all preselected updates.
3. Click [Download](#). The download will start.

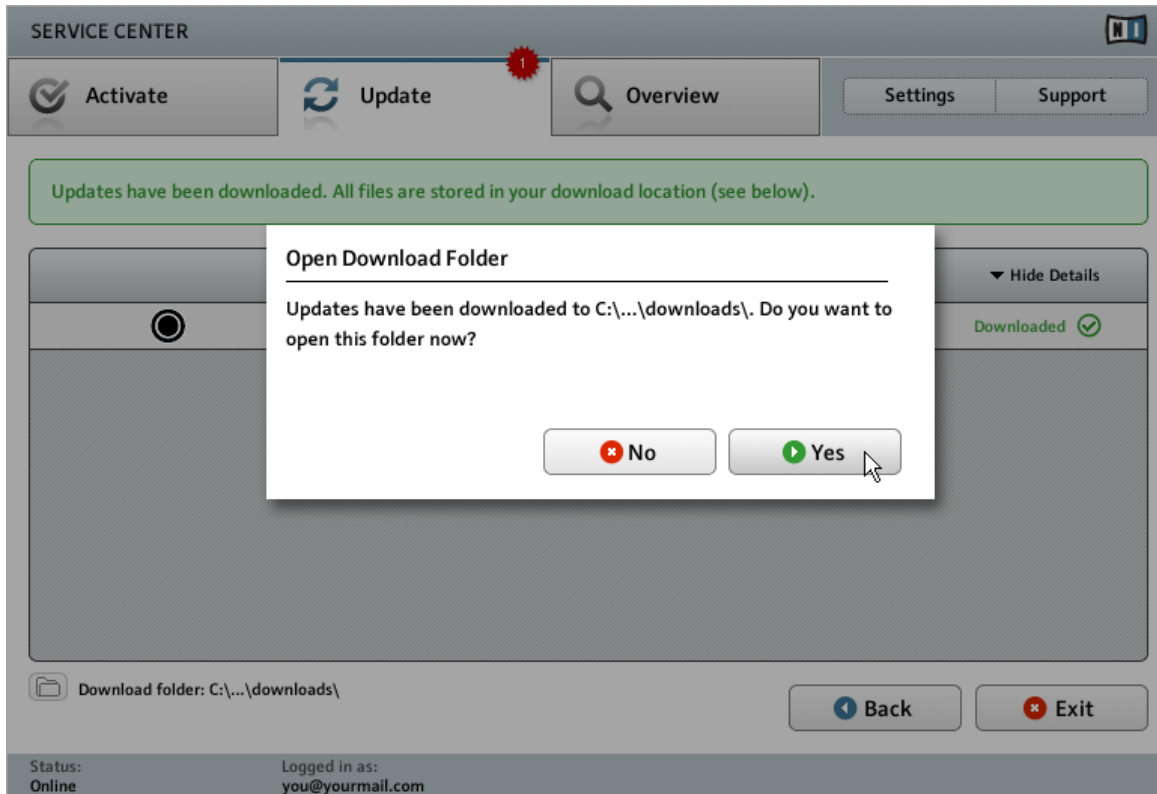
6.2.2 Download the Updates



The product update is in progress.

Depending on the file size and the speed of your internet connection, downloading the files may take a while. We strongly recommend that you always install the latest updates.

6.2.3 Open Your Download Folder



Service Center confirming all updates were downloaded, and offering to open the download folder.

After all files have been downloaded successfully, you will be asked to open the download folder.

- ▶ Click [Yes](#) to open the download folder.
- ▶ After the download folder has opened, you can quit Service Center by clicking [Exit](#).

6.2.4 Install Updates

1. Launch the first installer file from the download folder.
 2. Follow the instructions of the Installation Wizard.
 3. Proceed until you have installed all updates.
- Continue reading in chapter [↑7, Final Preparations](#) of this Setup Guide for instructions on the final preparations before you can start using your TRAKTOR SCRATCH PRO system.

6.3 Activating Your Product Offline

If the computer you want to use Native Instruments products on is permanently not connected to the internet, you can activate the products utilizing the Offline activation procedure. Note that you will need a second computer that is connected to the internet.

6.3.1 Start the Offline Activation

SERVICE CENTER

Internet connection

Service Center was unable to establish an internet connection. How do you wish to proceed?

Try connecting to the internet again

Make sure that your computer is connected to the internet.

Retry

Use a proxy server to connect to the internet

Host

Port

Proxy

Continue without connecting to the internet

Please note: You will have to transfer an Activation Request File to a computer with internet access.

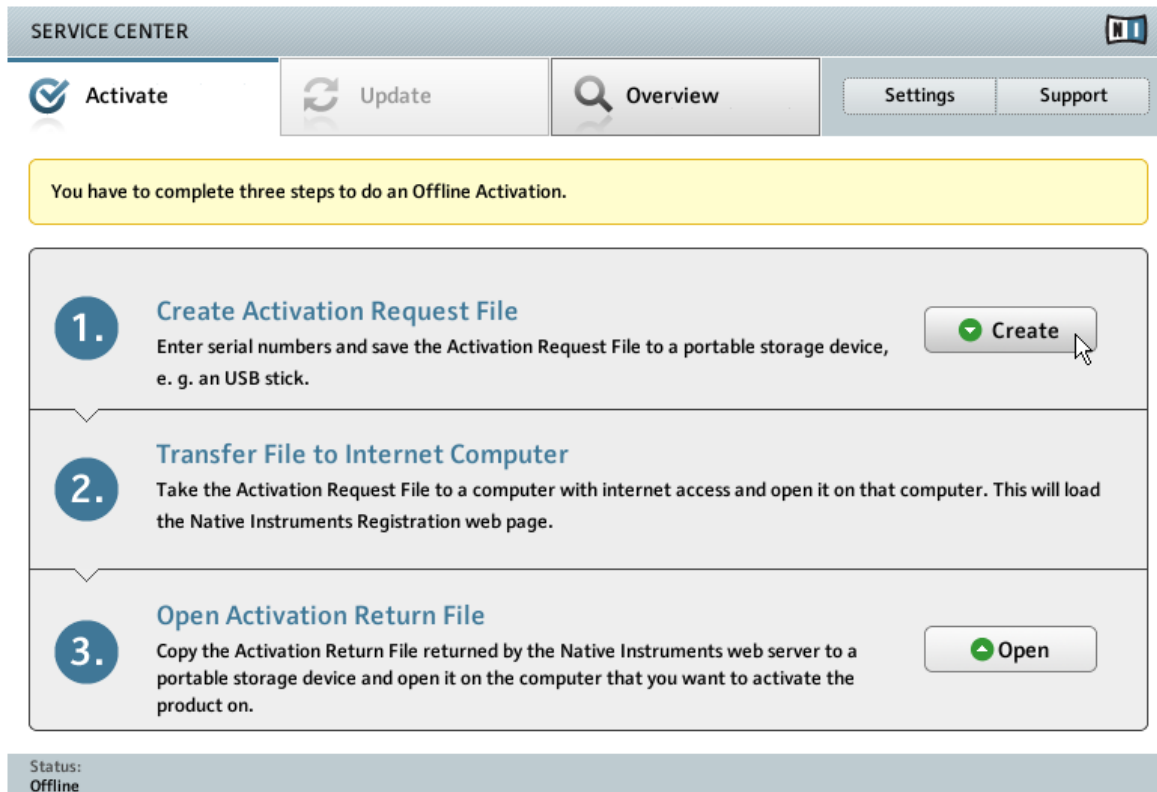
Offline

Status:
Pending...

The internet connection screen of Service Center.

1. Start Service Center. If no internet connection is detected, you will be redirected to the [Internet connection](#) screen pictured above.
2. In the [Continue without connection to the internet](#) area at the bottom of the screen, click [Offline](#). You will be forwarded to the [Activate](#) screen.

6.3.2 Create the Activation Request File



The offline activation screen of Service Center.

- On the [Activate](#) screen, click [Create](#). The [Activate](#) screen will display fields in which to enter the serial number (see next step).

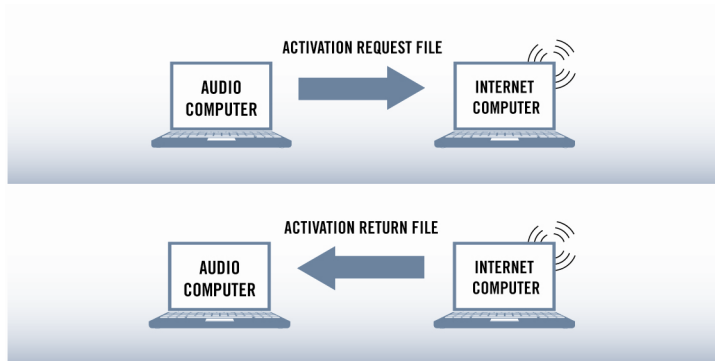
6.3.3 Enter the Serial Number

The screenshot shows the 'SERVICE CENTER' interface. At the top, there's a navigation bar with 'Activate' (checked), 'Update', 'Overview', 'Settings', and 'Support'. Below this is a yellow instruction box: 'Enter the serial numbers for the products you want to activate.' The main area is a window titled 'NI PRODUCT' with a large empty text field for entering serial numbers. At the bottom right of this field are 'Back' and 'Create' buttons. A status bar at the very bottom indicates 'Status: Offline'.

The product activation screen of Service Center.

1. Enter the software serial number in the number field. The software serial number is located on the registration flyer supplied with your product box.
2. Click [Create](#) to save the Activation Request File (ActivationRequestFile.html). A Save File dialog will open and let you select a target folder.
3. Save the Activation Request File to the desired target folder.

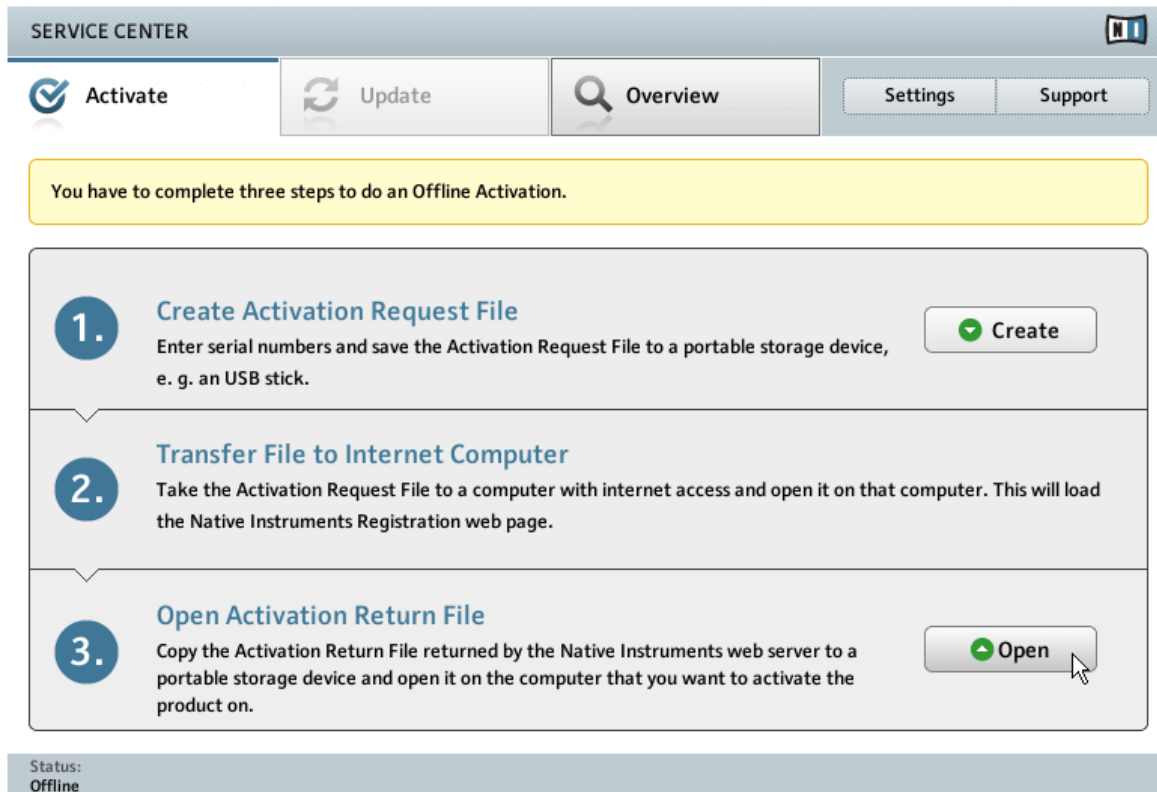
6.3.4 Transfer the Activation Request File



The offline activation procedure.

1. Copy the Activation Request file to a portable storage device and transfer it to a computer with internet connection.
2. Open the Activation Request file by double-clicking it.
3. Follow the instructions on the Service Center product activation web page. As a new Native Instruments user you will need to create a new account before you can log in.
4. Transfer the Activation Return file back to your audio computer.

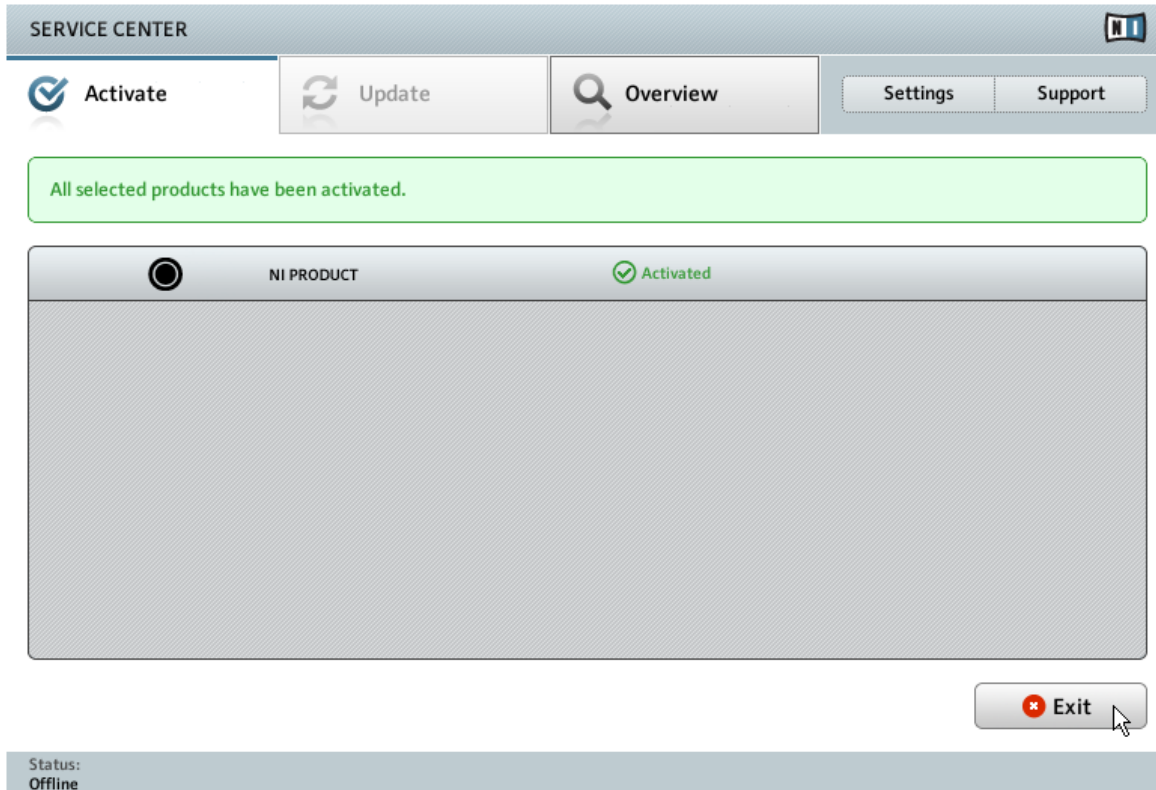
6.3.5 Open the Activation Return File



The offline activation screen of Service Center.

1. On your audio computer, start Service Center again. In the [Continue without connection to the internet](#) area at the bottom of the screen, click [Offline](#).
2. Select the [Activate](#) tab and click [Open](#) to load the Activation Return file.

6.3.6 Finish the Offline Activation



Service Center confirming the product activation.

After you have opened the Activation Return file, Service Center confirms that the product has been activated successfully. You can quit Service Center by clicking [Exit](#).

- To obtain updates for your products, log in under <http://www.native-instruments.com/updates>, using your Native Instruments user account information. Download all relevant updates from the Personal Update Manager to your internet computer, transfer them to your music computer utilizing portable storage media, and install them.

- ▶ Continue reading in chapter [↑7, Final Preparations](#) of this Setup Guide for instructions on the final preparations before you can start using your TRAKTOR SCRATCH PRO system.

7 Final Preparations

Before you can start using your TRAKTOR SCRATCH PRO system, a few more preparations are required.

7.1 Connect Your Hardware to Your Computer

- ▶ Connect all your devices and USB controllers to your computer.

7.2 Put On a Control Vinyl or Insert a Control CD

- ▶ If you are using **turntables** to control TRAKTOR, put a Control Vinyl on each of your turntables.
- ▶ If you are using **CD players** to control TRAKTOR, insert a Control CD into each of your CD players.



You can control up to four of TRAKTOR Decks simultaneously. The TRAKTOR SCRATCH PRO 2 SOFTWARE & Timecode Kit package contains two Control Vinyls and two Control CDs. If you want to use four turntables or four CD players, you can purchase additional Control Vinyls or Control CDs in the Native Instruments online shop under <http://www.native-instruments.com/en/shop/>.

7.3 Switch On Your Devices

To avoid speaker noises, fully turn down the volume controls on all devices before you switch them on. It is recommended to switch on the devices in this order:

1. Computer/interface
2. Turntables / CD players, L and R
3. DJ mixer / Certified mixer

4. TRAKTOR KONTROL S4
5. Amplification system (active speakers or power amplifier and passive speakers)

Later on, when the software is running and you have loaded tracks to TRAKTOR's Decks, gradually raise the volume controls while music is playing to set the desired listening level.



Before putting on headphones, always make sure the headphone volume control is set to minimum! Then, while playing music, slowly increase the headphone volume until it reaches the desired listening level.

7.4 Start the TRAKTOR Software

After successful installation, you will find the TRAKTOR software installation folder on your hard drive, containing the application and the documentation resources. If you installed using the default settings, these folders can be found here:

Mac OS X

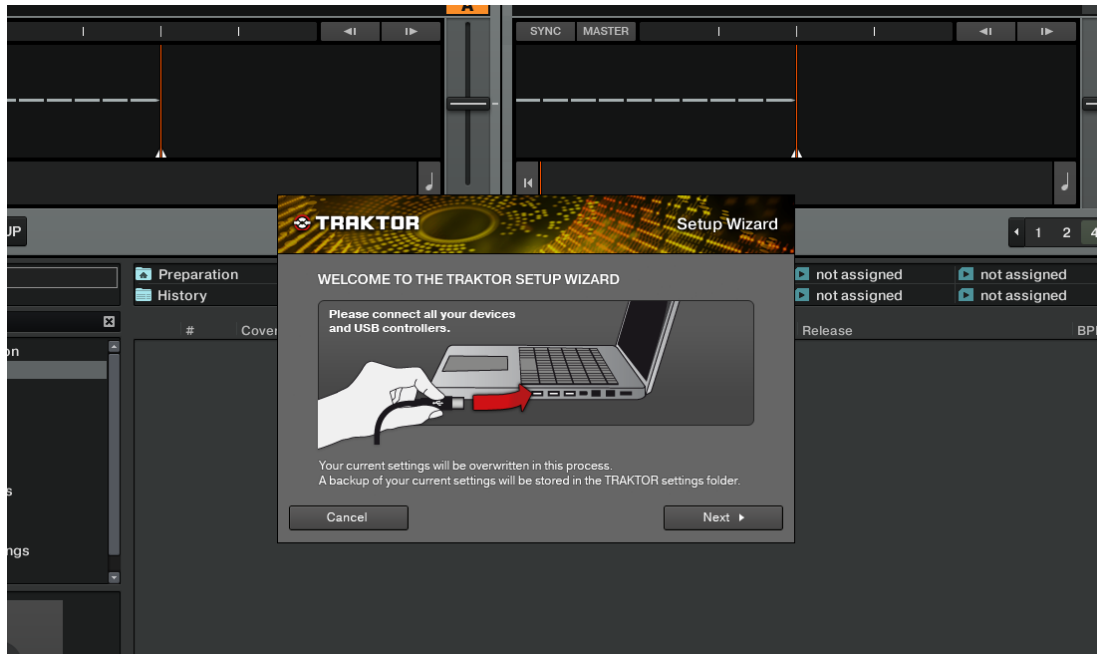
Macintosh HD/Applications/Native Instruments/Traktor 2/

Windows

C:\Program Files\Native Instruments\Traktor 2

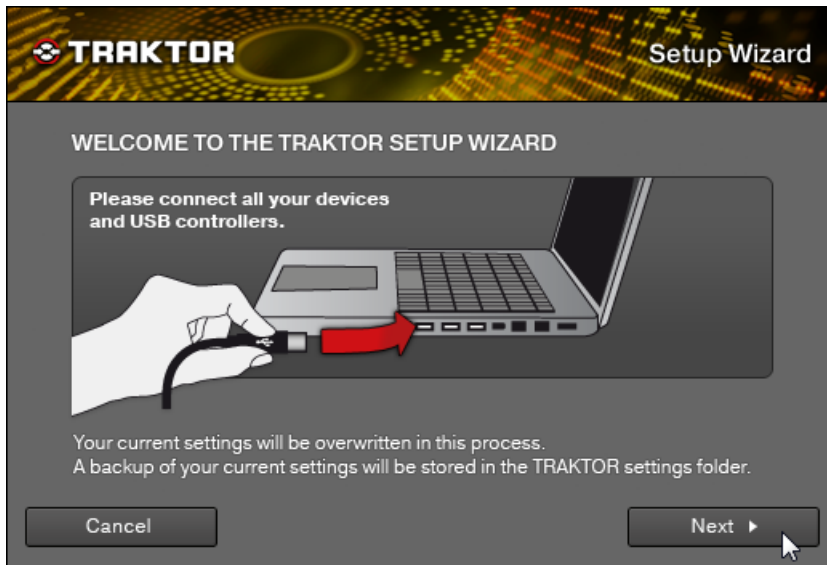
- To start the TRAKTOR software, double-click the **Traktor 2** application icon in the installation folder, or, on Windows, one of its aliases/shortcuts created during the installation procedure (for example on your desktop).

→ The TRAKTOR window with the Setup Wizard's start screen in front of it will open.



7.5 Using the Setup Wizard to Configure Your TRAKTOR SCRATCH PRO System

The Setup Wizard will help you to configure your TRAKTOR SCRATCH PRO system.



Welcome screen of TRAKTOR's Setup Wizard.

- ▶ On the Welcome screen, click [Next](#) to proceed.

7.5.1 Select your Hardware



If you are using a TRAKTOR KONTROL S4, this screen will not occur. Continue reading with point [↑7.5.2, Select a Deck Setup](#).

On the Hardware Controller Setup screen, you can select a hardware you want to use with TRAKTOR. If you are going to control your tracks using turntables or CD players using an audio interface, leave the menu set to its default (*No*).

If you are going to use a hardware controller or a Certified mixer with TRAKTOR, set the menu on (*Yes*). On the following screen, you can choose the manufacturer and name of your specific hardware.

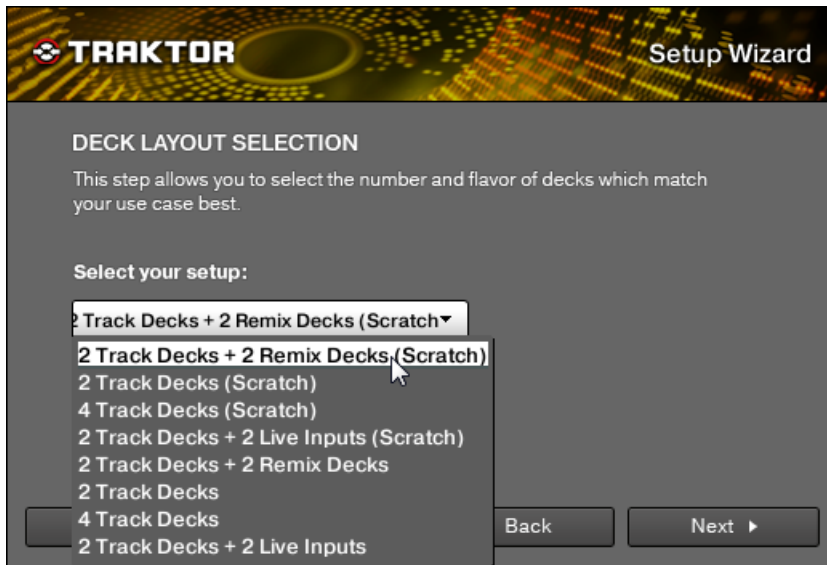


The Hardware Controller Setup screen.

- ▶ Click [Next](#) to proceed.

7.5.2 Select a Deck Setup

On the Deck Setup Selection screen you can select the types of Decks you want to use in TRAKTOR.



The Deck Setup Selection screen.

1. From the drop-down menu, select the *2 Track Decks + 2 Remix Decks (Scratch)* entry or if using a TRAKTOR KONTROL S4 select the *4 Track Decks (Scratch)* entry.
2. Click [Next](#) to proceed.

7.5.3 Check the Setup

The Setup Wizard's last screen displays a summary of the TRAKTOR setup you are about to save.

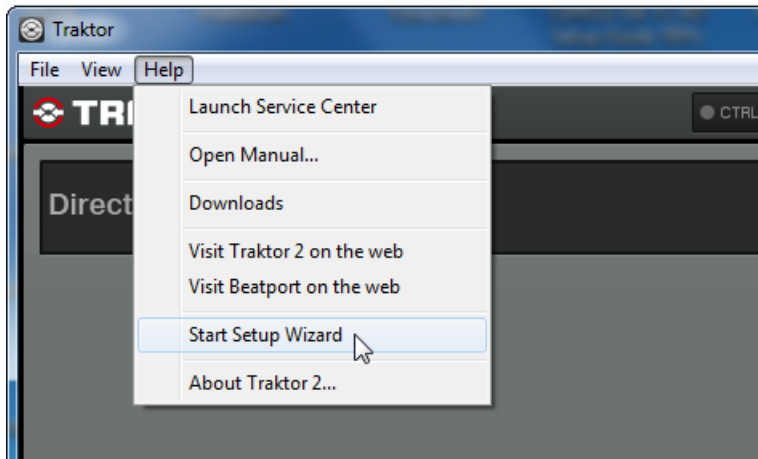


The last screen of the Setup Wizard.

- Click [Finish](#) to confirm your selection and to close the Setup Wizard.



You can open the Setup Wizard again at any time by selecting the *Start Setup Wizard* entry from TRAKTOR's [Help](#) menu.



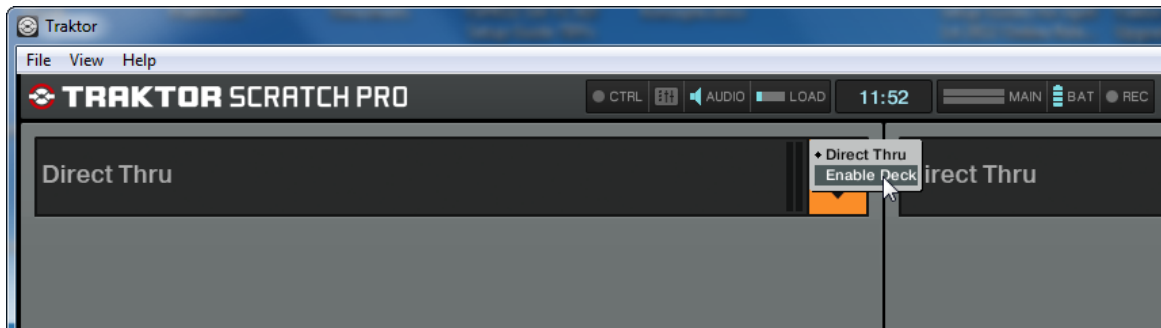
Launching the Setup Wizard from TRAKTOR's Help menu.

7.6 Enabling TRAKTOR's Decks



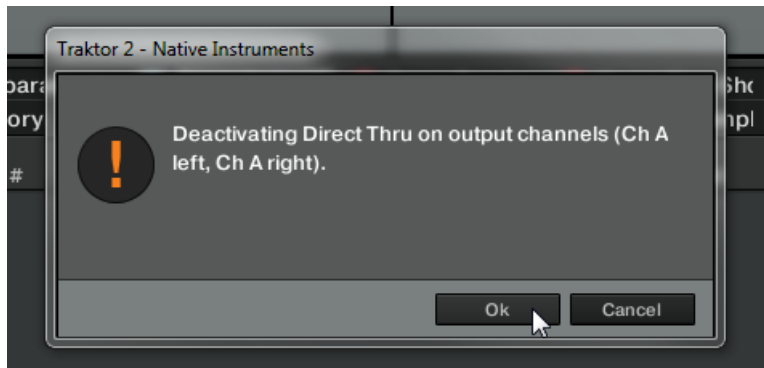
The following instructions apply to the TRAKTOR AUDIO 6, TRAKTOR AUDIO 10 and TRAKTOR KONTROL S4. If you are using the AUDIO 4 DJ or the AUDIO 8 DJ, you can skip to section [↑7.7, Calibrating TRAKTOR for Timecode Control](#) as the *Direct Thru* mode is not supported with these audio interfaces. In case you are using a Certified Mixer, the steps necessary to enable TRAKTOR's Decks might differ; consult your mixer's documentation for further information.

In its initial state, the Track Decks are set to *Direct Thru* mode: audio arriving at the TRAKTOR AUDIO 6's audio input will be sent to the corresponding audio outputs, completely bypassing the TRAKTOR software. Before you can play tracks in TRAKTOR, you need to enable TRAKTOR's Decks, which deactivates the *Direct Thru* mode.



Enabling a Track Deck from the user interface.

1. In the top-left Deck, click on the orange-colored status indicator (currently labeled **THRU**).
2. From the drop-down menu, select the *Enable Deck* entry.
3. TRAKTOR will notify you that you are about to deactivate Direct Thru on audio channels A. Click **Ok** to proceed.



- The Deck will be switched to Track Deck mode, with Scratch Control enabled. The Deck's orange-colored status indicator is now labeled **A**.



- Repeat the steps above in the top-right Deck, which will become Deck B once you have enabled it.

→ Both Deck A and B now display their Scratch Control-specific Track Deck view.



You can also change the Deck Flavor via *File > Preferences > Decks Layout > Deck Flavor*.



If you have a TRAKTOR KONTROL S4, Deck A and Deck B are initially designated for Scratch Control although your turntables are connected to Deck C and Deck D. In order to designate Deck C and Deck D as your Scratch Decks, click on the status indicators labeled **C** and **D** and select *Scratch Control* in the drop-down menu. Afterwards, deactivate the Scratch Control for Deck A and Deck B selecting *Internal Playback* in the drop-down menu of their status indicators.

- Now, the PHONO LEDs on the TRAKTOR AUDIO 6's top panel should be lit, and THRU should be deactivated. TRAKTOR is now ready to be used with Control Vinyls.



7.7 Calibrating TRAKTOR for Timecode Control

TRAKTOR will automatically calibrate your system for timecode control as soon as you put the needle on the Control Vinyl or play the Control CD for the first time. TRAKTOR will analyze position and tempo of the timecode source, along with the signal quality.



You can also activate / deactivate the Platter or Scope of a Scratch Deck via *File > Preferences > Decks Layout > Platter / Scope*.

- Click on the Deck platter of a Track Deck to display the Scope panel.

If the signal quality is sufficient, your timecode medium will be detected. Subsequently the signal meter to the right of the scope will fill up completely, and the scope will show two nice circles. If you have a track loaded on the associated Deck, it will start playing. A Deck that has been calibrated successfully should look like the one depicted below.



Successful calibration of Deck A in TRAKTOR.

Now that your TRAKTOR SCRATCH PRO system is set up and calibrated, it is recommended you read the **TRAKTOR 2 Getting Started** PDF, which provides further information on how to use your new DJ system. This document also explains how to solve the most common issues that may occur.

8 Upgrade from Earlier TRAKTOR SCRATCH PRO / DUO Systems

This Chapter explains the upgrade process of previous TRAKTOR SCRATCH PRO / DUO systems to TRAKTOR SCRATCH PRO 2. If you are running a previous TRAKTOR SCRATCH PRO / DUO system (including Multicore Cables) you still can use it and upgrade with the TRAKTOR SCRATCH PRO 2 SOFTWARE & TIMECODE KIT.

When upgrading from one of the aforementioned versions, you will need to import your user data and mappings. This is a straightforward process assisted by the TRAKTOR software; however, there are a few things to be observed when upgrading. See the following sections for further information.

8.1 Backup

Before installing TRAKTOR SCRATCH PRO 2 over your previous version, backup the following folders and files:

- your TRAKTOR folder, per default found in *[User]\My Documents\Native Instruments\Traktor* (Windows) and *User:Documents:Native Instruments:Traktor* (Mac OS X)
- your Music folders as defined in *Preferences > Data Location > Music Folders*
- any other data that is not stored in the aforementioned places because you have chosen another location for them.



At this point, it is a good idea to remove all unnecessary files from your TRAKTOR folder, e.g., mappings for controllers you do not use anymore, etc.

8.2 Software Installation

The software installation process is the very same as described earlier in this Setup Guide. Skip back to chapter [↑5, Software Installation](#) and follow the instructions. Afterwards activate TRAKTOR and make the final preparations before first use. For completing the upgrade process, import your data as described in the next point.

8.3 Importing Your Data

- When you start TRAKTOR 2 for the first time, the Setup Wizard greets you with some simple questions regarding your setup. This will adjust TRAKTOR's look and Preferences accordingly. Read more about the Setup Wizard in the TRAKTOR 2 manual.
- Next, TRAKTOR will ask if you want to import your previous data by copying the existing user content to a new folder in your user folder. Your previous data will not be altered if you copy it to the new default folder.

Importing Your MIDI and Hotkey Mappings

For TRAKTOR 2, the mapping system has been changed. While some mappings created with previous versions of TRAKTOR may still work, others will not be imported correctly.



We recommend double-checking your imported mappings before you use them in a live situation.

9 Documentation Resources

9.1 PDF Manuals

The **documentation** is available in PDF format and located within the TRAKTOR 2 installation directory on your hard drive. You can also access these documents from the application's [Help](#) menu.

In addition to this guide, your TRAKTOR product provides the following documents:

- The **TRAKTOR 2 Getting Started** explains basic workflows like how to import your music collection, how to mix tracks, how to use Remix Decks and other features of TRAKTOR 2. There is also a dedicated section explaining the vinyl and CD control capabilities available in TRAKTOR SCRATCH PRO 2. The TRAKTOR 2 Getting Started is your next step in learning to use your TRAKTOR SCRATCH A10 system!
- The **TRAKTOR 2 Manual** is the primary information resource concerning the more advanced features of the TRAKTOR software. It provides thorough descriptions of all user interface elements, options, tools, and sound processing modules built into the application. You can use it, both as a reference manual and a thorough guide for working with the application.

9.2 Video Tutorials

You can find a number of video tutorials on our website under the following URL:

<http://www.native-instruments.com/traktorvideos>

You'll learn how to achieve common tasks in your TRAKTOR SCRATCH PRO system. We recommend that you follow along with these instructions with TRAKTOR simultaneously running on your computer.

10 Support

10.1 Knowledge Base / Readme / Online Support

- Open the Service Center application and click on the [Support](#) button in the upper right corner. Here you will find direct links to the Native Instruments **Online Knowledge Base** and the **Online Support Form**.

The Online Knowledge Base gathers useful information about your Native Instruments product and can be of great help to solve possible issues you may encounter when working with Native Instruments products.

If no Knowledge Base entry matches your problem, or if the matching entry does not solve the problem, you can use the Online Support Form to contact the Technical Support team at Native Instruments. The Online Support Form will ask you to enter information about your hardware and software setup. This information is essential for our support team to be able to provide you with quality assistance.

When communicating with the Native Instruments support team, keep in mind that the more details you can provide about your hardware, your operating system, the version of the software you are running, and the problem you are experiencing, the better they will be able to help you. In your description, you should mention:

- How to reproduce the problem
- What you have already tried to fix the problem
- A description of your setup, including all hardware
- The brand and specifications of your computer



When installing new software or software updates, a Readme file is included that contains late breaking news and new information that was not yet included in the documentation. Please open and read this Readme file before contacting Technical Support.

10.2 Forum

In the Native Instruments User Forum you can discuss product features directly with other users and with experts moderating the forum: <http://www.native-instruments.com/forum>.

10.3 Updates

Whenever you encounter problems, it is recommended that you first download and install any available software updates. Updates are released regularly to fix known problems and to continuously improve the software. The version number of your software is displayed in the [About](#) dialog for any Native Instruments application. This dialog can be opened by clicking on the NI logo in the upper right corner of the user interface. Alternatively, you can find the version numbers of all installed Native Instruments applications when showing the details for an application within the [Overview](#) tab of the Service Center. Updates are available on the [Update](#) tab in Service Center or on our website under: <http://www.native-instruments.com/updates>.

11 Troubleshooting and FAQ

This section contains some of the most frequently asked questions and answers along with references to Knowledge Base articles for additional details. In order to find an article, please visit the Native Instruments website, navigate to the Knowledge Base in the Support section and enter the article number in the search field.

11.1 Installation Folder Not Found by an Update Installer

If you have manually moved the location of a Native Instruments application on your hard drive, the installer, upon attempting to run an update, will display an error message and abort the installation. You can correct the application path in Service Center from the [Overview](#) tab. If an application cannot be found, a [Locate](#) button will appear on this tab. Click this button and browse to the actual location of the application.

11.2 User Account Control and Internet Security

User Account Control (UAC) and any installed Internet security or anti virus software should temporarily be disabled for installing the TRAKTOR software, as they may interfere with the installation. If you are concerned about the safety of your files, disconnect your computer from the network during installation.

1. To open the UAC configuration options in Windows 7 or Vista, click on the Start button from the task bar, then enter UAC in the search field and press [Enter]. Disable the check box for User Account Control in Windows Vista, or set the UAC slider all the way to the bottom in Windows 7.
2. Check the Internet security or anti virus software's documentation for instructions on how to temporarily disable their protection services.
3. Once the installation is complete, make sure to re-enable User Account Control and your Internet security / anti virus software.

11.3 Audio Clicks and Drop-outs When Playing Tracks

If you hear clicks and/or drop-outs when a track is playing, you might need to increase the latency setting of your audio interface respectively TRAKTOR KONTROL S4. To learn how to do this, please refer to the manual of your device, which thoroughly describes the Control Panel — the tool that allows you to adjust the audio interface settings. If you hear clicks and/or drop-outs when using a Certified Mixer, read the manual of your device for latency settings and further instructions.

11.4 More Troubleshooting Resources

If none of the suggestions in this chapter covers your problem, the TRAKTOR 2 Manual provides more detailed information on the topics discussed in this Setup Guide. Also check if the Knowledge Base has an answer: <http://www.native-instruments.com/knowledge/>.