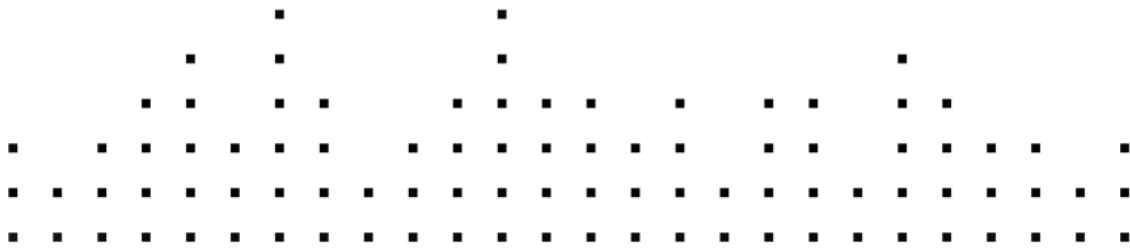




# TRAKTOR KONTROL X1



Setup Guide



The information in this document is subject to change without notice and does not represent a commitment on the part of Native Instruments GmbH. The software described by this document is subject to a License Agreement and may not be copied to other media. No part of this publication may be copied, reproduced or otherwise transmitted or recorded, for any purpose, without prior written permission by Native Instruments GmbH, hereinafter referred to as Native Instruments.

“Native Instruments”, “NI” and associated logos are (registered) trademarks of Native Instruments GmbH.

Mac, Mac OS, GarageBand, Logic, iTunes and iPod are registered trademarks of Apple Inc., registered in the U.S. and other countries.

Windows, Windows Vista and DirectSound are registered trademarks of Microsoft Corporation in the United States and/or other countries.

All other trade marks are the property of their respective owners and use of them does not imply any affiliation with or endorsement by them.

Document authored by: Native Instruments

Document version: 1.1 (07/2011)

Special thanks to the Beta Test Team, who were invaluable not just in tracking down bugs, but in making this a better product.

---

**Germany**

Native Instruments GmbH  
Schlesische Str. 29-30  
D-10997 Berlin  
Germany  
[www.native-instruments.de](http://www.native-instruments.de)

**USA**

Native Instruments North America, Inc.  
6725 Sunset Boulevard  
Los Angeles, CA 90028  
USA  
[www.native-instruments.com](http://www.native-instruments.com)



© Native Instruments GmbH, 2011. All rights reserved.

---

---

# Table of Contents

<b>1</b>	<b>Welcome to TRAKTOR KONTROL X1 .....</b>	<b>5</b>
1.1	What is Included in the Box? .....	5
1.2	About this Setup Guide .....	5
1.3	Caution .....	5
1.4	Notice .....	6
1.4.1	Disposal of the Product .....	6
1.4.2	Specifications Subject to Change .....	6
1.4.3	Disclaimer .....	6
<b>2</b>	<b>Setup Overview .....</b>	<b>7</b>
<b>3</b>	<b>Installing the TRAKTOR KONTROL X1 Software on Mac OS X .....</b>	<b>8</b>
3.1	Installing as Part of TRAKTOR .....	9
3.1.1	Select the Components to Install .....	9
3.1.2	Select the Location .....	11
3.1.3	Complete the Software Installation .....	12
3.2	Installing the TRAKTOR KONTROL X1 Driver Only .....	12
<b>4</b>	<b>Installing the TRAKTOR KONTROL X1 Software on Windows .....</b>	<b>13</b>
4.1	Installing as Part of TRAKTOR .....	13
4.1.1	Confirm the Features to Install .....	16
4.1.2	Confirm the Application Installation Path .....	16
4.1.3	Choose the Hardware Driver .....	18
4.1.4	Complete the Software Installation .....	21
4.2	Installing the TRAKTOR KONTROL X1 Driver Only .....	21
4.3	Connecting the TRAKTOR KONTROL X1 Hardware .....	22
4.3.1	Connecting the TRAKTOR KONTROL X1 on Mac OS X .....	22
4.3.2	Connecting the TRAKTOR KONTROL X1 on Windows .....	22
4.4	Ready to KONTROL .....	22

# 1 Welcome to TRAKTOR KONTROL X1

## 1.1 What is Included in the Box?

The TRAKTOR KONTROL X1 box contains the following:

- The **TRAKTOR KONTROL X1** controller
- A **USB cable**
- The **software installation disc**
- A **Sample Deck overlay**
- This **Setup Guide**

## 1.2 About this Setup Guide

This Setup Guide will help you to install and configure TRAKTOR KONTROL X1 on your computer. If you need further information, please refer to the TRAKTOR KONTROL X1 Reference Manual that will be copied to your computer's hard disk as a PDF file during installation.

On **Windows**, find the manual as a PDF file here:

- *Start > Program Files > Native Instruments > Traktor Kontrol X1 > Documentation*

or

- *C:\Program Files\Native Instruments\Traktor Kontrol X1 Driver\Documentation*

On **Mac OS X**, find the manual as a PDF file here:

- *Applications/Native Instruments/Traktor Kontrol X1 Driver/Documentation*

## 1.3 Caution

It is important you read and understand the following instructions to make sure the TRAKTOR KONTROL X1 controller or any device connected will not be damaged during usage or maintenance:

- Do not open the TRAKTOR KONTROL X1 controller or attempt to disassemble or modify any internal parts. The TRAKTOR KONTROL X1 controller does not contain any user-serviceable parts. If the device appears to be malfunctioning, discontinue use immediately and have the device inspected by qualified service personnel.

- Do not expose the TRAKTOR KONTROL X1 controller to rain, use it near water or in damp or wet conditions.
- Make sure no objects or liquids of any kind penetrate the unit. When cleaning the TRAKTOR KONTROL X1 controller, use a soft, dry cloth. Never use paint thinners, solvents, cleaning fluids, or chemical-infused wiping cloths.
- Never use or store the TRAKTOR KONTROL X1 controller in areas subject to extreme temperatures (e.g., direct exposure to sunlight in an enclosed vehicle or near heat-generating equipment), or high levels of vibration.
- Always let the TRAKTOR KONTROL X1 controller adapt to changed room temperature after it has been stored in a cold environment.
- Do not place the TRAKTOR KONTROL X1 controller in an unstable position where it could accidentally fall.
- Before moving the TRAKTOR KONTROL X1 controller, remove all connected cables.
- Do not use excessive force on buttons, knobs, switches and connectors.
- Do not place heavy objects on top of the TRAKTOR KONTROL X1 controller.

## **1.4 Notice**

### **1.4.1 Disposal of the Product**

Should this product become damaged beyond repair, or if you wish to dispose of it, please observe the regulations of your area and country that relate to the disposal of electronic products.

### **1.4.2 Specifications Subject to Change**

The information contained in this manual is believed to be correct at the time of printing or digital release. However, Native Instruments reserves the right to make changes to the specifications at any time without notice or obligation to update existing units.

### **1.4.3 Disclaimer**

Native Instruments GmbH cannot be held responsible for damage or lost or destroyed data caused by improper use or modification of TRAKTOR KONTROL X1.

---

## 2 Setup Overview

This section provides a quick overview of the various steps required to get your TRAKTOR KONTROL X1 system up and running: **installation**, **activation**, **updates**, and **configuration**, all of which will be described in greater detail in further chapters of this guide.

- **Software installation:** Insert the installation disc, locate the setup file and double-click it in order to start the installation procedure. Carefully read and follow the on-screen instructions, accept the License Agreements, and enter the password for your computer if prompted (Mac OS X only).
- **Hardware installation:** Attach the TRAKTOR KONTROL X1 controller to your computer, as explained later in this document.
- **Activation:** Activate your TRAKTOR software using the Service Center application. Online and Offline activation methods are available. For more information about the activation procedure, please refer to the TRAKTOR 2 Reference Manual that will be copied to your computer's hard disk as a PDF file during installation. Regardless of the TRAKTOR software activation process, you can independently use the TRAKTOR KONTROL X1 as a MIDI Controller.
- **Update:** Download the latest software updates using the Service Center application. Then browse to the download folder and install all downloaded updates.
- Suggestions for further reading, as well as tips for troubleshooting and FAQs, can be found in the subsequent chapters of this guide.

## 3 Installing the TRAKTOR KONTROL X1 Software on Mac OS X

This chapter will guide you through the TRAKTOR KONTROL X1 installation procedure. Before starting the TRAKTOR KONTROL X1 installation process, here are some points to be aware of:

- Please carefully review the installer screens and the suggested installation paths in order to avoid that any unwanted folders are created on your hard disk.
- Moving installation folders related to Native Instruments software **after installation** is not recommended. Future software updates rely on the directory locations set during initial installation.

### Installing the TRAKTOR KONTROL X1 Software

TRAKTOR KONTROL X1 software installation includes installation of the Controller Editor, the Service Center, the TRAKTOR PRO 2 software and the TRAKTOR KONTROL X1 driver.



For more information about the Controller Editor, refer to the Controller Editor manual that will be copied to your computer's hard disk as a PDF file during installation.

The following sections detail the installation of the TRAKTOR KONTROL X1's software on Windows and Mac OS X. There are two ways to install the TRAKTOR KONTROL X1 software:

- As part of TRAKTOR 2 (all versions) software installation
- or
- TRAKTOR KONTROL X1 stand alone software installation



Do not connect the TRAKTOR KONTROL X1 hardware until the driver installation is complete!



You cannot install the TRAKTOR KONTROL X1 on a USB 1.1 port — a USB 2.0 port is required.



Please always refer to the Readme file on the installation DVD, as it contains last minute information that may not be available in this Setup Guide.



## 3.1 Installing as Part of TRAKTOR

The TRAKTOR KONTROL X1 driver, the Controller Editor and the Service Center application are installed during the TRAKTOR PRO 2 installation.

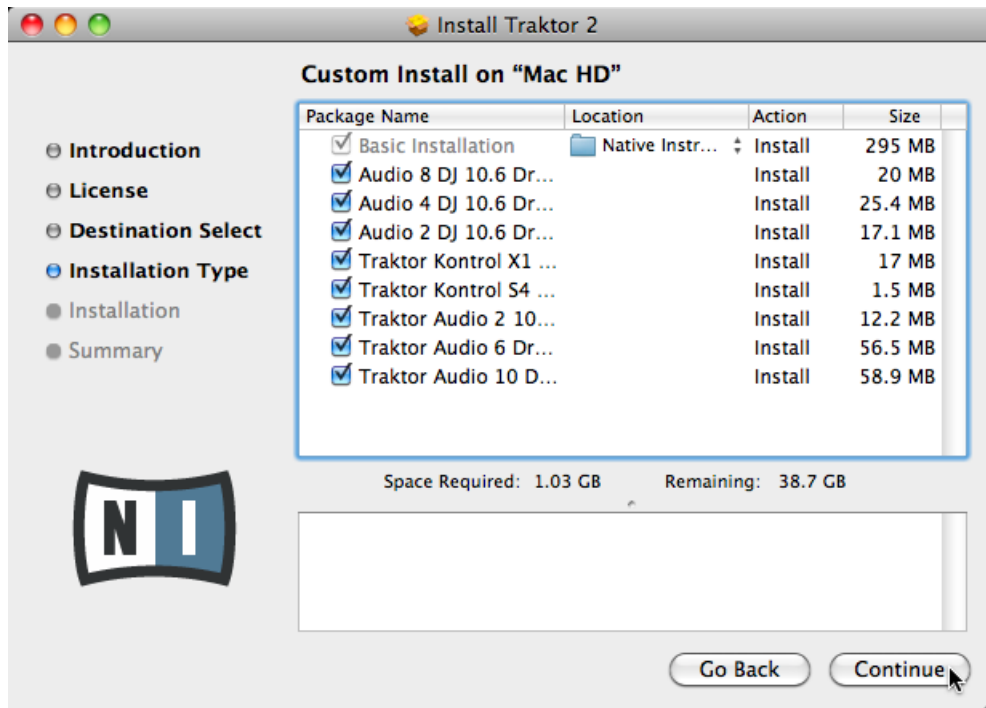
The following sections detail how to install the TRAKTOR KONTROL X1 driver and the Controller Editor application as part of the TRAKTOR installation.

1. Place the installation DVD in your computer's DVD-ROM drive. Its icon will appear in the Mac OS X Finder.
2. Double-click the TRAKTOR DVD icon to display the content of the DVD.
3. Double-click the installer file named **Traktor 2 Mac.mpkg**.
4. Follow the on-screen instructions.

### 3.1.1 Select the Components to Install

- ▶ After you have accepted the software license agreement, click [Continue](#) to proceed.

→ The installer window displays the components available for installation.



It is recommended to keep all features selected unless you have a specific reason to deselect a feature (such as if this feature is already installed on your computer).

**Basic Installation:** This installs the dedicated software for your TRAKTOR KONTROL X1 controller, along with its documentation. This component cannot be deselected. It also includes the installation of the Service Center (which is required for software activation) and the Controller Editor (which allows you to configure the MIDI assignments of your TRAKTOR KONTROL X1 controller for use as a MIDI controller with applications other than the included software).

**Audio 2/4/8 DJ Drivers:** This installs drivers for the AUDIO 2 DJ, AUDIO 4 DJ and AUDIO 8 DJ audio interfaces by Native Instruments. If you do not intend to use any of these audio interfaces, you can deactivate the checkboxes.

**Traktor Kontrol X1:** This installs the driver for the TRAKTOR KONTROL X1 controller. This checkbox has to be activated in order to use your X1 properly.

**Traktor Kontrol S4:** This installs the driver for the TRAKTOR KONTROL S4 controller. If you do not intend to use this controller, you can deactivate this checkbox.

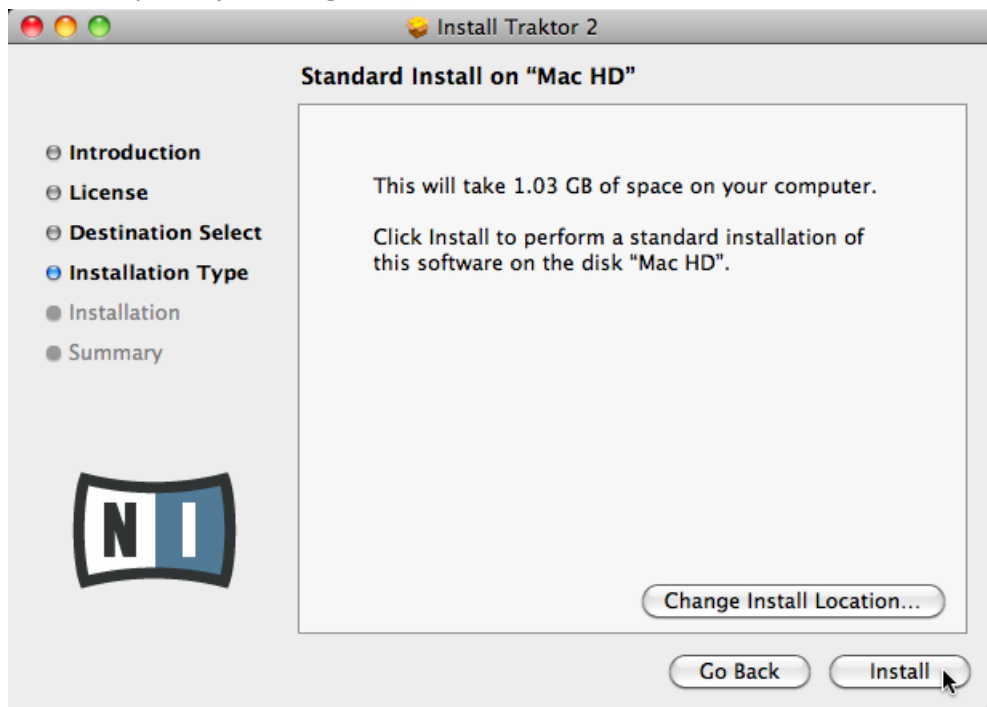
**Traktor Audio 2/6/10:** This installs drivers for the TRAKTOR AUDIO 2, TRAKTOR AUDIO 6 and TRAKTOR AUDIO 10 audio interfaces by Native Instruments. If you do not intend to use any of these audio interfaces, you can deactivate the checkboxes.



It is strongly recommended to install the TRAKTOR KONTROL X1 software to the default location. If you still need to change the install location, click on the folder icon in the [Location](#) column and select the desired folder.

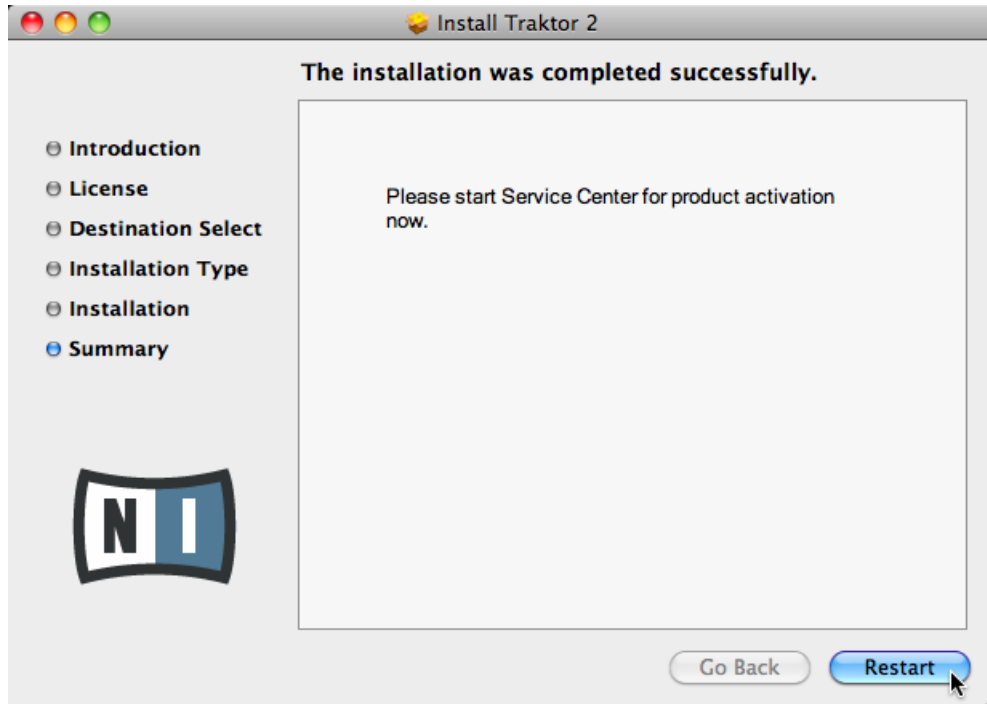
### 3.1.2 Select the Location

► Click [Install](#) to install the software in the default path, or browse to select a custom installation path by clicking [Change Install Location...](#) Then click [Install](#).



### 3.1.3 Complete the Software Installation

► Once the installer is finished, you will be greeted with this screen. Click [Restart](#) to exit the installer and restart your Mac. TRAKTOR PRO 2 and TRAKTOR KONTROL X1 software installation is now complete.



## 3.2 Installing the TRAKTOR KONTROL X1 Driver Only

In case you have the TRAKTOR 2 software already installed on your computer, the following section provides information on how to install the TRAKTOR KONTROL X1 driver without the TRAKTOR PRO 2 software. Also included in the installer is the Controller Editor application and the Service Center.



For more information about the Controller Editor, refer to the Controller Editor manual that will be copied to your computer's hard disk as a PDF file during installation.

## 4 Installing the TRAKTOR KONTROL X1 Software on Windows

This chapter will guide you through the TRAKTOR KONTROL X1 installation procedure. Before starting the TRAKTOR KONTROL X1 installation process, here are some points to be aware of:

- Please carefully review the installer screens and the suggested installation paths in order to avoid that any unwanted folders are created on your hard disk.
- Moving installation folders related to Native Instruments software **after installation** is not recommended. Future software updates rely on the directory locations set during initial installation.

### Installing the TRAKTOR KONTROL X1 Software

TRAKTOR KONTROL X1 software installation includes installation of the Controller Editor, the Service Center, the TRAKTOR PRO 2 software and the TRAKTOR KONTROL X1 driver.



For more information about the Controller Editor, refer to the Controller Editor manual that will be copied to your computer's hard disk as a PDF file during installation.

The following sections detail the installation of the TRAKTOR KONTROL X1's software on Windows and Mac OS X. There are two ways to install the TRAKTOR KONTROL X1 software:

- As part of TRAKTOR 2 (all versions) software installation
- or
- TRAKTOR KONTROL X1 stand alone software installation



Do not connect the TRAKTOR KONTROL X1 hardware until the driver installation is complete!



You cannot install the TRAKTOR KONTROL X1 on a USB 1.1 port — a USB 2.0 port is required.

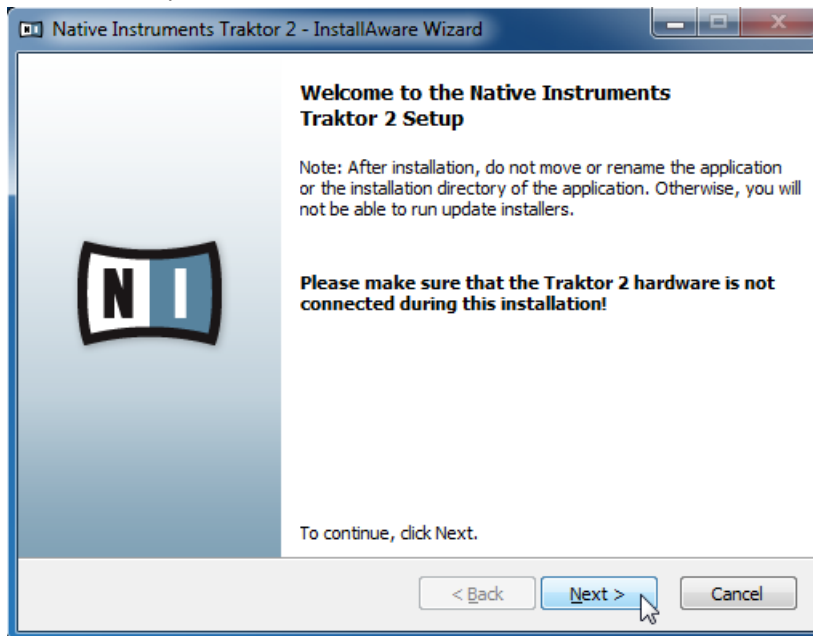
Please always refer to the Readme file on the installation DVD, as it contains last minute information that may not be available in this Setup Guide.

### 4.1 Installing as Part of TRAKTOR

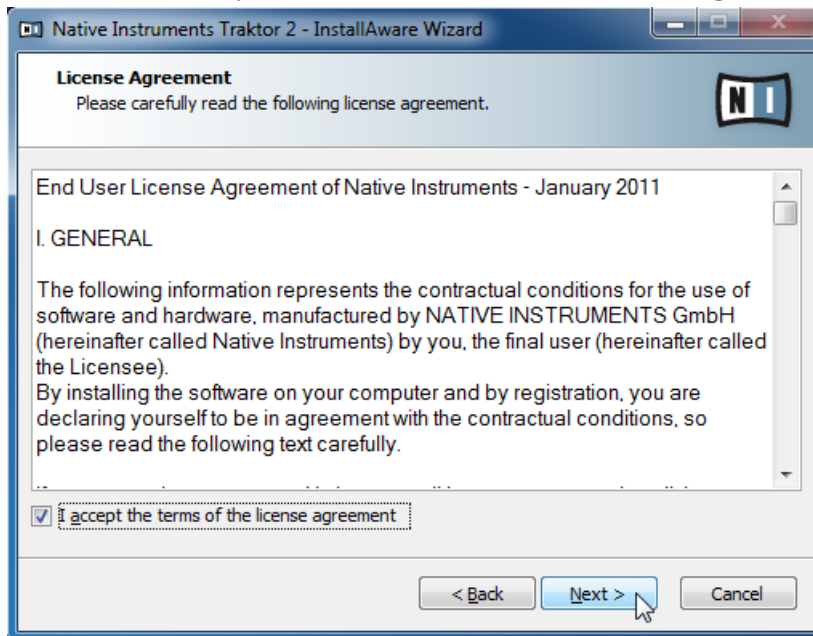
The TRAKTOR KONTROL X1 driver, the Controller Editor and the Service Center application are installed during the TRAKTOR PRO 2 installation.

The following sections detail how to install the TRAKTOR KONTROL X1 driver and the Controller Editor application as part of the TRAKTOR installation.

1. Place the installation DVD in your computer's DVD-ROM drive.
2. Use the Windows Explorer to browse the content of the DVD.
3. Double-click the installer file named **Traktor 2 PC.exe**.
4. Click [Next](#) to proceed.

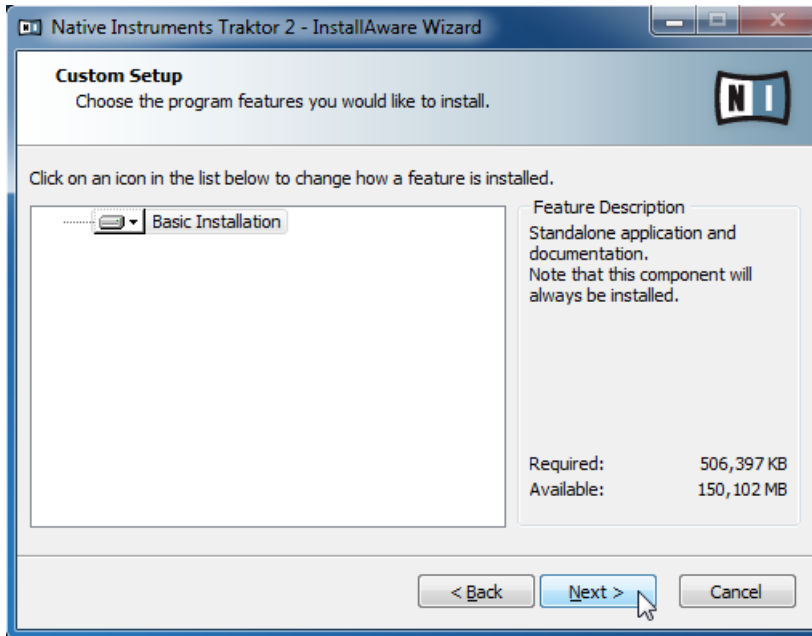


5. To continue, accept the terms of the software license agreement and click [Next](#).



### 4.1.1 Confirm the Features to Install

► Now choose the features you would like to install and click [Next](#) to proceed.



**Basic Installation:** This installs the dedicated software for your TRAKTOR KONTROL X1 controller, along with its documentation. This component cannot be deselected. It also includes the installation of the Service Center (which is required for software activation) and the Controller Editor (which allows you to configure the MIDI assignments of your TRAKTOR KONTROL X1 controller for use as a MIDI controller with applications other than the included software).

### 4.1.2 Confirm the Application Installation Path

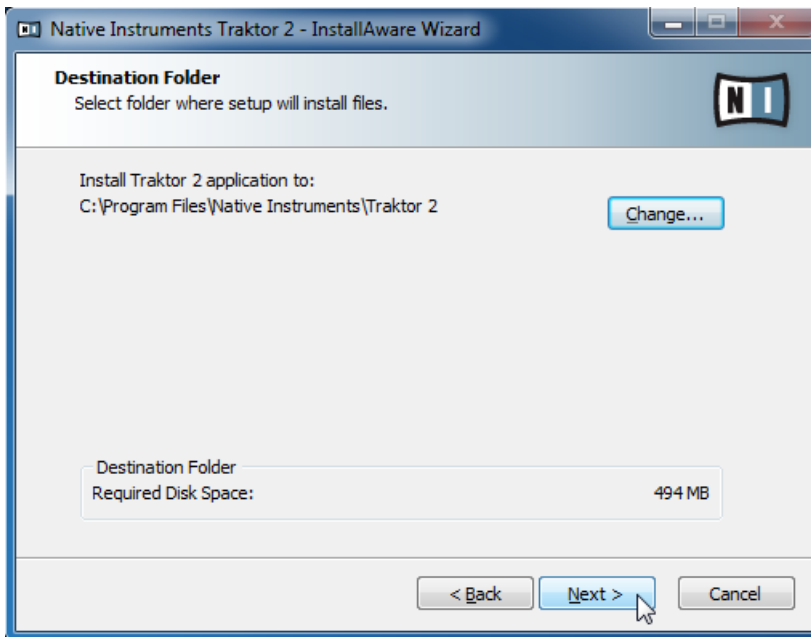
You will be asked to select and confirm an installation path for the TRAKTOR 2 software.



It is strongly recommended to install the TRAKTOR KONTROL X1 software to the default location. If you still need to change the install location, click [Change...](#) to open a Folder Selection dialog and select the desired destination folder.



► Click **Next** to proceed.



### 4.1.3 Choose the Hardware Driver

1. Choose here which Native Instruments audio interface drivers you would like to install. Check the appropriate checkboxes for your hardware, then click [Next](#) to proceed.



2. If you intend to use one of the following Native Instruments audio interfaces, check the appropriate checkboxes, then click [Next](#) to proceed.



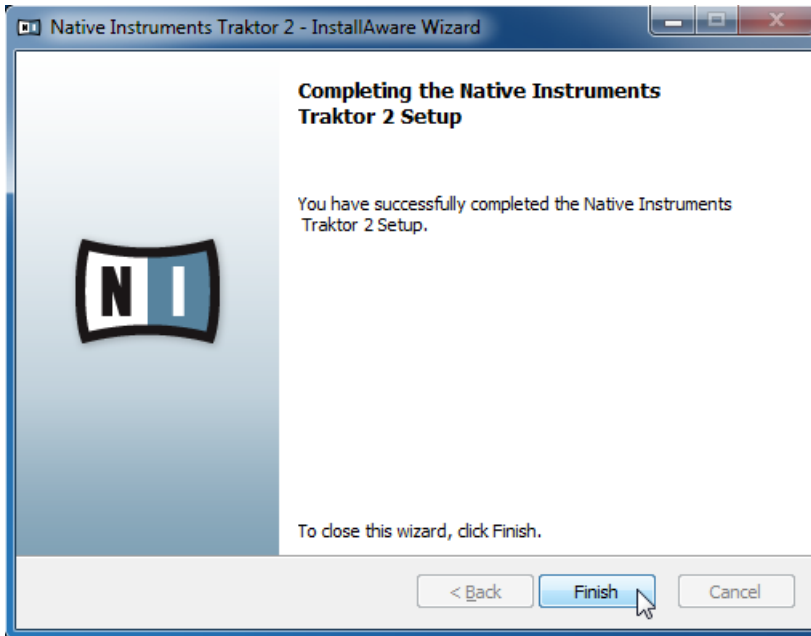
3. Check the TRAKTOR KONTROL X1 checkbox to install the TRAKTOR KONTROL X1 driver as part of the TRAKTOR installation, then click [Next](#) to proceed.



4. Follow the on-screen instructions.

#### 4.1.4 Complete the Software Installation

- ▶ Click **Finish** to complete the software installation.



- ▶ Please activate your TRAKTOR PRO 2 software using Service Center now.



For more information about the activation procedure, please refer to the TRAKTOR 2 Setup Guide that will be copied to your computer's hard disk as a PDF file during installation.

## 4.2 Installing the TRAKTOR KONTROL X1 Driver Only

In case you have the TRAKTOR 2 software already installed on your computer, the following section provides information on how to install the TRAKTOR KONTROL X1 driver without the TRAKTOR PRO 2 software. Also included in the installer is the Controller Editor application and the Service Center.



For more information about the Controller Editor, refer to the Controller Editor manual that will be copied to your computer's hard disk as a PDF file during installation.

## 4.3 Connecting the TRAKTOR KONTROL X1 Hardware

Once software installation is complete, connect the TRAKTOR KONTROL X1 via the supplied USB cable to an available USB 2.0 (or later) port on your computer.



Do not connect the TRAKTOR KONTROL X1 hardware until the driver installation is complete.

### 4.3.1 Connecting the TRAKTOR KONTROL X1 on Mac OS X

Once the TRAKTOR KONTROL X1 software installation is complete and the TRAKTOR KONTROL X1 is connected to a USB 2.0 (or later) port on your computer, no further steps are necessary.



You cannot install the TRAKTOR KONTROL X1 on a USB 1.1 port — a USB 2.0 port is required.



USB hubs may also be used, however Native Instruments cannot guarantee compatibility with all USB hubs currently available on the market.

### 4.3.2 Connecting the TRAKTOR KONTROL X1 on Windows

When connecting the TRAKTOR KONTROL X1 to a USB 2.0 port on your computer for the first time, Windows will identify the TRAKTOR KONTROL X1 and start the final installation process.



You cannot install the TRAKTOR KONTROL X1 on a USB 1.1 port — a USB 2.0 port is required.



USB hubs may also be used, however Native Instruments cannot guarantee compatibility with all USB hubs currently available on the market.

## 4.4 Ready to KONTROL

► The TRAKTOR KONTROL X1 was designed as a ‘plug and play’ device. Once the supporting software is installed no other configuration is necessary. Open TRAKTOR and you are ready to mix!



'Plug and play' functionality is available only for TRAKTOR version 1.2.3 and later. Sample Deck control is available only for TRAKTOR version 2.0.3 and later. For more information, please refer to the TRAKTOR KONTROL X1 Reference Manual.